



SPECIAL MEETING AGENDA

Tuesday, May 12, 2020

335 West Colorado Ave, Telluride Colorado (WEST WING) Audio and Video
Telluride, Colorado

1. **12:45 PM CALL TO ORDER - ZOOM Special Daily Meeting - Zoom.us - Join a Meeting, Meeting Id # 534.180.495, Password 014764, audio 1-301-715-8592 or 1-253-215-878**
2. **ADMINISTRATIVE MATTERS**
 - a. Discussion and update with the San Miguel County Stakeholders and Commissioners on the virus outbreak.
 - b. Re-visit the current Public Health Orders specifically employees/companies living/working outside the county to evaluate opening to additional phases.
Grace Franklin, Public Health Director
 - c. Presentation of the Data Summary prepared for the data site.
Grace Franklin, Public Health Director and Heather Widlund, GIS
 - d. Other, as needed.
3. **ADJOURNMENT**

NOTE: This agenda is subject to change, including the addition of items up to 24 hours in advance or the deletion of items at any time. All times are approximate. The County Manager reports may include administrative items not listed. Regular Meetings, Public Hearings, and Special Meetings are recorded, and ACTION MAY BE TAKEN ON ANY ITEM. Formal Action cannot be taken at Work Sessions. For further information, contact the County Administration office at 970-728-3174. If special accommodations are necessary per ADA, contact 970-728-3174 prior to the meeting.

The official, designated posting place for all BOCC notices will be online at <https://www.sanmiguelcountyco.gov/liveagenda>. Use this link to view the live agenda with any last-minute changes. To be automatically notified, please sign up at www.sanmiguelcountyco.gov, sign up for alerts, and follow the prompts.



AGENDA ITEM - 2.a.

TITLE:

Discussion and update with the San Miguel County Stakeholders and Commissioners on the virus outbreak.

Presented by:

Time needed:

PREPARED BY:

RECOMMENDED ACTION/MOTION:

INTRODUCTION/BACKGROUND:

FISCAL IMPACT:

Contract Number:	Date Executed	End Date	Department(s)
YYYY-###			Board of County Commissioner Staff
Description:			



AGENDA ITEM - 2.b.

TITLE:

Re-visit the current Public Health Orders specifically employees/companies living/working outside the county to evaluate opening to additional phases.

Presented by: Grace Franklin, Public Health Director

Time needed:

PREPARED BY:

RECOMMENDED ACTION/MOTION:

INTRODUCTION/BACKGROUND:

FISCAL IMPACT:

Contract Number:	Date Executed	End Date	Department(s)
YYYY-###			Board of County Commissioner Staff
Description:			

ATTACHMENTS:

Description
Power Point Presentation

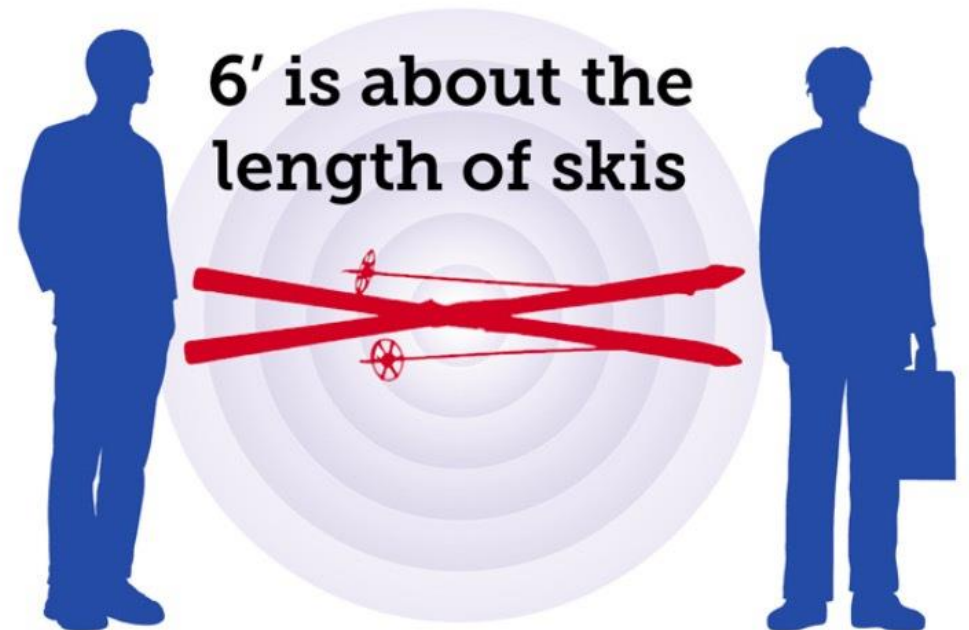
Upload Date
5/12/2020

Phase Forward San Miguel County

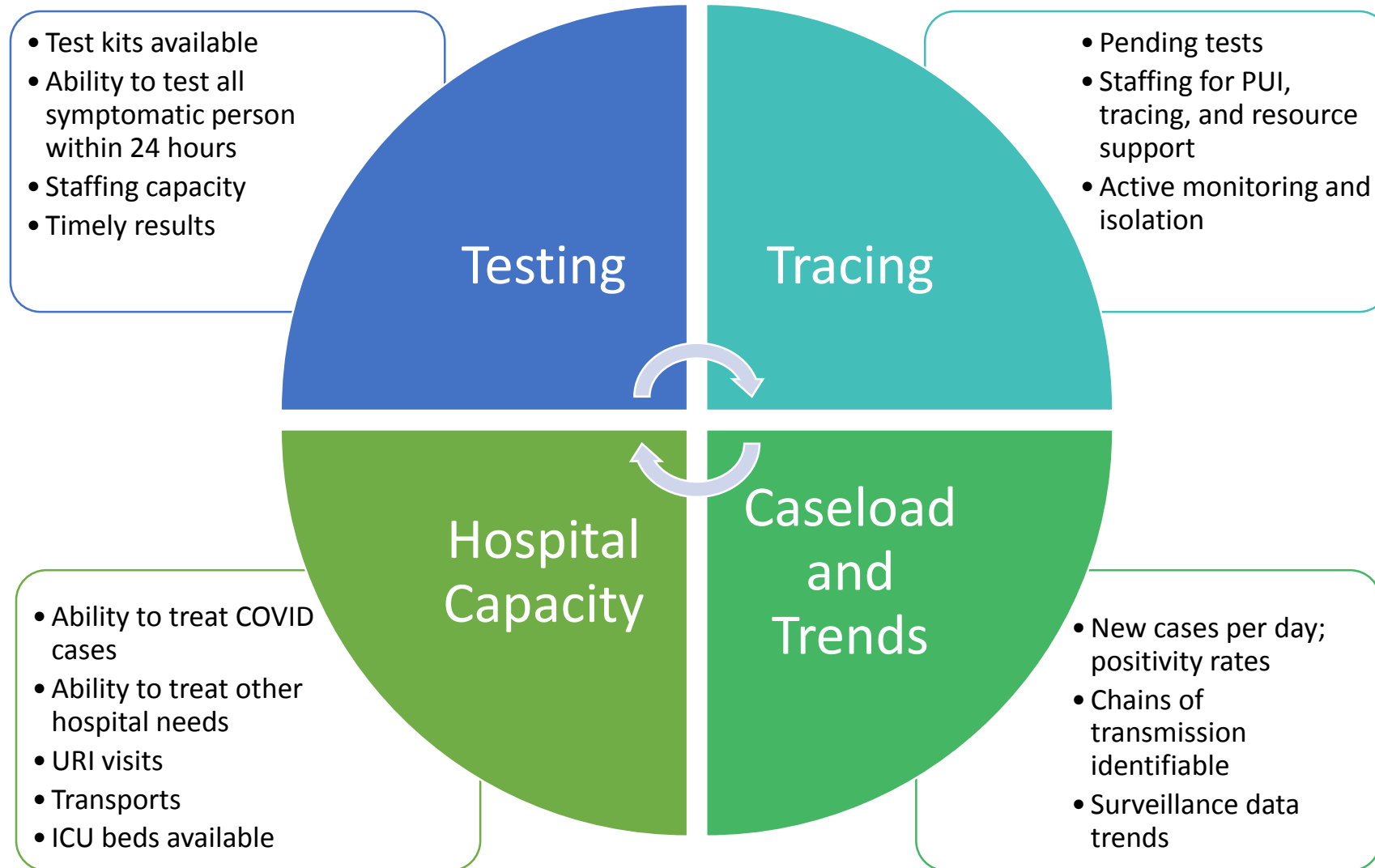


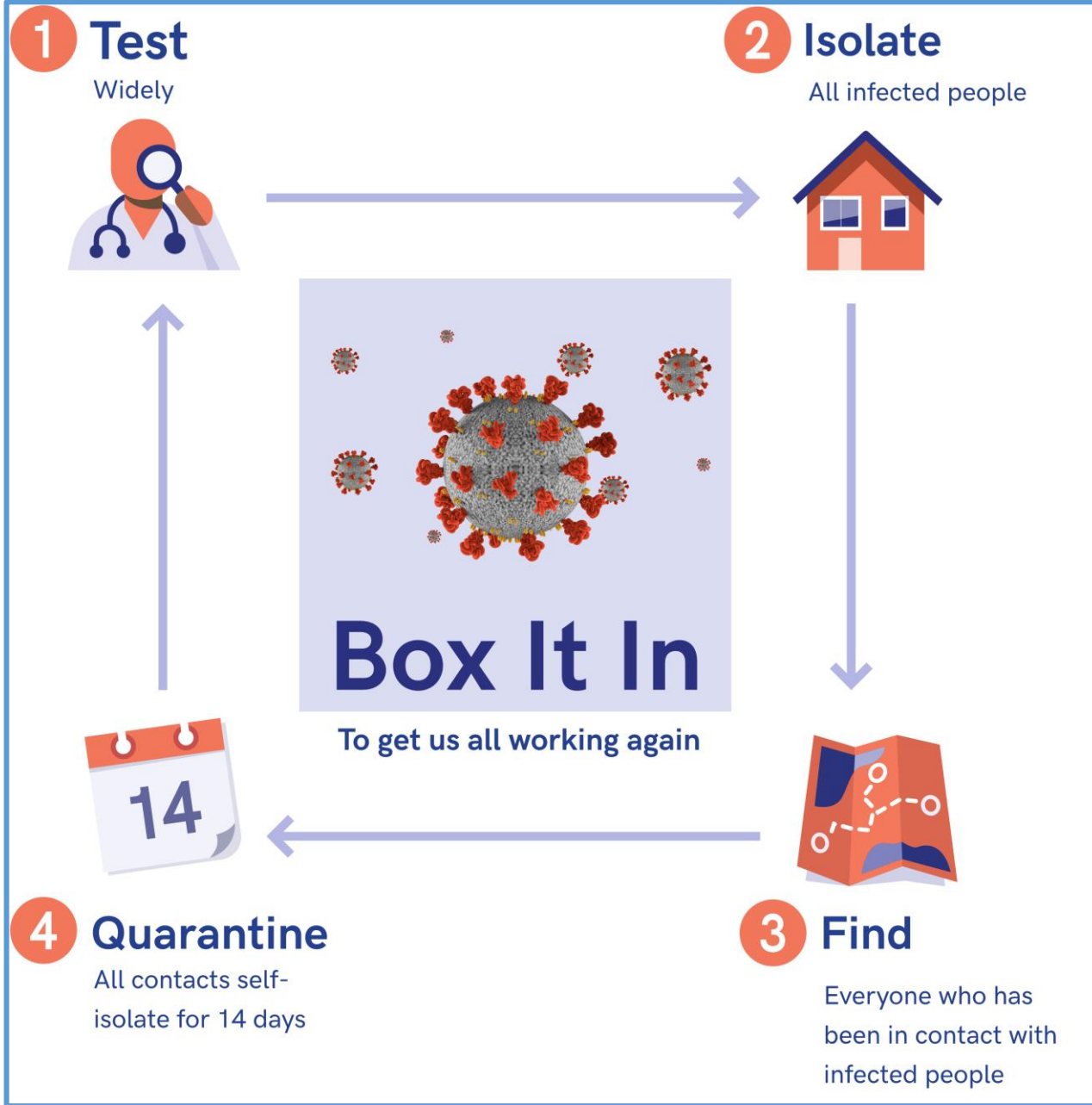
COVID Commitments

1. Wear a mask in public
2. No large gatherings (<10 people)
3. 6 feet distance
4. Good hygiene
 - Don't touch face
 - Wash hands often
5. Stay home when sick



Indicators to move through phases





PCR Tests
PCR tests are the nasal swab and saliva tests performed at the local medical clinics. A positive PCR test shows active COVID-19 infection. (Inconclusive results are not reported.) Updated daily.

PCR Test

Positive
22

PCR Test

Negative
317

PCR Test

Total Tests
355

PCR Test

Pending
11

Blood Antibody Tests
These tests are the community-wide blood tests performed in March and April. A positive IgG antibody test shows COVID-19 exposure and presumed immunity. It does not test for active infection. For more information, [click here](#). Final update 5/4/20

Blood Antibody Test

Positive
29

Blood Antibody Test

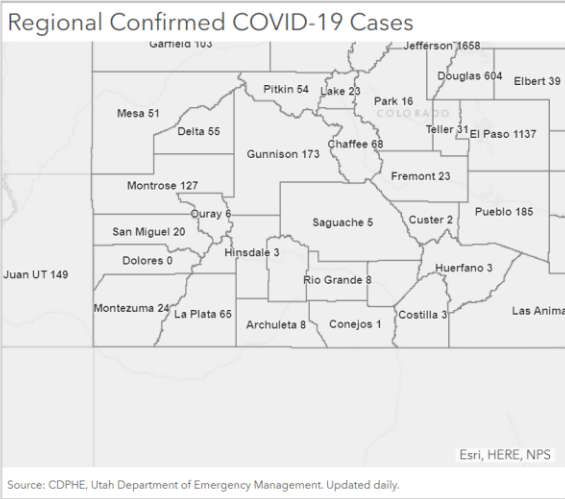
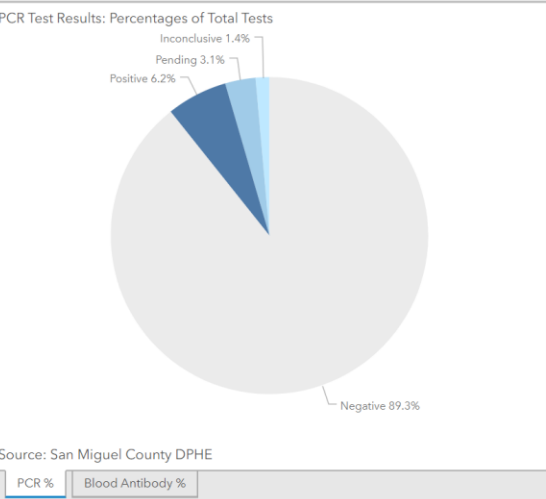
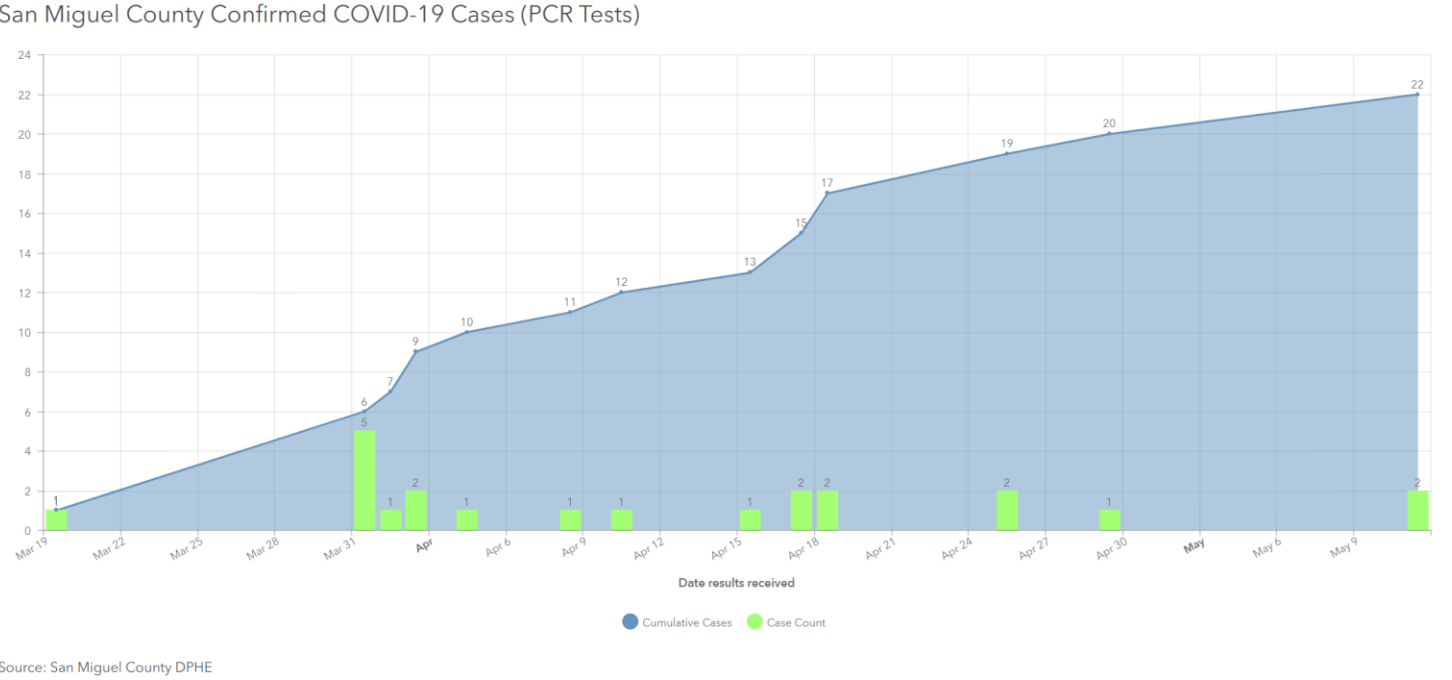
Borderline
79

Blood Antibody Test

Negative
5,347

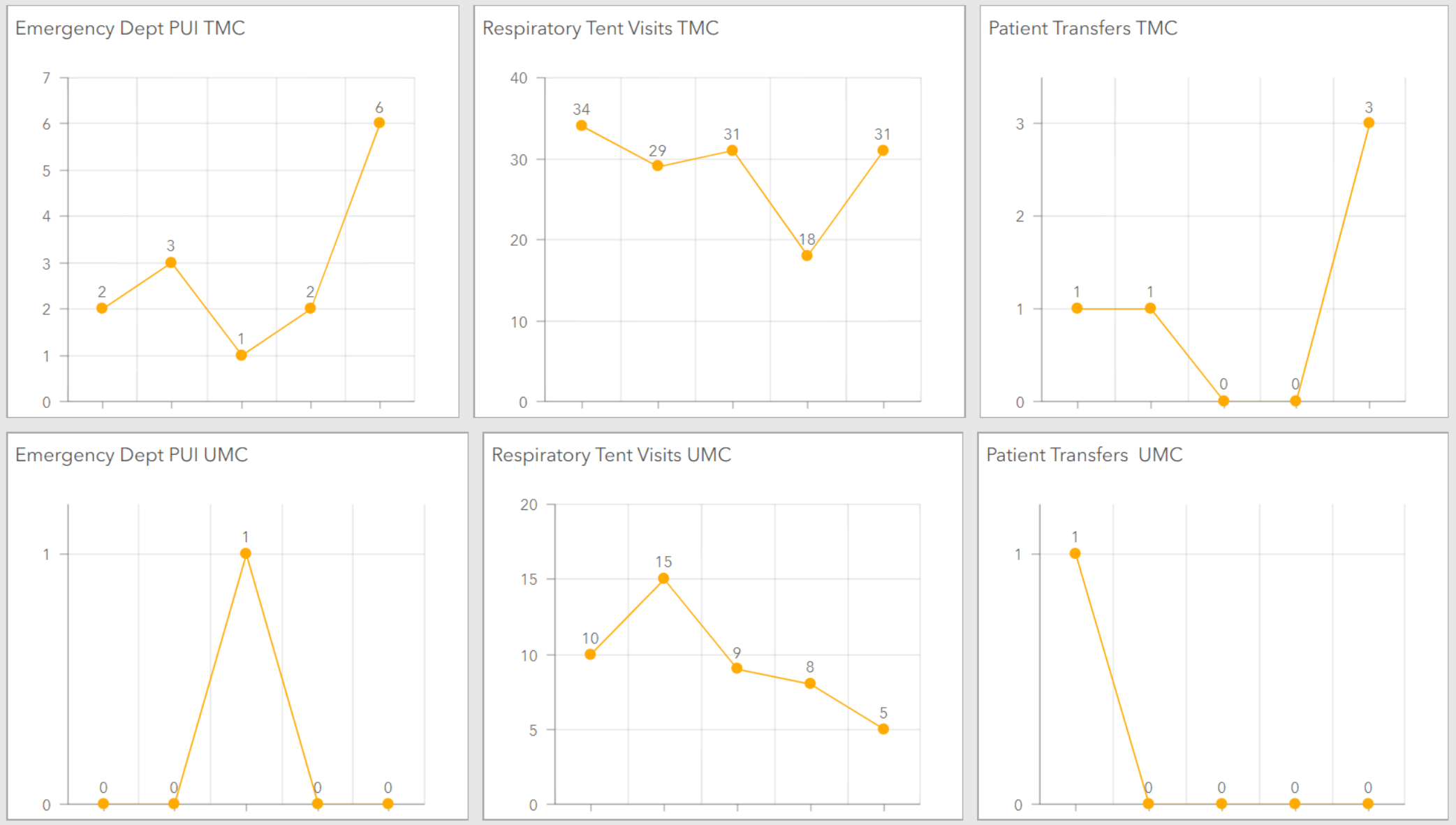
Blood Antibody Test

Total Tests
5,455



San Miguel County COVID-19 Information and News
<https://www.sanmiguelcountyco.gov/590/Coronavirus>
State of Colorado COVID-19 Data
<https://covid19.colorado.gov/case-data>

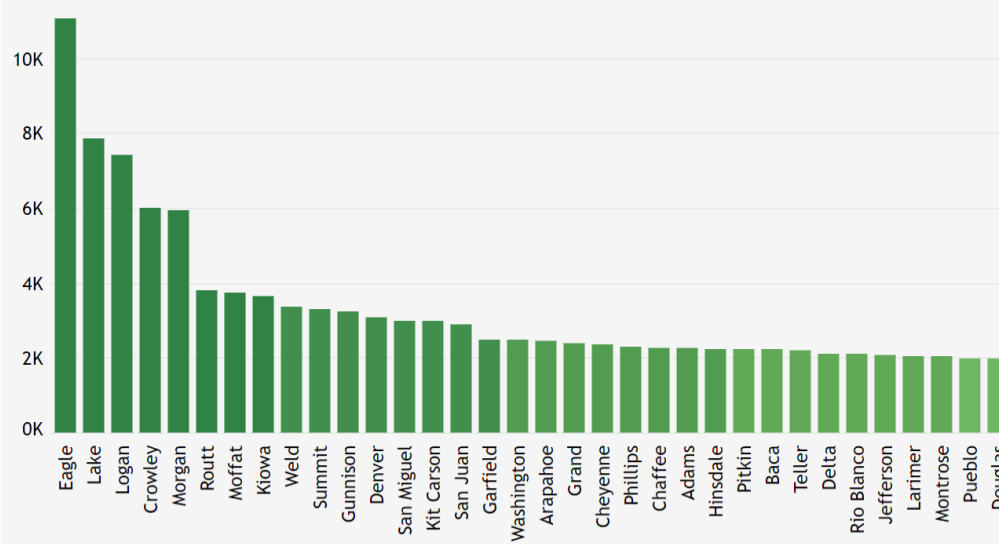
Clinic Data



A map of Colorado showing its 64 counties, each labeled with its name and population. The counties are color-coded in various shades of green. The population data is as follows:

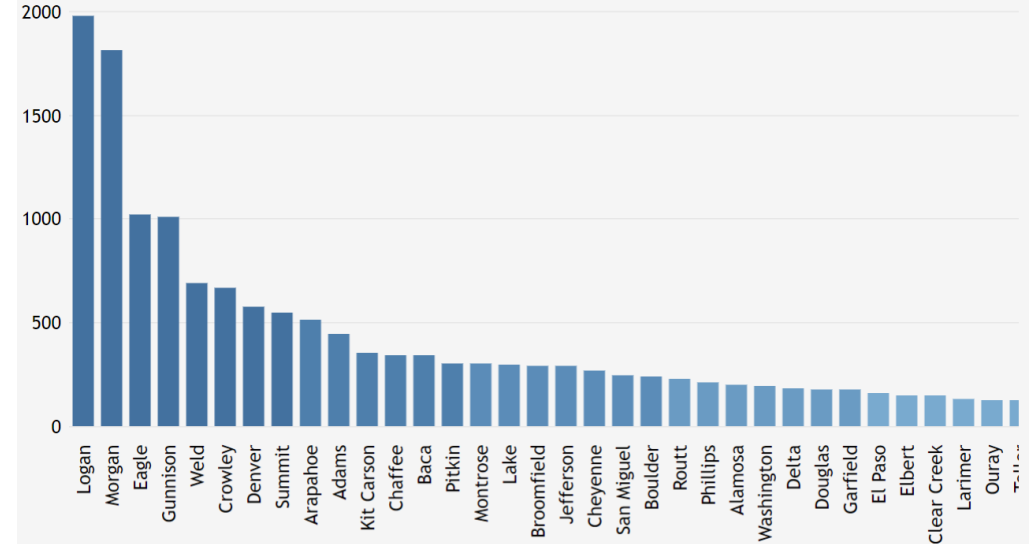
County	Population
Adams	2246.65
Alamosa	1847.50
Arapahoe	2440.19
Archuleta	888.11
Baca	2227.23
Bent	1099.85
Boulder	1829.61
Broomfield	1848.73
Chaffee	2251.85
Clear Creek	583.36
Clear Fork	3299.65
Crowley	6009.90
Custer	811.69
Delta	2114.04
Douglas	1966.50
Dolores	340.96
El Paso	1931.70
Elbert	1537.11
Essex	3069.81
Fremont	1145.85
Garfield	2479.64
Gunnison	3220.17
Huerfano	1094.25
Jefferson	2074.06
Kit Carson	2976.11
Kiowa	3641.66
Larimer	2040.18
Las Animas	862.60
La Plata	664.86
Lincoln	1450.57
Lake	7845.92
Lake Fork	1454.98
Logan	7408.25
Montezuma	1349.44
Montrose	2023.19
Morgan	5925.69
Mesa	1350.00
Moffat	3740.23
Mineral	1801.80
Ouray	1917.47
Park	1454.98
Pueblo	1978.27
Phillips	2297.23
Pitkin	2231.67
Prowers	1531.71
Rio Blanco	2093.58
Rio Grande	1247.10
Saguache	804.45
San Juan	2887.14
San Miguel	2983.98
Sedgwick	1670.33
Summit	3299.65
Teller	2198.72
Washington	2474.10
Weld	3372.15
Yuma	1655.20

Total Testing Rate Per 100,000 People in Colorado by County



A map of Colorado showing its 64 counties. Each county is labeled with its name and population. The counties are color-coded: light blue for populations under 100,000; medium blue for populations between 100,000 and 250,000; dark blue for populations between 250,000 and 500,000; and light tan for populations over 500,000. The counties and their populations are: Moffat (45,52), Jackson (129,01), Larimer (129,01), Weld (687,03), Logan (197,75), Sedgwick (210,97), Routt (225,83), Grand (32,31), Boulder (238,83), Morgan (1813,84), Washington (190,32), Yuma (109,68), Rio Blanco (*), Garfield (172,22), Eagle (1018,90), Summit (545,64), Clear Creek (144,88), Gilpin (287,96), Denver (573,70), Adams (445,38), Arapahoe (508,64), Jefferson (286,11), Douglas (176,17), Elbert (148,75), Lincoln (*), Kit Carson (349,31), Mesa (33,20), Delta (177,79), Pitkin (302,03), Lake (296,32), Park (86,22), Teller (123,70), El Paso (159,16), Cheyenne (268,53), Montrose (300,52), Ouray (125,05), San Miguel (244,59), San Juan (*), Hinsdale (*), Mineral (*), Chaffee (339,52), Gunnison (1007,40), Fremont (48,00), Custer (*), Pueblo (110,70), Crowley (665,87), Otero (54,45), Bent (*), Prowers (74,52), Dolores (*), Montezuma (91,75), La Plata (115,24), Archuleta (58,24), Rio Grande (71,26), Alamosa (197,73), Huerfano (*), Costilla (*), Las Animas (*), and Baca (338,31).

Case Rates Per 100,000 People in Colorado by County



Colorado Orders

Through May 26

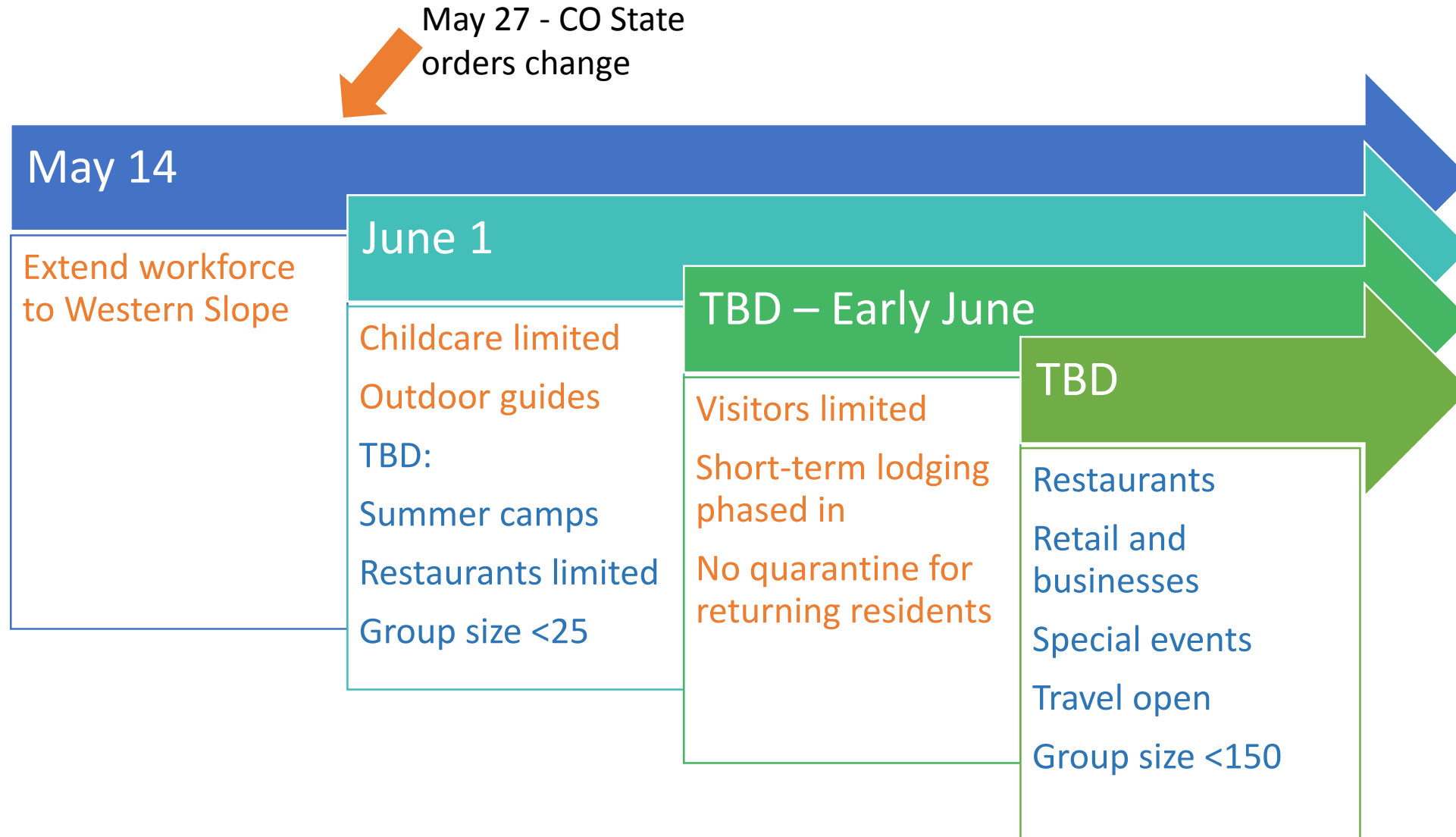
- Less than 10 people gathering
- Masks should be worn in public
- Travel limited to in county or 10 miles from home (recreation and non-essential travel)
- Closed: gyms, K-12, theatres
- Food establishments: Takeout or delivery only
- Business with strict precautions: employees must wear masks

San Miguel County Orders

Through May 31

- Non-critical business: SMC residents only (workers and patrons)
- No childcare
- No visitors
- No short-term lodging
- Quarantine residents and non-residents returning

Projected phases



**Guidelines and dates subject to change



AGENDA ITEM - 2.c.

TITLE:

Presentation of the Data Summary prepared for the data site.

Presented by: Grace Franklin, Public Health Director and Heather Widlund, GIS

Time needed:

PREPARED BY:

RECOMMENDED ACTION/MOTION:

INTRODUCTION/BACKGROUND:

FISCAL IMPACT:

Contract Number:	Date Executed	End Date	Department(s)
YYYY-###			Board of County Commissioner Staff
Description:			

ATTACHMENTS:

Description

Power Point Presentation

Upload Date

5/12/2020

San Miguel County, CO

IgG Antibody Tests

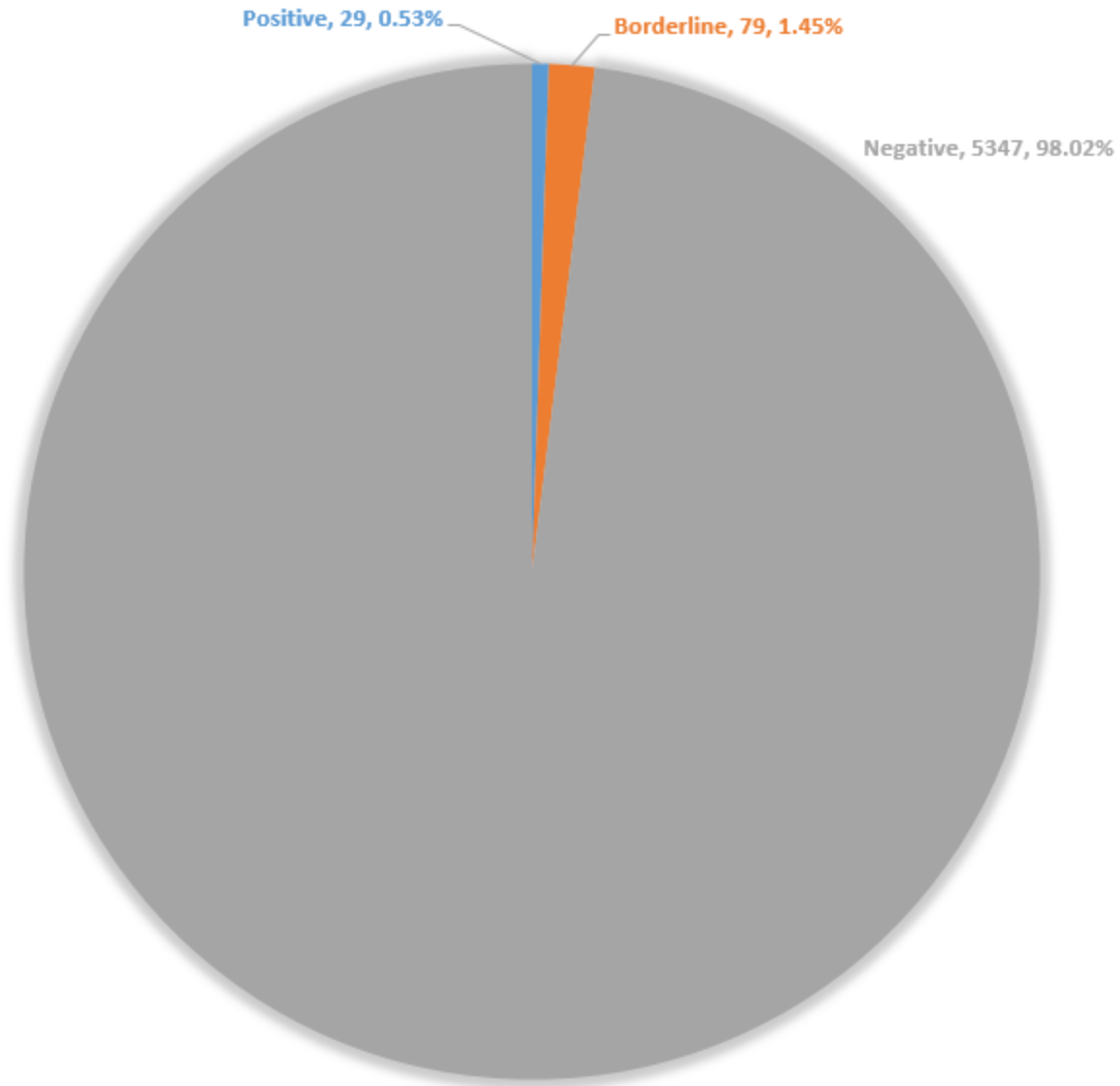
Statistics and Demographics

IgG antibody tests for SARS CoV-2 were performed county-wide in March and April of 2020.

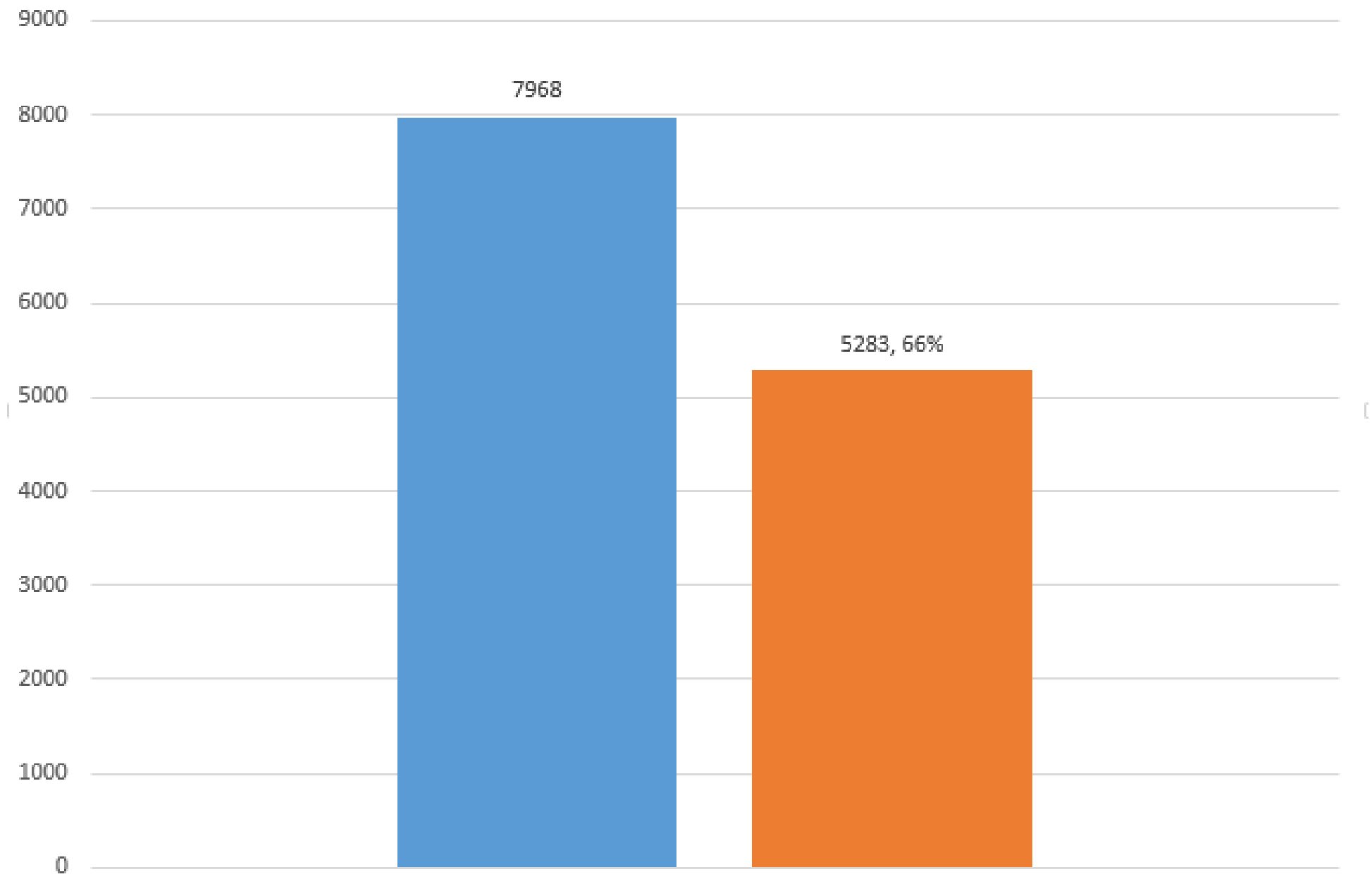
DISCLAIMER

Data are presented for information only and have not been subject to analysis or interpretation.

PERCENTAGE OF IGG TOTAL TEST RESULTS (5455)

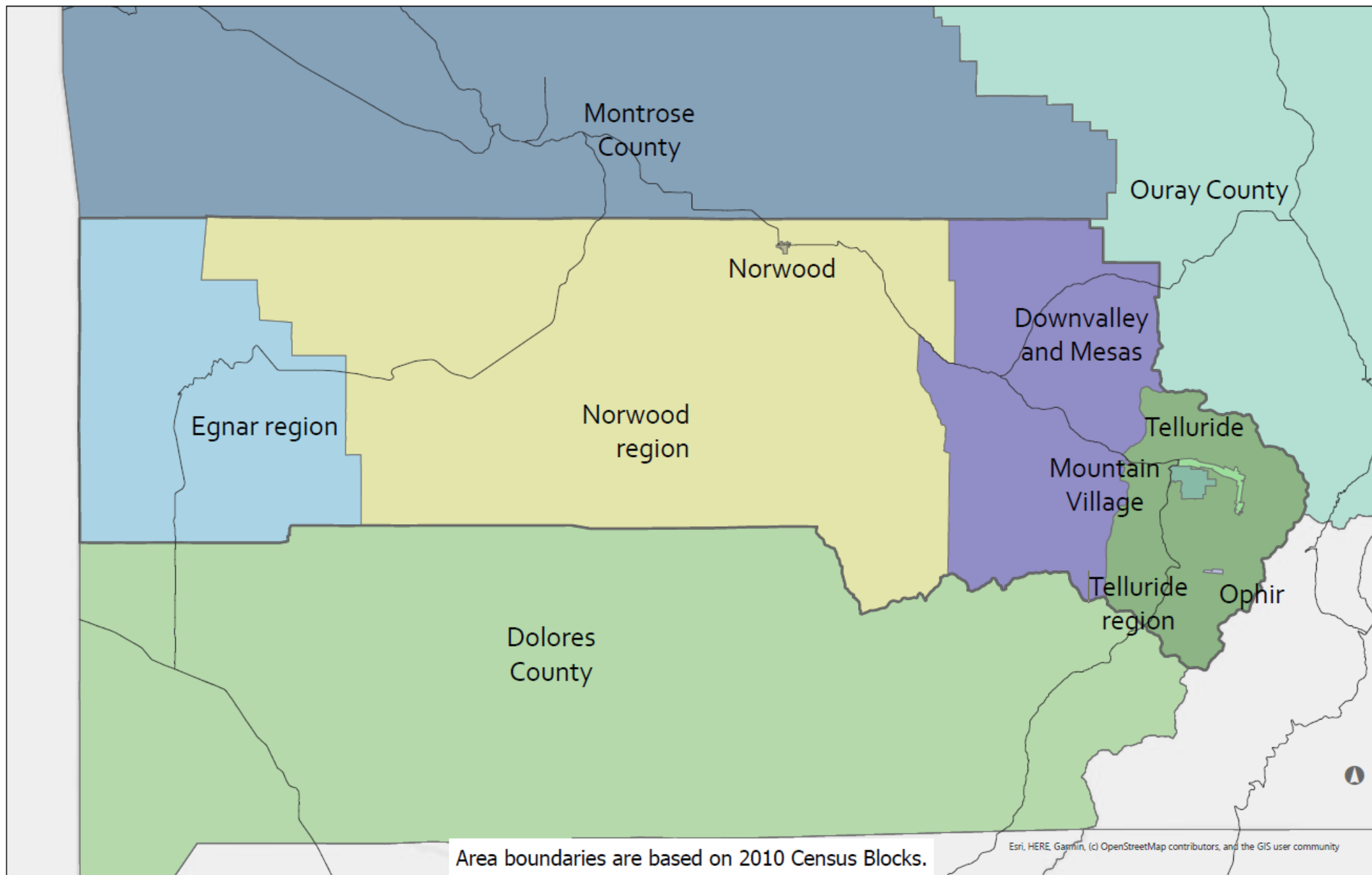


County Total Population (ACS2018) vs County Residents Tested



LOCATION

*NOTE: 13.6% of negative results were not mappable based on the address provided, or no address was provided.



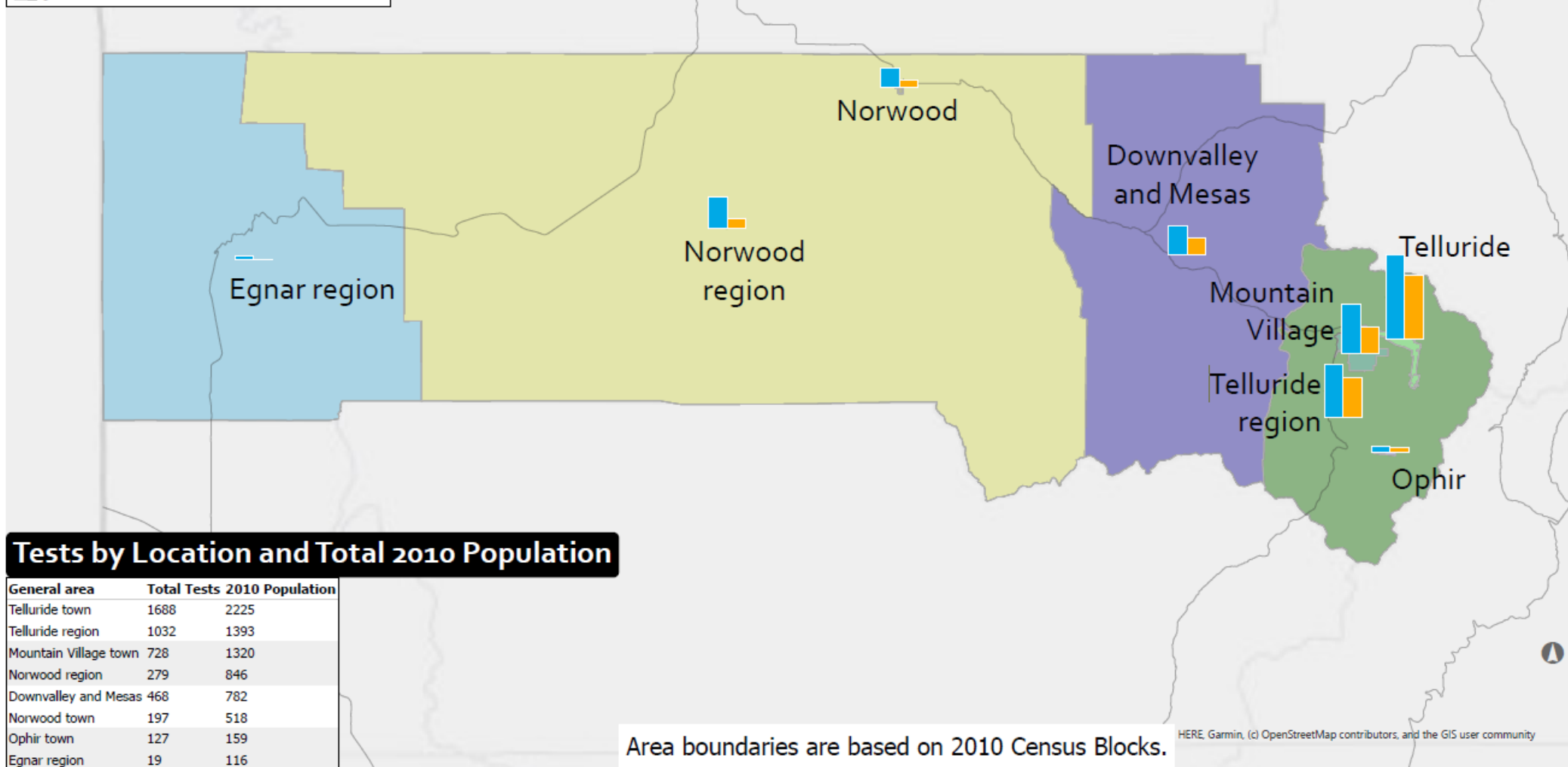
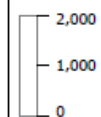
Total tests by location

Population source: 2010 Census. San Miguel County only.

Tests by Location and Total 2010 Population

2010 Population
Total Tests

Selected fields



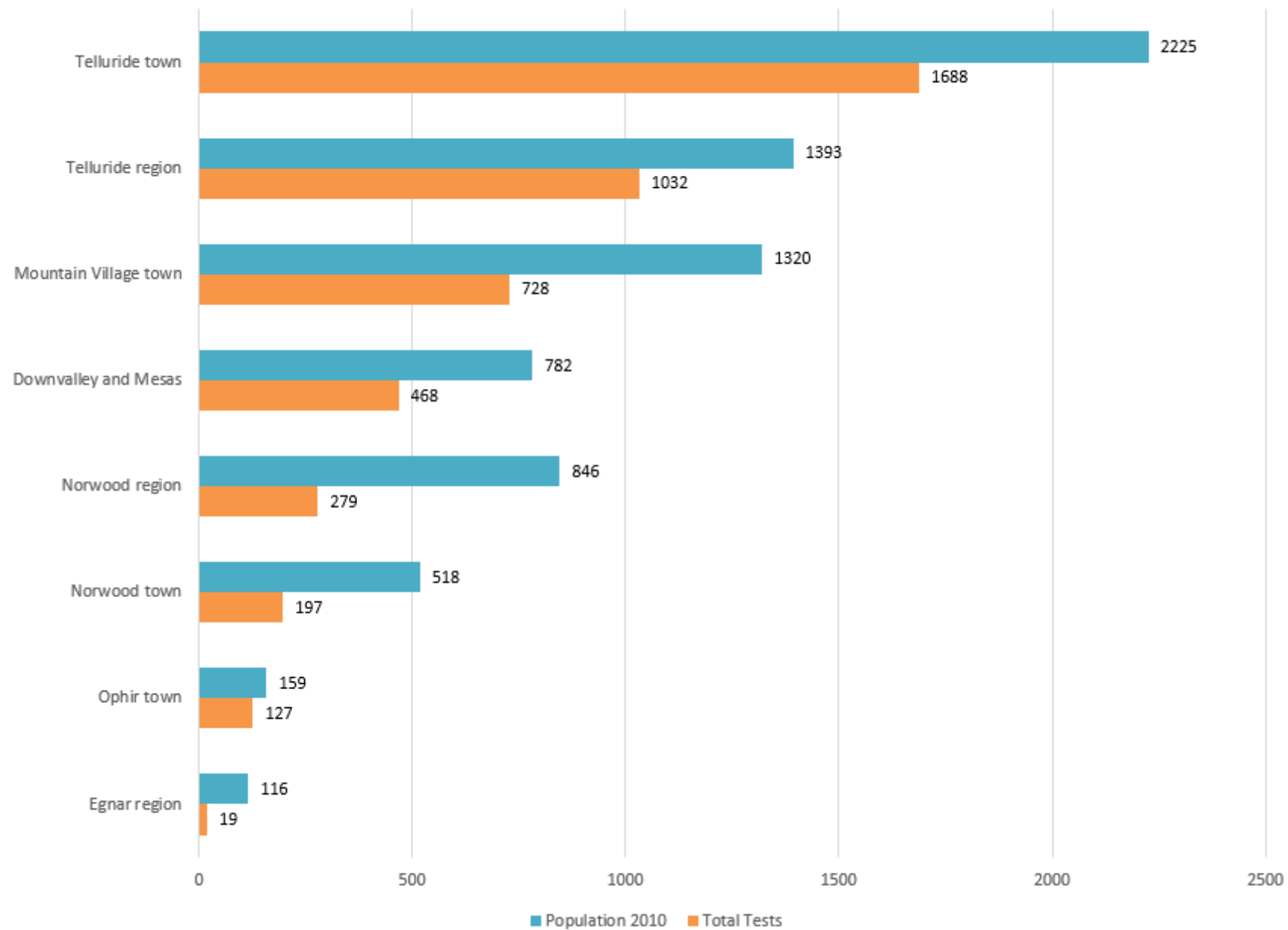
Tests by Location and Total 2010 Population

General area	Total Tests	2010 Population
Telluride town	1688	2225
Telluride region	1032	1393
Mountain Village town	728	1320
Norwood region	279	846
Downvalley and Mesas	468	782
Norwood town	197	518
Ophir town	127	159
Egnar region	19	116

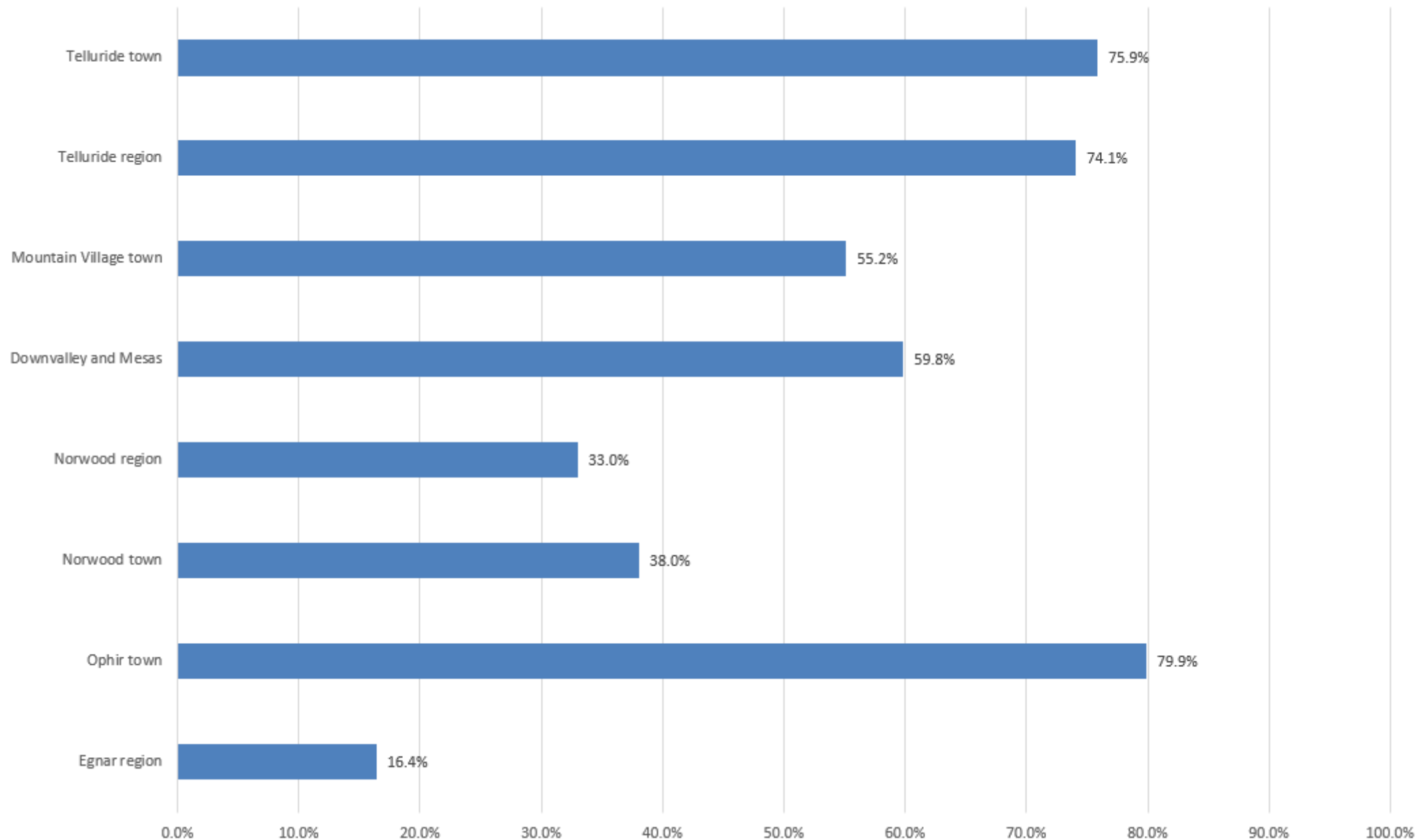
Area boundaries are based on 2010 Census Blocks.

HERE, Garmin, (c) OpenStreetMap contributors, and the GIS user community

Total Tests and 2010 Population by General Area

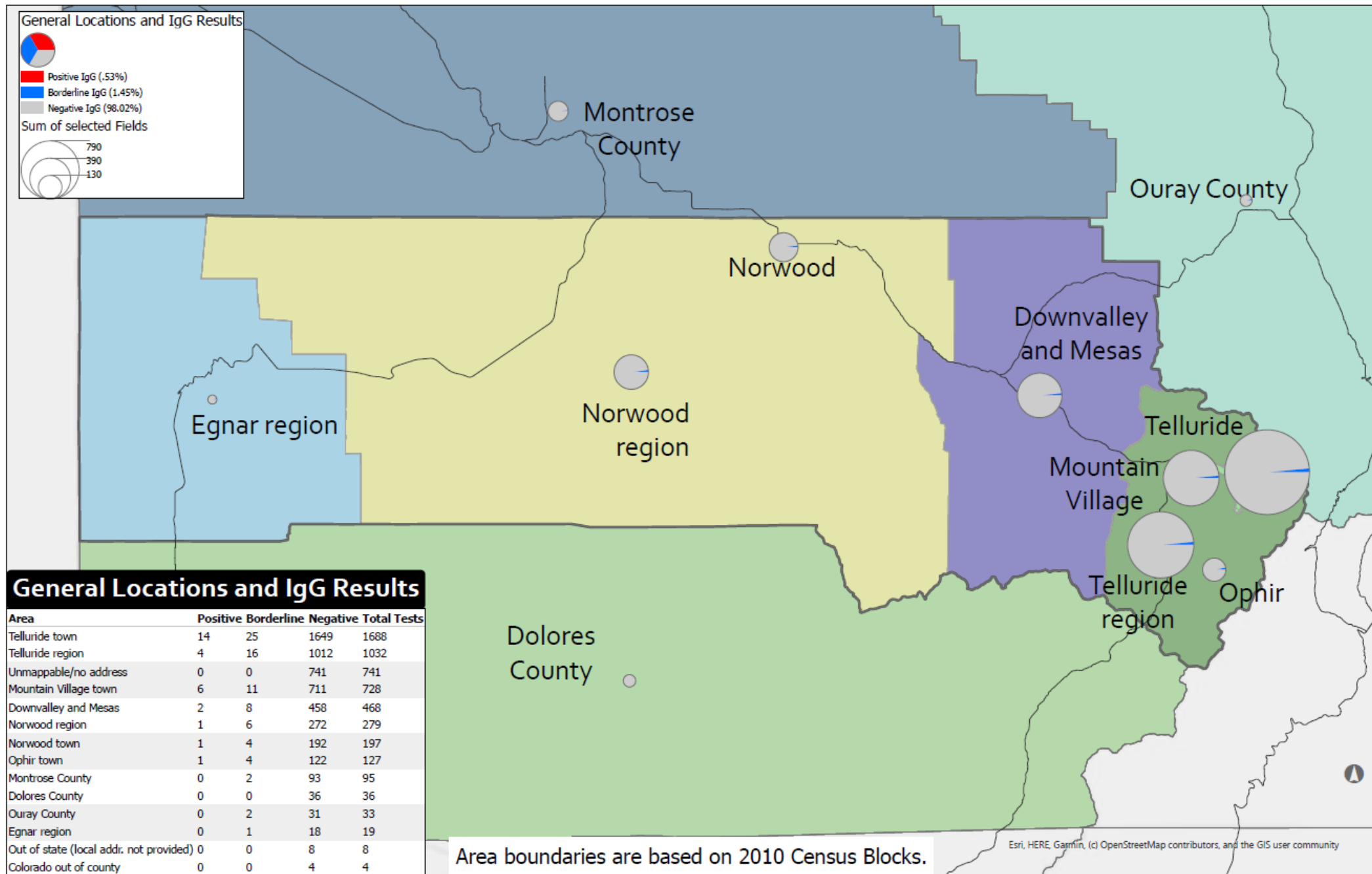


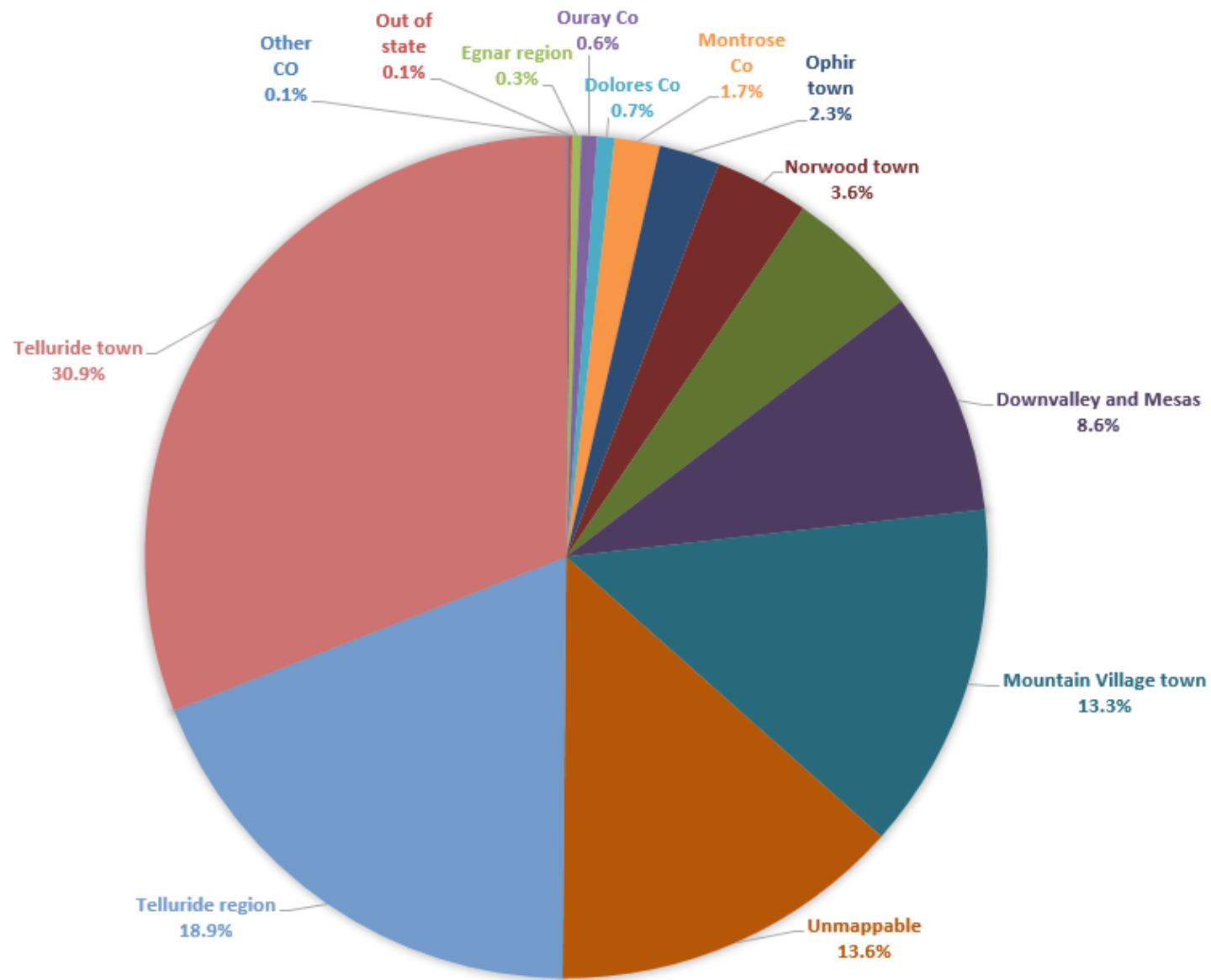
Percent Population Tested by Location (2010 Census)



Results by location

*NOTE: 13.6% of negative results were not mappable based on the address provided, or no address was provided.

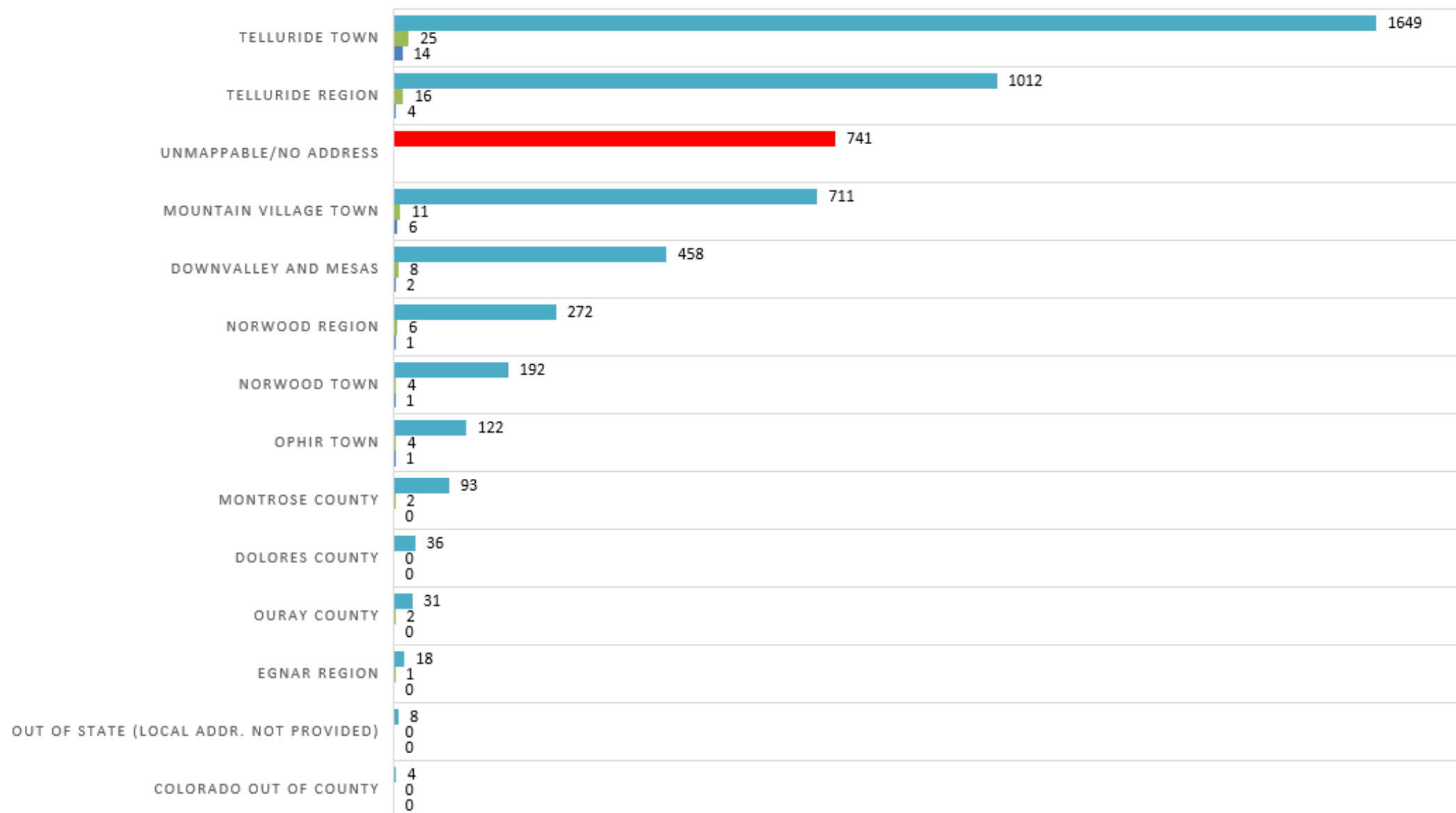




PERCENTAGE OF TOTAL TESTS BY LOCATION

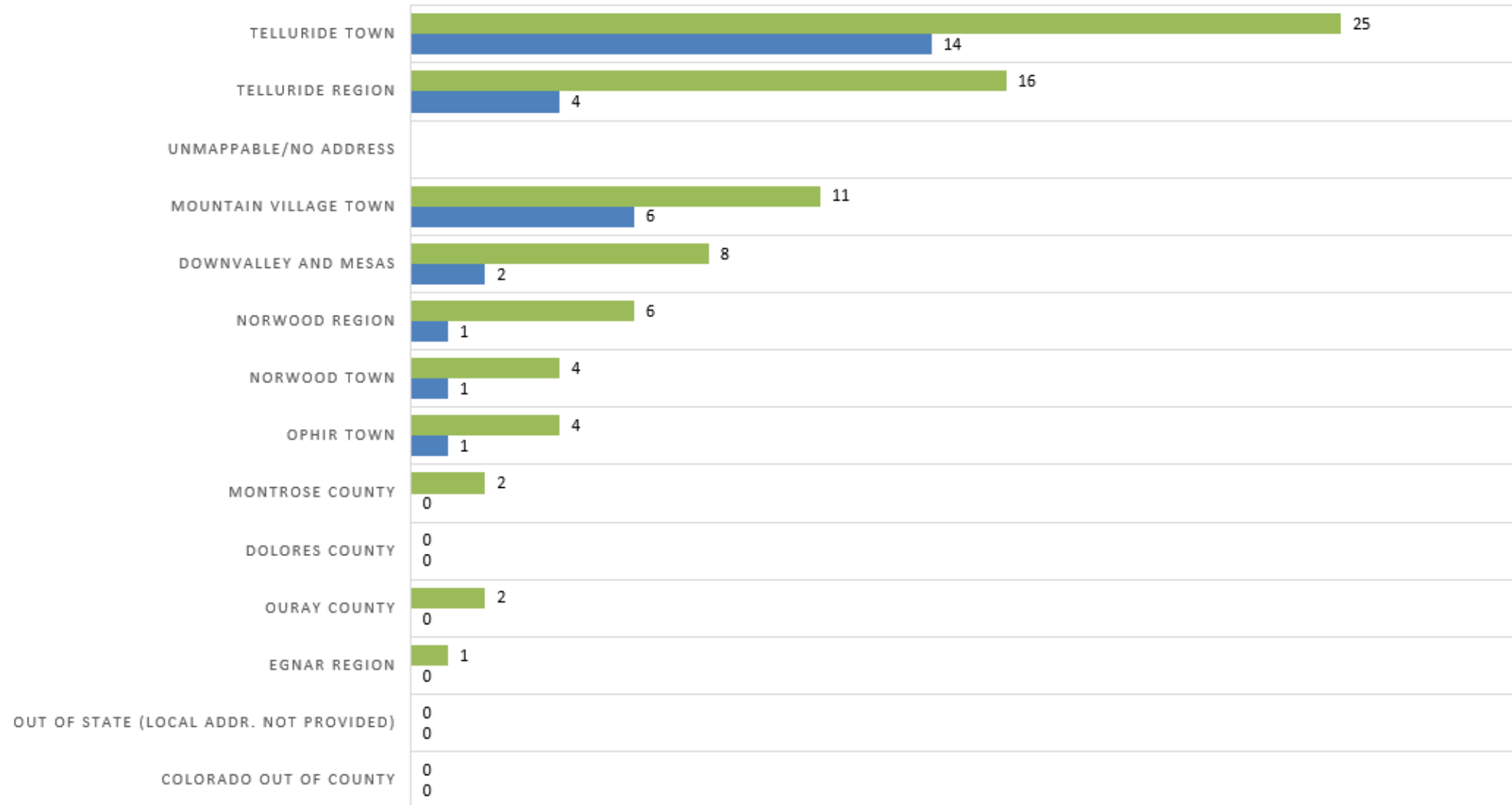
IGG ANTIBODY TESTS BY GENERAL LOCATION AND RESULT

■ Negative ■ Borderline ■ Positive



IGG ANTIBODY TESTS (POSITIVE/BORDERLINE) BY GENERAL LOCATION AND RESULT

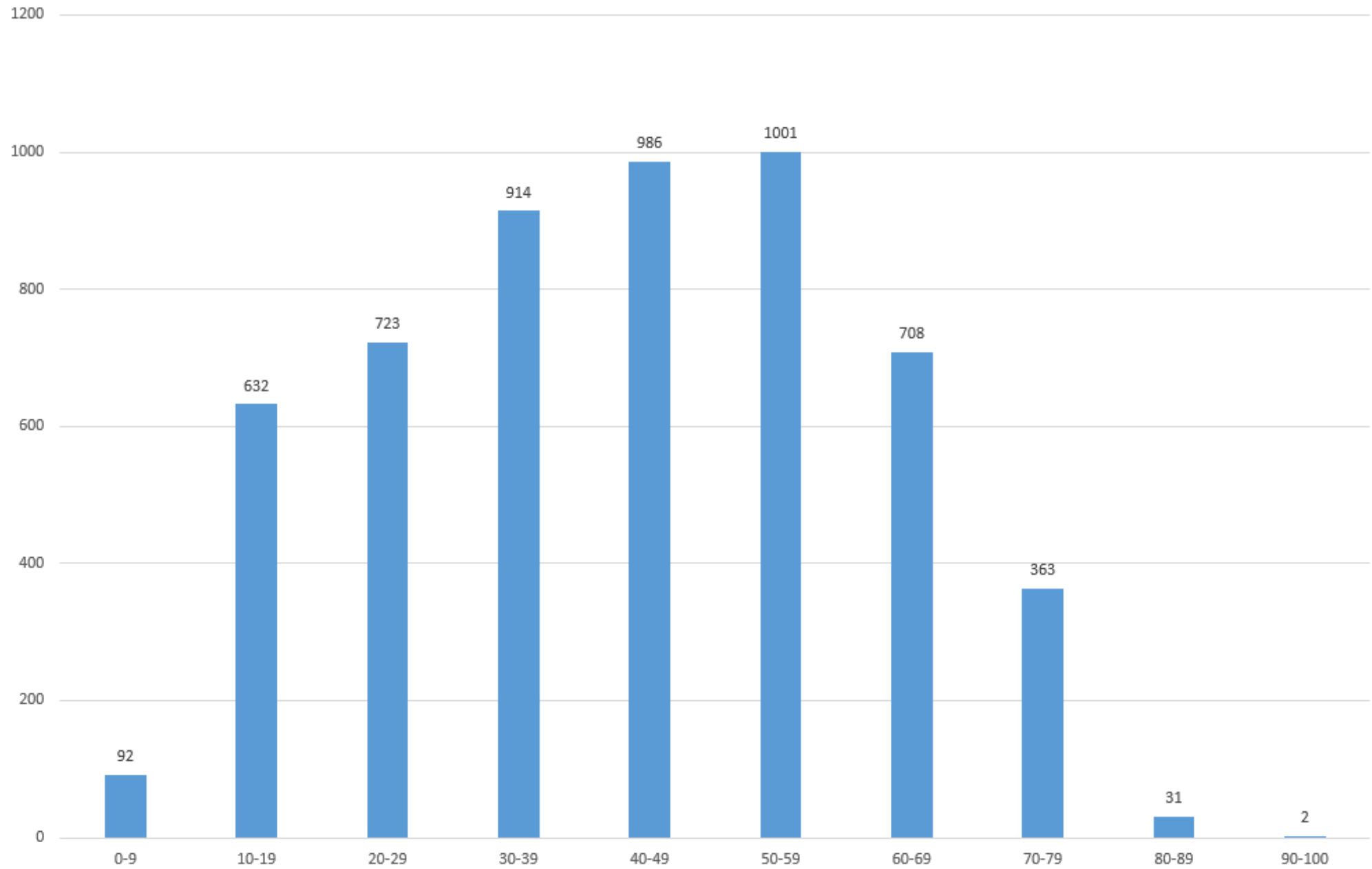
■ Borderline ■ Positive



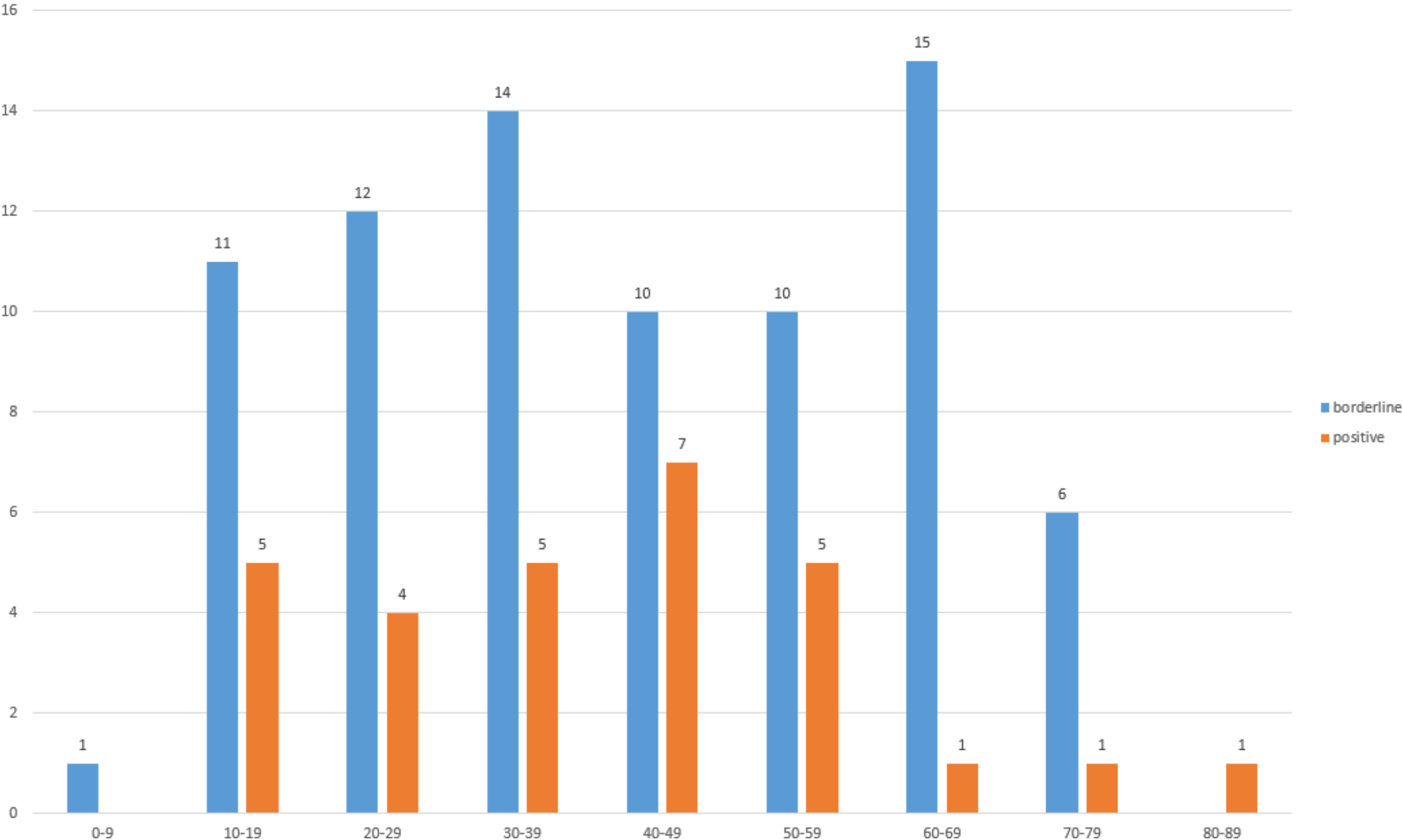
DEMOGRAPHICS

*NOTE Demographic information not available for all tested.

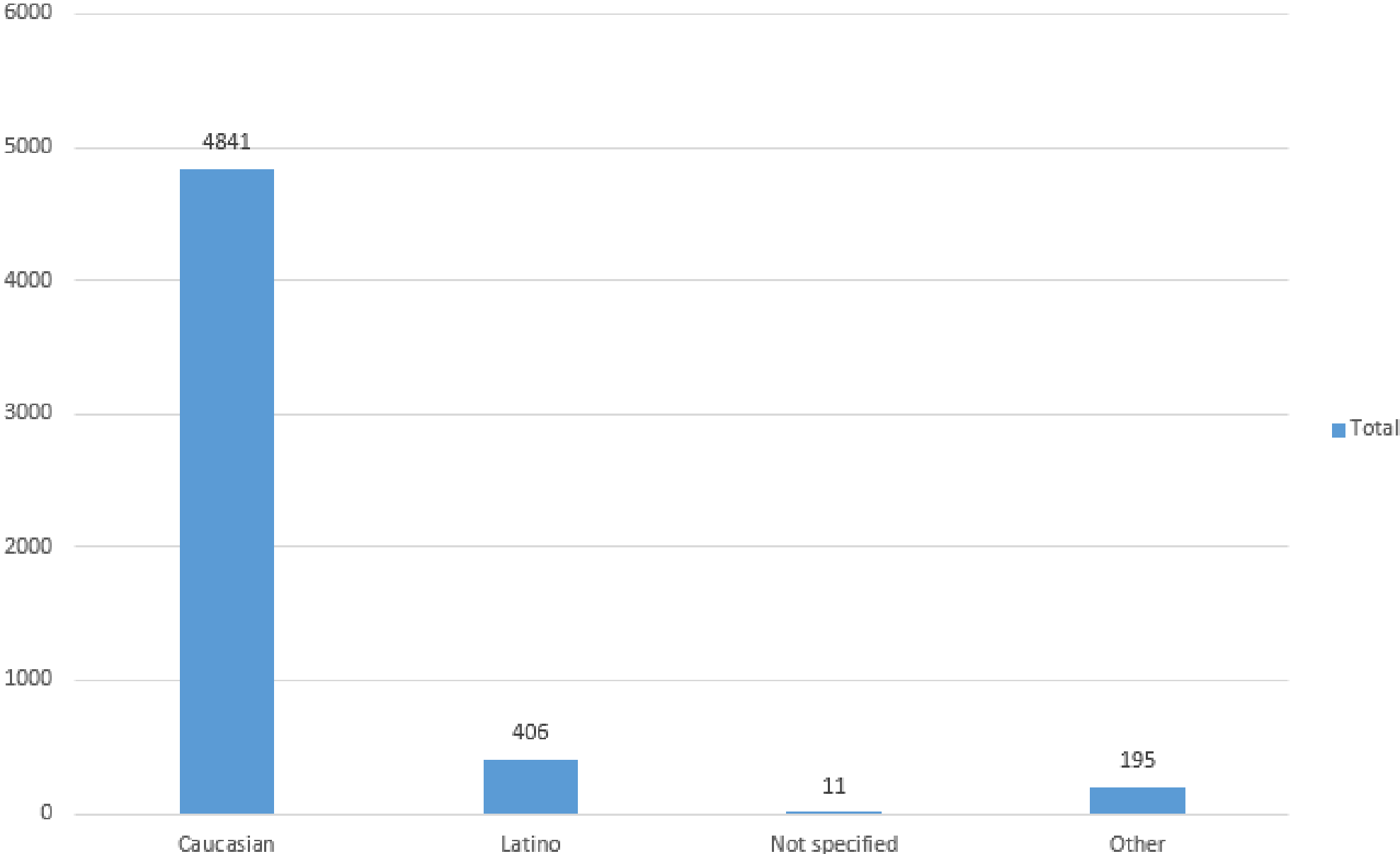
Total Tests Age Distribution



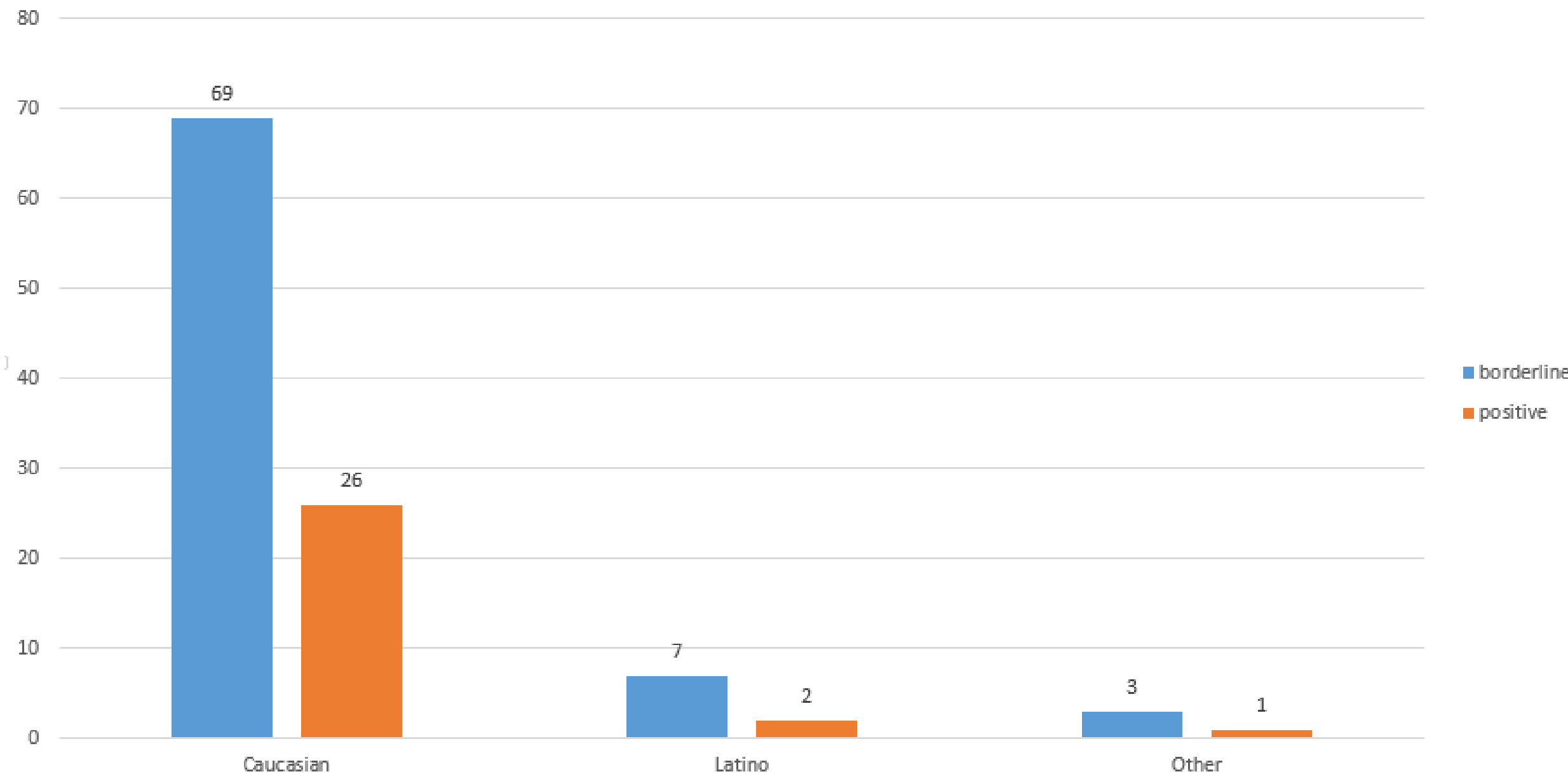
Age Distribution, Borderline & Positive



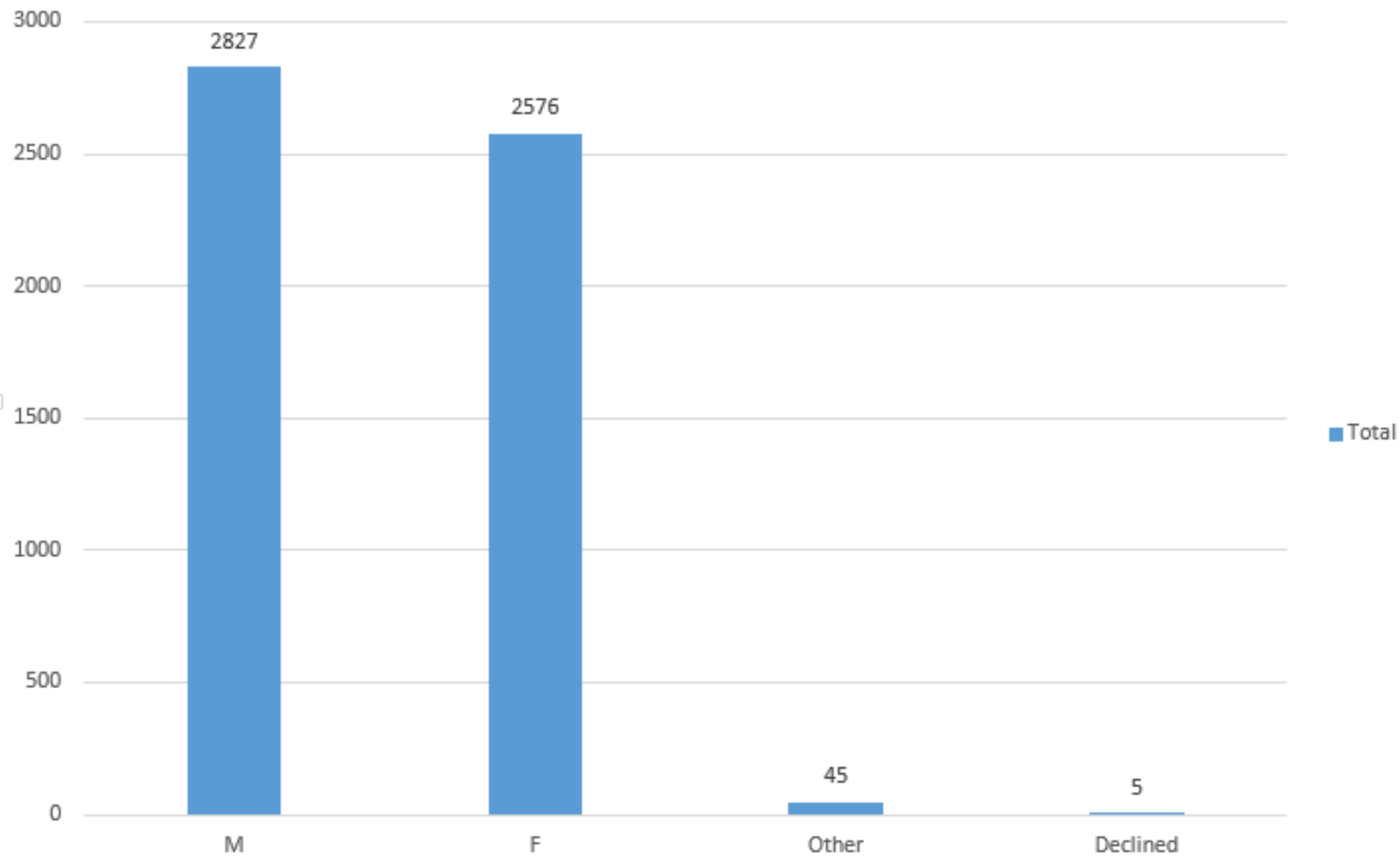
Total Tests Ethnicity Distribution



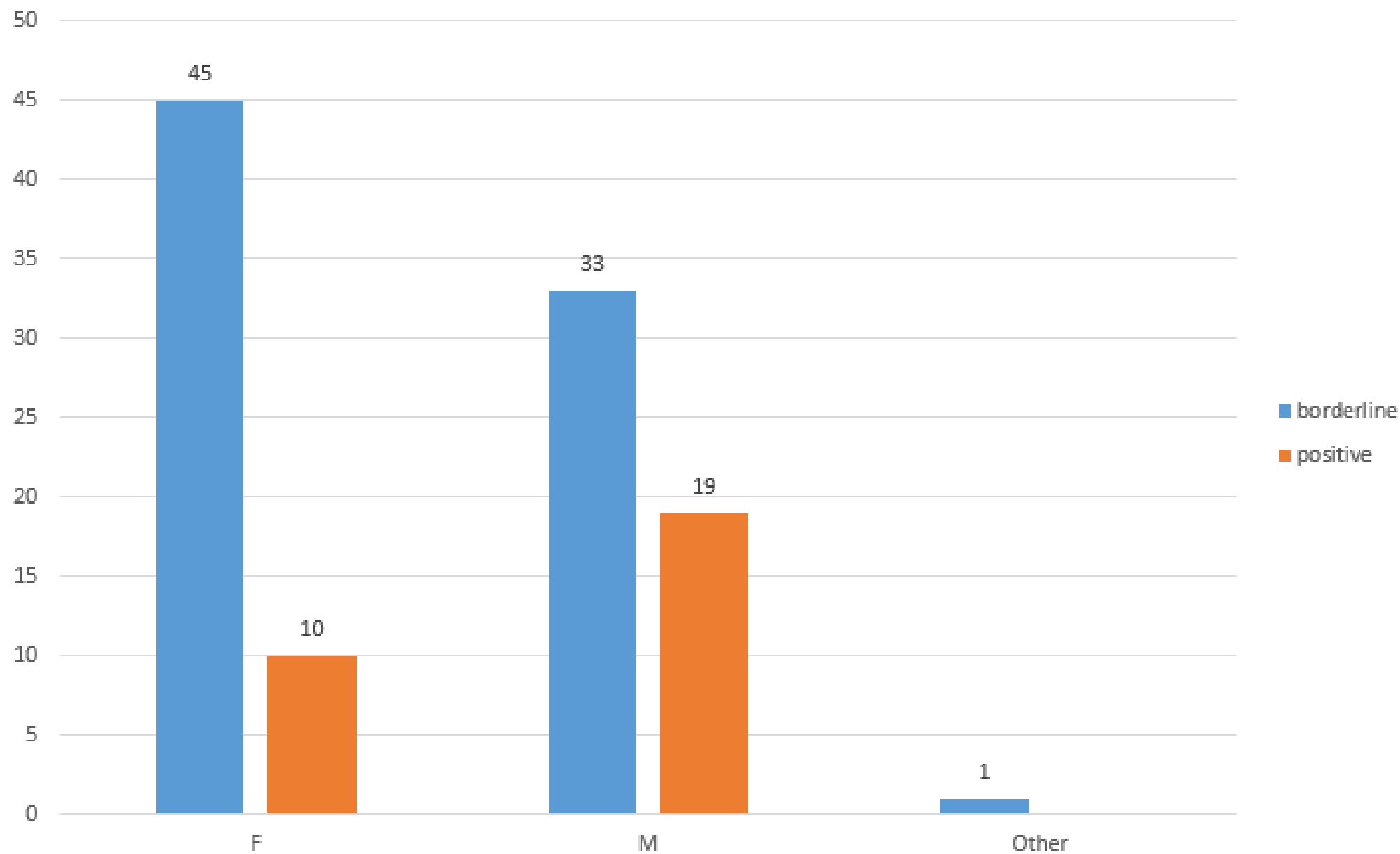
Ethnicity Distribution, Borderline & Positive



Total Tests Gender Distribution



Gender Distribution, Borderline & Positive



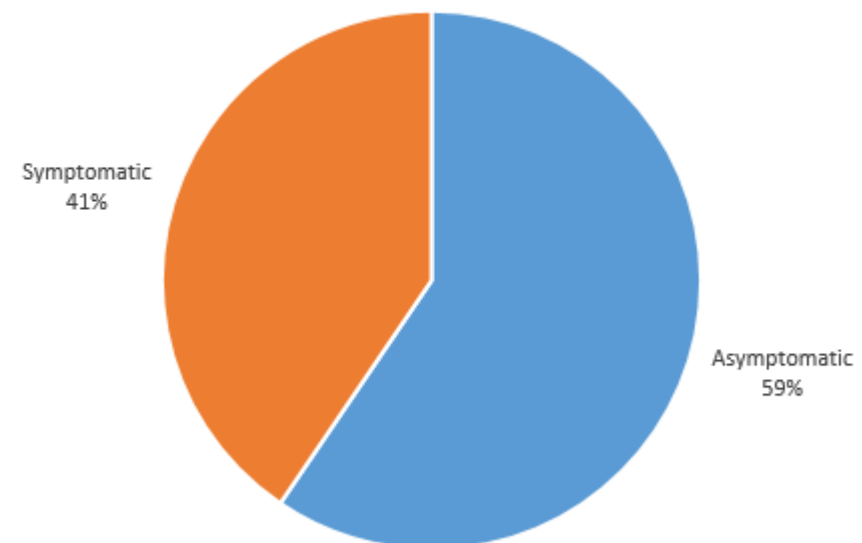
SYMPTOMATIC/ASYMPTOMATIC

*NOTE Symptom data not available for all tested. Symptoms were self-reported.

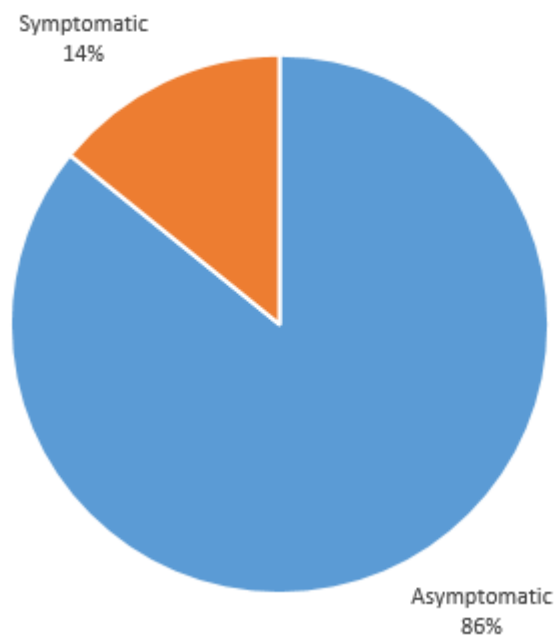
Positive IgG Tests (29) Symptomatic



Borderline IgG Tests (79) Symptomatic



Negative IgG Tests (4703) Symptomatic



Data compilation 5/2020 by Heather Widlund, Geographic Information Systems Coordinator
gis@sanmiguelcountyco.gov