



SPECIAL MEETING AGENDA

Wednesday, March 10, 2021

Join a Meeting, Zoom.us, Meeting Id # 534.180.495, Password 014764, audio 1-301-715-8592 or 1-253-215-8782
Telluride, Colorado

1. **9:30 AM CALL TO ORDER - ZOOM Special Meeting - Zoom.us - Join a Meeting, Meeting Id # 534.180.495, Password 014764, audio 1-301-715-8592 or 1-253-215-8782**
2. **REVIEW OF AGENDA**
3. **CALENDAR REVIEW**
4. **CONSENT AGENDA - None.**
5. **9:30 AM ADMINISTRATIVE MATTERS**
 - a. 9:30 am Executive Session: Discussion determining negotiating positions concerning the Wilson Mesa Parcel, citation (4)(e).
Commissioners and Staff
 - b. Discussion on using Coronavirus Relief Fund (CVRF) funds.
Lance Waring, Commissioner and Mike Bordogna, County Manager
 - c. 10:45 am Discussion of the Sneffels Energy Board Climate Action plan and goals.
Commissioners; Kim Wheels, EcoAction Partners
 - d. 11:10 am Presentation of the Good Samaritan legislation.
20 mins Ty Churchwell, Trout Unlimited
 - e. Consideration of approving the Steincrusher LLC independent contractor agreement with Road & Bridge for gravel crushing./MOTION
 - f. Other, as needed.
6. **Recess for agenda-setting with the Board and Staff (No decisions will be made).**

7. 12:45 PM PUBLIC HEALTH AND ENVIRONMENT

(Board of Commissioners sitting as the San Miguel County Board of Public Health and Environment.)

- a. 12:45 pm Update on the fiscal impacts of COVID for San Miguel County.
10 mins Mike Bordogna, County Manager and Ramona Rummel,
Director of Finance
- b. 1:00 pm Discussion and update with the San Miguel County Stakeholders
concerning the COVID 19 outbreak.
75 mins Grace Franklin, Public Health Director
- c. Potential Executive Session: Concerning Public Health, Meeting with an
Attorney, citation (4)(b).
- d. Other, as needed.

8. UPDATE WITH THE COUNTY MANAGER

- a. Other, as needed.

9. GOVERNMENT AFFAIRS/NATURAL RESOURCES

- a. 3:30 pm Update with Siemens Industry concerning the Energy Project.
45 mins Lynn Padgett, Government Affairs/Natural Resource Director
- b. Other, as needed.

10. COMMISSIONER UPDATES

- a. Hilary Cooper - Updates on Legislation.

11. ADJOURNMENT

NOTE: This agenda is subject to change, including the addition of items up to 24 hours in advance or the deletion of items at any time. All times are approximate. The County Manager reports may include administrative items not listed. Regular Meetings, Public Hearings, and Special Meetings are recorded, and ACTION MAY BE TAKEN ON ANY ITEM. Formal Action cannot be taken at Work Sessions. For further information, contact the County Administration office at 970-728-3174. If special accommodations are necessary per ADA, contact 970-728-3174 prior to the meeting.

The official, designated posting place for all BOCC notices will be online at <https://www.sanmiguelcountyco.gov/liveagenda>. Use this link to view the live agenda with any last-minute changes. To be automatically notified, please sign up

at www.sanmiguelcountyco.gov, sign up for alerts, and follow the prompts.



AGENDA ITEM - 5.a.

TITLE:

9:30 am Executive Session: Discussion determining negotiating positions concerning the Wilson Mesa Parcel, citation (4)(e).

Presented by: Commissioners and Staff

Time needed:

PREPARED BY:

RECOMMENDED ACTION/MOTION:

INTRODUCTION/BACKGROUND:

State Land Board Packet Link:

https://drive.google.com/file/d/1BJ_IzU1kWDNVspWdb7MLS8ahWuEt89Vg/view

FISCAL IMPACT:

Contract Number:	Date Executed	End Date	Department(s)
YYYY-###			Board of County Commissioner Staff
Description:			



AGENDA ITEM - 5.b.

TITLE:

Discussion on using Coronavirus Relief Fund (CVRF) funds.

Presented by: Lance Waring, Commissioner and Mike Bordogna, County Manager

Time needed:

PREPARED BY:

RECOMMENDED ACTION/MOTION:

INTRODUCTION/BACKGROUND:

FISCAL IMPACT:

Contract Number:	Date Executed	End Date	Department(s)
YYYY-###			Board of County Commissioner Staff
Description:			



AGENDA ITEM - 5.c.

TITLE:

10:45 am Discussion of the Sneffels Energy Board Climate Action plan and goals.

Presented by: Commissioners; Kim Wheels, EcoAction Partners

Time needed:

PREPARED BY:

RECOMMENDED ACTION/MOTION:

INTRODUCTION/BACKGROUND:

From: **Kim Wheels** <kim@ecoactionpartners.org>
Date: Mon, Feb 22, 2021 at 1:46 PM
Subject: SEB: Climate Action Plan - Action review - Response requested
To: Kim Wheels <kim@ecoactionpartners.org>

Hello Sneffels Energy Board!

EcoAction Partners' team has incorporated comments from our January meeting discussion into a revised spreadsheet of actions. Prior to considering this list "final" and incorporating it into the CAP document framework, we'd like your approval and any additional input.

During this review process, please keep in mind what we discussed in January: that this CAP will be a "roadmap" for EVERYONE in our region, to guide us toward collaboratively achieving our GHG reduction goals and creating the future we'd like to see. The CAP is intended to guide us for the next 10 years, so some actions are already occurring, some will be achievable short-term, and others will be more long-term. An estimated timeframe for implementation will be included for each action and used as a guideline to help us with a regular review process. The recommendations listed are typically a little higher-level, in order to allow the details of accomplishing the action to be determined as needed and for flexibility of different methods to achieve them in different communities. They are not necessarily the responsibility of a government or any particular group to implement or achieve on their own. So, if the collective WE has any ability to influence the changes we'd like to see happen, we've included the action.

Attached are files specific for each jurisdiction, for ease of review and approval by each government. We've included a Y (yes) in each column for approval of this regional recommendation to be included. If you do NOT approve of the action being included as a regional recommendation, OR an action's wording needs to be revised for it to be approvable, please indicate by changing the entry to N (no) and indicating revised wording if applicable. Our aim is for this document to be adoptable by each government and agreeable to the greater community, so if any actions need to be moved or modified in order for this to happen, please comment accordingly.

Actions that are not applicable across the region, will be included in jurisdiction-specific lists in an Appendix. Items identified thus far are color-coded orange in the spreadsheet, with only the applicable municipalities indicated in the columns. In addition to these, please list & identify any other specific projects that would be appropriate to include for your jurisdiction. Ideally, each jurisdiction will have ~5-10 specific items listed in their section of the Appendix.

to specific items listed in their section of the Appendix.

We've also added a column to identify potential key partners (outside of municipalities and EcoAction Partners) that could or would need to work with us to achieve the action. Partners that are not already participating in the Sneffels Energy Board will be contacted during this next phase of CAP development, in order to get their input and buy-in on applicable actions, as we plan to list partners in the CAP. If you have ideas for other partners that should be listed next to an action, please add the partner in RED or BOLD so that we can include them.

If you do not represent a government, we encourage you to still review the action list on behalf of the organization or community that you represent. Broad buy-in and input by all SEB representatives will make this a stronger plan and will help guide us toward the community outreach and engagement phase of this project.

Please send an Excel file back to me (not the whole group) with your comments by March 8. We'll incorporate all feedback into 1 spreadsheet and then into the CAP report. If you need to communicate with other elected officials or staff members to gain greater perspective or support, please do so, but keep in mind this is not a public document. We plan to gain broader public support and input after this "executive level" process with the SEB. If you have any questions or items to discuss during your review, please reach out and let me know.

Thank you all for your time, energy and dedication toward this process!

Kim

--

Kim Wheels
EcoAction Partners - Energy Specialist
San Miguel & Ouray Counties, Colorado
www.ecoactionpartners.org
970-728-1340 (o)
970-708-9674 (c)

--

Lance Waring
San Miguel County Commissioner District Two
970 708-0629 (cell)

9 Attachments

FISCAL IMPACT:

Contract Number:	Date Executed	End Date	Department(s)
YYYY-###			Board of County Commissioner Staff
Description:			

ATTACHMENTS:

Description	Upload Date
San Miguel County - This is the one we will be discussing	3/5/2021
Mountain Village - FYI	3/5/2021
Norwood - FYI	3/5/2021
Ophir - FYI	3/5/2021
Ouray County - FYI	3/5/2021

Ouray County - FYI

Ouray - FYI

Ridgway - FYI

Telluride FYI

3/5/2021

3/5/2021

3/5/2021

3/5/2021

Recommendation	Comments	GHG Reduction	SMC	PARTNERS
Through continued engagement with community members, elected officials and partner organizations, SEB will advance climate and energy policy to the benefit of the community. Given the dynamic nature of the policy landscape, SEB will continue a formal process for prioritizing and advocating on key issues.				
Continue to participate in regional collaboration of local governments, stakeholders and utilities to drive regional clean energy transition & GHG emissions reduction	Existing through Sneffels Energy Board	4	Y	SEB
Participate in state-level organizations to drive regional clean energy transition & GHG emissions reduction	Continue to participate in CC4CA; & others	1	Y	CC4CA & others
Consider GHG emissions as part of all decision-making processes. Utilize a GHG impact assessment tool, if available, to quantify GHG emission or sequestration impacts.	All governments, organizations, communities use an effective impact assessment tool. Examples topics: Tourist marketing, Affordable housing, new large construction projects, impact of increased flights & tourism... and on the sequestration side: revegetation projects, tree planting, LUC policies, etc.		Y	ICLEI ClearPath Tool
Increase community-level outreach and engagement with implementation of the Climate Action Plan.			Y	WPL, other libraries? Rotary Club? Telluride Institute?
Collaborate between municipalities & organizations on actions when beneficial.			Y	SEB

Recommendation	Comments	GHG Reduction Potential	SMC	PARTNERS
OBJECTIVE: Increase percentage of electricity provided by renewable energy sources.				
Establish a local renewable energy generation target and implement actions to achieve it.	Do not specify target in CAP.	3	Y	SMPA
Identify and eliminate barriers to local renewable energy generation.	Tri-state cap with SMPA contract; Waive permit fees; Local regulations; Sales Tax Legislation	2	Y	SMPA; WCU
Advance regional grid flexibility to enable a modernize renewable electricity supply.	Include as guidance / input from SEB to SMPA	4	Y	SMPA
Install renewable energy on government facilities.	Examples already exist, what other potential is there?	3	Y	DOLA grants? SMPA
Incentivize, promote & encourage net-metered solar systems on residential & commercial roofs / or ideal pole-mount locations	Encourage RE development consideration in Land Use Codes? Master Plans?	4	Y	SMPA; Solar installers? HOA's?
Encourage community participation in SMPA Totally Green program for electricity not covered by local renewable energy production	Support SMPA in establishing goals & promotion?	4	Y	SMPA, WCU, RSCC, Rotary Club; Telluride Institute; HOA's... Anyone who sends out community newsletters
Work with renewable energy installation businesses to promote RE incentives & financing opportunities.	SMPA; MV; others? CO RENU Loan; Alpine Bank Loan; C-PACE	2	Y	SMPA; Solar installers?

Recommendation	Comments	GHG Reduction Potential	SMC	PARTNERS
OBJECTIVE: Beneficial Electrification of Buildings				
Transition building mechanical equipment and appliances from fossil fuels to electricity through incentives, outreach and building codes. Include: space and water heating, appliances and other equipment	Focus on New Construction & Retrofits / time of replacement. Existing: SMPA incentives & Trade Ally program	4	Y	SMPA
Encourage transition to / use of geothermal, air source heat pumps, or other available heat exchange technology	Is GSHP applicable in our region? Encourage transition to cold climate air source heat pumps (ccASHP). Expensive?	4	Y	SMPA
Codes for New Construction, Remodels and Additions				
Adopt the 2018 International codes with specific local requirements to exceed minimum standards.	2018 IECC adopted by most jurisdictions (but not yet all). INCLUDE IN ACCOMPLISHMENTS and indicate short-term Municipal-specific actions for those that have not yet adopted.	3	SMC	
Strengthen existing building efficiency standards and codes to require 10% better than basic code construction, update building energy codes at least every 6 years, and move towards Net Zero Energy buildings. Incentivize Beyond Code construction practices.	Incentivize now, aim toward strengthening codes.	3	Y	
Continue to coordinate regional alignment of energy codes and 'beyond code' preferences	ongoing effort; began 2008... CONTINUE	2	Y	
Facilitate education for contractors, architects and property managers	Ongoing by EAP, could increase in partnership with others	1	Y	Municipal Building Departments
Promote / incentivize optimal control systems and thermostat settings to couple comfort with efficiency	MUNICIPAL-SPECIFIC?	4		BHE; SMPA

Promote / Incentivize building automation systems (such as key card entry activation of electricity in lodging rooms)	Lodging oriented action. MUNICIPAL-SPECIFIC?	?		BHE; SMPA
Natural Gas Efficiency:				
Continue rebate and incentive programs to replace old or inefficient systems/appliances	BHE residential, small business & large commercial programs exist	2	Y	BHE; SMPA
Encourage water tank insulation and pipe wrap on hot water systems	with high R-value insulation & pipe wrap, GHG potential increases	1	Y	BHE; SMPA
Provide technical assistance for natural gas heating alternatives	In process: develop & expands SMPA Trade Ally program	1	Y	SMPA
Improve the energy efficiency performance of existing buildings		4		
Continue to provide and educate community members on energy efficiency and renewable energy incentives available from SMPA, BHE, and municipalities.	BHE programs; SMPA incentives. ALREADY IN PLACE. CONTINUE.	2	Y	BHE; SMPA
Incentivize refrigeration upgrades	Incentivize yes, by SMPA / Tri-State? Green Grants? use of E-Temp equipment?	2	Y	BHE; SMPA
Incentivize, mandate & educate on "Away" mode technology for second homes when unoccupied	EDUCATE; MAKE MANDATORY;	2	Y	
examples: Property Assessed Clean Energy; CO RENEW; Alpine Bank and other specialized financing mechanisms	Expand outreach beyond EAP programs	2	Y	CO government ; banks
Encourage utilities to implement energy use comparison mechanism in monthly billing.	BHE's program was highly effective at increasing interest in energy assessments. Resulted in identification of gas leaks, inefficient controls & more. SMPA implement O-POWER or similar? Encourage BHE to reinstate their program?	4	Y	BHE; SMPA
Reduce energy consumption in rentals, apartments and multifamily buildings		3		

Support building automation to optimize efficiency and effectiveness	MORE APPLICABILITY W LARGE HOMES & COMMERCIAL BUILDINGS	3	Y	Regional trades expertise
Incentivize energy efficiency upgrades in rental properties	TOWN-SPECIFIC; PRIORITIZE LOW INCOME	2		
Incentivize large employers that provide seasonal housing to deploy large-scale energy efficiency upgrades	MV-specific	2		
Develop renter-specific outreach and education campaigns	MUNICIPAL-SPECIFIC?	1		
Anticipate and mitigate likely expansion of air conditioning use in new & existing buildings	Installation of A/C seems to be dictated by new incoming owners to the region, however improving controls & design to mitigate would help.	2		
Avoid or prolong the need for air conditioning via building design and management. Utilize education & outreach to building trades, owners, and facility and property managers.	EAP Property Manager & Building trade education programs could address this.	3	Y	
Encourage high efficiency air conditioning systems as AC use becomes more prevalent	beyond code requirements? increase SMPA incentive requirements?	2	Y	
Coordinate with efforts to adopt high efficiency electric heating systems (i.e. dual ground/air-source heat pumps)	Overlaps with above; SMPA Trade Ally program w/ ccASHP	2	Y	
Others:				
Encourage continued regular "Cost of Service Studies" by SMPA to incentivize and balance current and future priorities (i.e. EVs, fuel switching, time of use, peak shaving, energy efficiency, DSM).	Include	3	Y	SMPA
Continue to host and expand EcoAction Partners Green business program awarding and highlighting business that achieve energy efficiency and sustainability thresholds	EAP Green Business program CONTINUE	1	Y	Chambers of Commerce; Rotary Club; & other business

Recommendation	EAP Staff Comments	GHG Reduction Potential	SMC	PARTNERS
OBJECTIVE: Decrease vehicle travel				
Continue Outreach & Education efforts around mass transit options.			Y	SMART; Region 10
Subsidize/make bus passes available to commuting workers	Already being done to some extent. More opportunity to work with other big employers in area, SMART, etc.?	2	Y	TSG; other large employers; SMART
Enable more workforce to live near work or improve transit options	Affordable Housing	4	Y	
Reduce in-community vehicle use by residents and visitors.			Y	
OBJECTIVE: Increase use of Electric Vehicles (EVs)				
Improved tracking & analysis of EV station use	SMPA metering per EV station (& not mixed with infrastructure electricity use) would be helpful.	1	Y	SMPA
Provide free EV charging stations	What locations are free? Other locations needed? Market station locations more broadly.	2	Y	SMPA
Increase # EV charging stations when current EV stations are shown to be at peak capacity.	If there is demand, increase in visible/accessible locations (FUTURE ITEM)	2	Y	SMPA
Electrify fleet vehicles when viable.	SMART has plans. Timeframe?	4	Y	SMART; SMPA

[illegible]

Recommendation	EAP Staff Comments	GHG Reduction Potential	SMC	PARTNERS
OBJECTIVE: Decrease GHG emissions per passenger associated with airline flights serving our region				Regional airports; TEX
Educate, Outreach and Encourage travelers to offset their travel with carbon offset programs, emphasizing locally available options.	- Does TEX already promote / market the Carbon offset program available through PCI to passengers? YES, we have coordinated with Pinhead Institute on various occasions during busy activity in a Carbon Offset program since 2017.	1	Y	Regional airports; TEX
Support policies that encourage airlines to increase plane capacity/decrease # of flights.	Market forces / feasibility of influence concerns.		Y	Regional airports; TEX
Encourage increased use of biofuel as jet fuels at all regional airports. Support education of passengers about use of biofuels.	Telluride airport initiated use 2021. "TEX will be one of the first Airports that will begin utilizing blended bio and recycled Jet Fuel that meets all aircraft performance standards". More expensive, low supply volume currently. Longer term goal for other regional airports to use. "- Does TEX have a plan to market / communicate with passengers and the broader community TEX's use of biofuel? YES, we are preparing marketing and communication with the help of our fuel supplier AVFUEL. As a means of educating the public & increasing public support? YES - Is TEX using SAF for all of the Jet-A fuel provided at the airport? NO Or just a percentage at this point? At this time our goal is to provide 25% of our fuel sales as SAF. We are balancing costs and availability. We are proud to say that we will be one of the first Airports in Colorado that provide SAF.	4/1	Y	Regional airports; TEX

Recommendation	EAP Staff Comments	GHG Reduction Potential	SMC	PARTNERS
OBJECTIVE: Reduce the overall volume of waste transported to landfills. Reduce, Reuse, Recycle, Repurpose and Composting.				
Continue community outreach, education & engagement efforts to reduce waste and improve effective utilization of recycling services and composting options.	Decrease paper consumption; Reduce single-use plastics; & more fall under this broader category	2 Y		Composting businesses or programs, such as Dirty Sturdy's
Require waste haulers to improve available waste volume data.	State-level requirements for WM to provide data? Include in municipal contracts at time of renewal.	2 Y		
Expand Plastic Film Upcycling Program and other recycling programming	EAP Plastic Film program growing.	2 Y		
Continue hazardous waste collection services and increase availability to other communities	SMC annual collection. Ouray County?	2/1 Y		
Decrease festival & event waste through waste reduction, resource recovery & composting. Require contracts for services where appropriate.	Telluride requires for most festivals. Ridgway volunteers manage (improved composting methodology needed).	2 Y		Festival & event owners & managers
Support restaurants and businesses with waste reduction.	Zero Waste checklist: include in EAP Green Business Program. Collaborate with partners for greater outreach	2 Y		
Encourage waste haulers to use clean vehicles.		3 Y		Waste Management; Bruin; 3XM
OBJECTIVE: Increase Composting in the region.	Potential to reduce 65% of landfill waste through composting			
Increase community compost programs and individual residential composters, and encourage participation in composting programs.	FUTURE potential to require composting, but must first increase availability & viability of use	2 Y		

Recommendation	EAP Staff Comments	GHG Reduction Potential	SMC	PARTNERS
OBJECTIVE: Reduce Water Consumption from Municipal and Industrial Uses				
Continue to track water and wastewater use data, associated energy use, & impacts of conservation / drought measures	SEB annual water data analysis	1	Y	Municipal water departments
Evaluate & implement system methodologies to reduce water-associated energy use		2	Y	
Install water meters	Utilize financial incentive programs. Establish water rate structures based on use. MUNICIPAL-SPECIFIC	1/1		CO state grants
Water usage data improvement	continue making progress to understand water consumption and reduce water system leakage MUNICIPAL-SPECIFIC			
environmentally sound domestic water conservation plans.	What communities do not yet have them?	1	N/A	
Encourage/incentivize low flow water fixtures	Partially required by building codes & conservation plans	2	Y	CO state government support?
OBJECTIVE: Improve watershed health and security				
Continue development, adoption, implementation and enforcement of municipal drought mitigation plans to reduce water use.	CONTINUE - Outside watering restrictions are effective as seen through water data tracking. ANY MUNICIPALITIES NOT HAVE THEM YET?	1	Y	
Support efforts of organizations (local, regional, and statewide) that focus on water security and watershed ecological health.		1	Y	San Miguel Watershed Coalition; Uncompaghr e Watershed Partnership

[illegible]

Recommendation	EAP Staff Comments	GHG Reduction Potential	SMC	PARTNERS
OBJECTIVES: Increase the GHG sequestration and water retention capacity of land in the region.	SMC PES component			MANY! Including agricultural producers
Increase yield and health of crops and livestock, through the use of regenerative agricultural and ranching practices.	SMC PES component			
Increase GHG sequestration capacity of trees and plant life in the region.	SMC PES component			
Support San Miguel County in implementing their Payment for EcoSystem Services (PES) Program. https://sanmiguelwc.maps.arcgis.com/apps/MapJournal/index.html?appid=e7b35f74886344afb6931deadea6e4fc	SMC Land Use GHG Inventory - COMPLETE, so list as accomplishment, along with a link to it. PES is SMC program to improve soil health through changes in land management practices. Track benefits through calculations of associated carbon sequestration and other metrics.		Y	
Utilize SMC's Land Use GHG Inventory and PES Program experiences to develop and implement similar land use recommendations for Ouray County	Or implement a similar study specific for Ouray County. FUTURE			
Quantify GHG impacts of carbon sequestration actions and relate them to our GHG emissions inventory.			Y	Comet-Planner? NRCS? SMC PES Program
Increase measures to promote and protect healthy forests.	in their bodies and below the soil surface, protecting certain areas of the forest ensures long term sequestration capacity	2	Y	USFS. Land Trusts. Sheep Mountain Alliance. Citizen groups...
Implement programs, develop incentives and encourage the planting of trees appropriate for specific ecological zones.	Existing initiatives with Extension office, Seas of Trees, & others	3	Y	Extension Office; Seas of Trees; others?
Encourage landscaping according to recommended best practices for local ecological zone	i.e. Ecology Commission guidelines under development; low water use vegetation; etc.	2	Y	Extension Office;

[illegible]

Recommendation	Comments	GHG Reduction	MV	PARTNERS
Through continued engagement with community members, elected officials and partner organizations, SEB will advance climate and energy policy to the benefit of the community. Given the dynamic nature of the policy landscape, SEB will continue a formal process for prioritizing and advocating on key issues.				
Continue to participate in regional collaboration of local governments, stakeholders and utilities to drive regional clean energy transition & GHG emissions reduction	Existing through Sneffels Energy Board	4	Y	SEB
Participate in state-level organizations to drive regional clean energy transition & GHG emissions reduction	Continue to participate in CC4CA; & others	1	Y	CC4CA & others
Consider GHG emissions as part of all decision-making processes. Utilize a GHG impact assessment tool, if available, to quantify GHG emission or sequestration impacts.	All governments, organizations, communities use an effective impact assessment tool. Examples topics: Tourist marketing, Affordable housing, new large construction projects, impact of increased flights & tourism... and on the sequestration side: revegetation projects, tree planting, LUC policies, etc.		Y	ICLEI ClearPath Tool
Increase community-level outreach and engagement with implementation of the Climate Action Plan.			Y	WPL, other libraries? Rotary Club? Telluride Institute?
Collaborate between municipalities & organizations on actions when beneficial.			Y	SEB

Recommendation	Comments	GHG Reduction Potential	MV	PARTNERS
OBJECTIVE: Increase percentage of electricity provided by renewable energy sources.				
Establish a local renewable energy generation target and implement actions to achieve it.	Do not specify target in CAP.	3	Y	SMPA
Identify and eliminate barriers to local renewable energy generation.	Tri-state cap with SMPA contract; Waive permit fees; Local regulations; Sales Tax Legislation	2	Y	SMPA; WCU
Advance regional grid flexibility to enable a modernize renewable electricity supply.	Include as guidance / input from SEB to SMPA	4	Y	SMPA
Install renewable energy on government facilities.	Examples already exist, what other potential is there?	3	Y	DOLA grants? SMPA
Incentivize, promote & encourage net-metered solar systems on residential & commercial roofs / or ideal pole-mount locations	Encourage RE development consideration in Land Use Codes? Master Plans?	4	Y	SMPA; Solar installers? HOA's?
Encourage community participation in SMPA Totally Green program for electricity not covered by local renewable energy production	Support SMPA in establishing goals & promotion?	4	Y	SMPA, WCU, RSCC, Rotary Club; Telluride Institute; HOA's... Anyone who sends out community newsletters
Work with renewable energy installation businesses to promote RE incentives & financing opportunities.	SMPA; MV; others? CO RENU Loan; Alpine Bank Loan; C-PACE	2	Y	SMPA; Solar installers?

Recommendation	Comments	GHG Reduction Potential	MV	PARTNERS
OBJECTIVE: Beneficial Electrification of Buildings				
Transition building mechanical equipment and appliances from fossil fuels to electricity through incentives, outreach and building codes. Include: space and water heating, appliances and other equipment	Focus on New Construction & Retrofits / time of replacement. Existing: SMPA incentives & Trade Ally program	4	Y	SMPA
Encourage transition to / use of geothermal, air source heat pumps, or other available heat exchange technology	Is GSHP applicable in our region? Encourage transition to cold climate air source heat pumps (ccASHP). Expensive?	4	Y	SMPA
Codes for New Construction, Remodels and Additions				
Adopt the 2018 International codes with specific local requirements to exceed minimum standards.	2018 IECC adopted by most jurisdictions (but not yet all). INCLUDE IN ACCOMPLISHMENTS and indicate short-term Municipal-specific actions for those that have not yet adopted.	3		
Strengthen existing building efficiency standards and codes to require 10% better than basic code construction, update building energy codes at least every 6 years, and move towards Net Zero Energy buildings. Incentivize Beyond Code construction practices.	Incentivize now, aim toward strengthening codes.	3	Y	
Continue to coordinate regional alignment of energy codes and 'beyond code' preferences	ongoing effort; began 2008... CONTINUE	2	Y	
Facilitate education for contractors, architects and property managers	Ongoing by EAP, could increase in partnership with others	1	Y	Municipal Building Departments
Promote / incentivize optimal control systems and thermostat settings to couple comfort with efficiency	MUNICIPAL-SPECIFIC?	4	MV	BHE; SMPA

Promote / Incentivize building automation systems (such as key card entry activation of electricity in lodging rooms)	Lodging oriented action. MUNICIPAL-SPECIFIC?	?	MV	BHE; SMPA
Natural Gas Efficiency:				
Continue rebate and incentive programs to replace old or inefficient systems/appliances	BHE residential, small business & large commercial programs exist	2	Y	BHE; SMPA
Encourage water tank insulation and pipe wrap on hot water systems	with high R-value insulation & pipe wrap, GHG potential increases	1	Y	BHE; SMPA
Provide technical assistance for natural gas heating alternatives	In process: develop & expands SMPA Trade Ally program	1	Y	SMPA
Improve the energy efficiency performance of existing buildings		4		
Continue to provide and educate community members on energy efficiency and renewable energy incentives available from SMPA, BHE, and municipalities.	BHE programs; SMPA incentives. ALREADY IN PLACE. CONTINUE.	2	Y	BHE; SMPA
Incentivize refrigeration upgrades	Incentivize yes, by SMPA / Tri-State? Green Grants? use of E-Temp equipment?	2	Y	BHE; SMPA
Incentivize, mandate & educate on "Away" mode technology for second homes when unoccupied	EDUCATE; MAKE MANDATORY;	2	Y	
examples: Property Assessed Clean Energy; CO RENEW; Alpine Bank and other specialized financing mechanisms	Expand outreach beyond EAP programs	2	Y	CO government ; banks
Encourage utilities to implement energy use comparison mechanism in monthly billing.	BHE's program was highly effective at increasing interest in energy assessments. Resulted in identification of gas leaks, inefficient controls & more. SMPA implement O-POWER or similar? Encourage BHE to reinstate their program?	4	Y	BHE; SMPA
Reduce energy consumption in rentals, apartments and multifamily buildings		3		

Support building automation to optimize efficiency and effectiveness	MORE APPLICABILITY W LARGE HOMES & COMMERCIAL BUILDINGS	3	Y	Regional trades expertise
Incentivize energy efficiency upgrades in rental properties	TOWN-SPECIFIC; PRIORITIZE LOW INCOME	2	MV?	
Incentivize large employers that provide seasonal housing to deploy large-scale energy efficiency upgrades	MV-specific	2	MV	
Develop renter-specific outreach and education campaigns	MUNICIPAL-SPECIFIC?	1	MV?	
Anticipate and mitigate likely expansion of air conditioning use in new & existing buildings	Installation of A/C seems to be dictated by new incoming owners to the region, however improving controls & design to mitigate would help.	2		
Avoid or prolong the need for air conditioning via building design and management. Utilize education & outreach to building trades, owners, and facility and property managers.	EAP Property Manager & Building trade education programs could address this.	3	Y	
Encourage high efficiency air conditioning systems as AC use becomes more prevalent	beyond code requirements? increase SMPA incentive requirements?	2	Y	
Coordinate with efforts to adopt high efficiency electric heating systems (i.e. dual ground/air-source heat pumps)	Overlaps with above; SMPA Trade Ally program w/ ccASHP	2	Y	
Others:				
Encourage continued regular "Cost of Service Studies" by SMPA to incentivize and balance current and future priorities (i.e. EVs, fuel switching, time of use, peak shaving, energy efficiency, DSM).	Include	3	Y	SMPA
Continue to host and expand EcoAction Partners Green business program awarding and highlighting business that achieve energy efficiency and sustainability thresholds	EAP Green Business program CONTINUE	1	Y	Chambers of Commerce; Rotary Club; & other business

Recommendation	EAP Staff Comments	GHG Reduction Potential	MV	PARTNERS
OBJECTIVE: Decrease vehicle travel				
Continue Outreach & Education efforts around mass transit options.			Y	SMART; Region 10
Subsidize/make bus passes available to commuting workers	Already being done to some extent. More opportunity to work with other big employers in area, SMART, etc.?	2	Y	TSG; other large employers; SMART
Enable more workforce to live near work or improve transit options	Affordable Housing	4	Y	
Reduce in-community vehicle use by residents and visitors.			Y	
OBJECTIVE: Increase use of Electric Vehicles (EVs)				
Improved tracking & analysis of EV station use	SMPA metering per EV station (& not mixed with infrastructure electricity use) would be helpful.	1	Y	SMPA
Provide free EV charging stations	What locations are free? Other locations needed? Market station locations more broadly.	2	Y	SMPA
Increase # EV charging stations when current EV stations are shown to be at peak capacity.	If there is demand, increase in visible/accessible locations (FUTURE ITEM)	2	Y	SMPA
Electrify fleet vehicles when viable.	SMART has plans. Timeframe?	4	Y	SMART; SMPA

[illegible]

Recommendation	EAP Staff Comments	GHG Reduction Potential	MV	PARTNERS
OBJECTIVE: Decrease GHG emissions per passenger associated with airline flights serving our region				Regional airports; TEX
Educate, Outreach and Encourage travelers to offset their travel with carbon offset programs, emphasizing locally available options.	- Does TEX already promote / market the Carbon offset program available through PCI to passengers? YES, we have coordinated with Pinhead Institute on various occasions during busy activity in a Carbon Offset program since 2017.	1	Y	Regional airports; TEX
Support policies that encourage airlines to increase plane capacity/decrease # of flights.	Market forces / feasibility of influence concerns.		Y	Regional airports; TEX
Encourage increased use of biofuel as jet fuels at all regional airports. Support education of passengers about use of biofuels.	Telluride airport initiated use 2021. "TEX will be one of the first Airports that will begin utilizing blended bio and recycled Jet Fuel that meets all aircraft performance standards". More expensive, low supply volume currently. Longer term goal for other regional airports to use. "- Does TEX have a plan to market / communicate with passengers and the broader community TEX's use of biofuel? YES, we are preparing marketing and communication with the help of our fuel supplier AVFUEL. As a means of educating the public & increasing public support? YES - Is TEX using SAF for all of the Jet-A fuel provided at the airport? NO Or just a percentage at this point? At this time our goal is to provide 25% of our fuel sales as SAF. We are balancing costs and availability. We are proud to say that we will be one of the first Airports in Colorado that provide SAF.	4/1	Y	Regional airports; TEX

Recommendation	EAP Staff Comments	GHG Reduction Potential	MV	PARTNERS
OBJECTIVE: Reduce the overall volume of waste transported to landfills. Reduce, Reuse, Recycle, Repurpose and Composting.				
Continue community outreach, education & engagement efforts to reduce waste and improve effective utilization of recycling services and composting options.	Decrease paper consumption; Reduce single-use plastics; & more fall under this broader category	2 Y		Composting businesses or programs, such as Dirty Sturdy's
Require waste haulers to improve available waste volume data.	State-level requirements for WM to provide data? Include in municipal contracts at time of renewal.	2 Y		
Expand Plastic Film Upcycling Program and other recycling programming	EAP Plastic Film program growing.	2 Y		
Continue hazardous waste collection services and increase availability to other communities	SMC annual collection. Ouray County?	2/1 Y		
Decrease festival & event waste through waste reduction, resource recovery & composting. Require contracts for services where appropriate.	Telluride requires for most festivals. Ridgway volunteers manage (improved composting methodology needed).	2 Y		Festival & event owners & managers
Support restaurants and businesses with waste reduction.	Zero Waste checklist: include in EAP Green Business Program. Collaborate with partners for greater outreach	2 Y		
Encourage waste haulers to use clean vehicles.		3 Y		Waste Management; Bruin; 3XM
OBJECTIVE: Increase Composting in the region.	Potential to reduce 65% of landfill waste through composting			
Increase community compost programs and individual residential composters, and encourage participation in composting programs.	FUTURE potential to require composting, but must first increase availability & viability of use	2 Y		

Recommendation	EAP Staff Comments	GHG Reduction Potential	MV	PARTNERS
OBJECTIVE: Reduce Water Consumption from Municipal and Industrial Uses				
Continue to track water and wastewater use data, associated energy use, & impacts of conservation / drought measures	SEB annual water data analysis	1	Y	Municipal water departments
Evaluate & implement system methodologies to reduce water-associated energy use		2	Y	
Install water meters	Utilize financial incentive programs. Establish water rate structures based on use. MUNICIPAL-SPECIFIC	1/1		CO state grants
Water usage data improvement	continue making progress to understand water consumption and reduce water system leakage MUNICIPAL-SPECIFIC			
environmentally sound domestic water conservation plans.	What communities do not yet have them?	1	MV	
Encourage/incentivize low flow water fixtures	Partially required by building codes & conservation plans	2	Y	CO state government support?
OBJECTIVE: Improve watershed health and security				
Continue development, adoption, implementation and enforcement of municipal drought mitigation plans to reduce water use.	CONTINUE - Outside watering restrictions are effective as seen through water data tracking. ANY MUNICIPALITIES NOT HAVE THEM YET?	1	Y	
Support efforts of organizations (local, regional, and statewide) that focus on water security and watershed ecological health.		1	Y	San Miguel Watershed Coalition; Uncompaghr e Watershed Partnership

[illegible]

Recommendation	EAP Staff Comments	GHG Reduction Potential	MV	PARTNERS
OBJECTIVES: Increase the GHG sequestration and water retention capacity of land in the region.	SMC PES component			MANY! Including agricultural producers
Increase yield and health of crops and livestock, through the use of regenerative agricultural and ranching practices.	SMC PES component			
Increase GHG sequestration capacity of trees and plant life in the region.	SMC PES component			
Support San Miguel County in implementing their Payment for EcoSystem Services (PES) Program. https://sanmiguelwc.maps.arcgis.com/apps/MapJournal/index.html?appid=e7b35f74886344afb6931deadea6e4fc	SMC Land Use GHG Inventory - COMPLETE, so list as accomplishment, along with a link to it. PES is SMC program to improve soil health through changes in land management practices. Track benefits through calculations of associated carbon sequestration and other metrics.		Y	
Utilize SMC's Land Use GHG Inventory and PES Program experiences to develop and implement similar land use recommendations for Ouray County	Or implement a similar study specific for Ouray County. FUTURE			
Quantify GHG impacts of carbon sequestration actions and relate them to our GHG emissions inventory.			Y	Comet-Planner? NRCS? SMC PES Program
Increase measures to promote and protect healthy forests.	in their bodies and below the soil surface, protecting certain areas of the forest ensures long term sequestration capacity	2	Y	USFS. Land Trusts. Sheep Mountain Alliance. Citizen groups...
Implement programs, develop incentives and encourage the planting of trees appropriate for specific ecological zones.	Existing initiatives with Extension office, Seas of Trees, & others	3	Y	Extension Office; Seas of Trees; others?
Encourage landscaping according to recommended best practices for local ecological zone	i.e. Ecology Commission guidelines under development; low water use vegetation; etc.	2	Y	Extension Office;

[illegible]

Recommendation	Comments	GHG Reduction	Norwood	PARTNERS
Through continued engagement with community members, elected officials and partner organizations, SEB will advance climate and energy policy to the benefit of the community. Given the dynamic nature of the policy landscape, SEB will continue a formal process for prioritizing and advocating on key issues.				
Continue to participate in regional collaboration of local governments, stakeholders and utilities to drive regional clean energy transition & GHG emissions reduction	Existing through Sneffels Energy Board	4	Y	SEB
Participate in state-level organizations to drive regional clean energy transition & GHG emissions reduction	Continue to participate in CC4CA; & others	1	Y	CC4CA & others
Consider GHG emissions as part of all decision-making processes. Utilize a GHG impact assessment tool, if available, to quantify GHG emission or sequestration impacts.	All governments, organizations, communities use an effective impact assessment tool. Examples topics: Tourist marketing, Affordable housing, new large construction projects, impact of increased flights & tourism... and on the sequestration side: revegetation projects, tree planting, LUC policies, etc.		Y	ICLEI ClearPath Tool
Increase community-level outreach and engagement with implementation of the Climate Action Plan.			Y	WPL, other libraries? Rotary Club? Telluride Institute?
Collaborate between municipalities & organizations on actions when beneficial.			Y	SEB

Recommendation	Comments	GHG Reduction Potential	Norwood	PARTNERS
OBJECTIVE: Increase percentage of electricity provided by renewable energy sources.				
Establish a local renewable energy generation target and implement actions to achieve it.	Do not specify target in CAP.	3	Y	SMPA
Identify and eliminate barriers to local renewable energy generation.	Tri-state cap with SMPA contract; Waive permit fees; Local regulations; Sales Tax Legislation	2	Y	SMPA; WCU
Advance regional grid flexibility to enable a modernize renewable electricity supply.	Include as guidance / input from SEB to SMPA	4	Y	SMPA
Install renewable energy on government facilities.	Examples already exist, what other potential is there?	3	Y	DOLA grants? SMPA
Incentivize, promote & encourage net-metered solar systems on residential & commercial roofs / or ideal pole-mount locations	Encourage RE development consideration in Land Use Codes? Master Plans?	4	Y	SMPA; Solar installers? HOA's?
Encourage community participation in SMPA Totally Green program for electricity not covered by local renewable energy production	Support SMPA in establishing goals & promotion?	4	Y	SMPA; WFE, RCOG, Rotary Club; Telluride Institute; HOA's... Anyone who sends out community newsletters
Work with renewable energy installation businesses to promote RE incentives & financing opportunities.	SMPA; MV; others? CO RENU Loan; Alpine Bank Loan; C-PACE	2	Y	SMPA; Solar installers?

Recommendation	Comments	GHG Reduction Potential	Norwood	PARTNERS
OBJECTIVE: Beneficial Electrification of Buildings				
Transition building mechanical equipment and appliances from fossil fuels to electricity through incentives, outreach and building codes. Include: space and water heating, appliances and other equipment	Focus on New Construction & Retrofits / time of replacement. Existing: SMPA incentives & Trade Ally program	4	Y	SMPA
Encourage transition to / use of geothermal, air source heat pumps, or other available heat exchange technology	Is GSHP applicable in our region? Encourage transition to cold climate air source heat pumps (ccASHP). Expensive?	4	Y	SMPA
Codes for New Construction, Remodels and Additions				
Adopt the 2018 International codes with specific local requirements to exceed minimum standards.	2018 IECC adopted by most jurisdictions (but not yet all). INCLUDE IN ACCOMPLISHMENTS and indicate short-term Municipal-specific actions for those that have not yet adopted.	3	covered by SMC	
Strengthen existing building efficiency standards and codes to require 10% better than basic code construction, update building energy codes at least every 6 years, and move towards Net Zero Energy buildings. Incentivize Beyond Code construction practices.	Incentivize now, aim toward strengthening codes.	3	Y	
Continue to coordinate regional alignment of energy codes and 'beyond code' preferences	ongoing effort; began 2008... CONTINUE	2	Y	
Facilitate education for contractors, architects and property managers	Ongoing by EAP, could increase in partnership with others	1	Y	Municipal Building Departments
Promote / incentivize optimal control systems and thermostat settings to couple comfort with efficiency	MUNICIPAL-SPECIFIC?	4		BHE; SMPA

Promote / Incentivize building automation systems (such as key card entry activation of electricity in lodging rooms)	Lodging oriented action. MUNICIPAL-SPECIFIC?	?		BHE; SMPA
Natural Gas Efficiency:				
Continue rebate and incentive programs to replace old or inefficient systems/appliances	BHE residential, small business & large commercial programs exist	2	Y	BHE; SMPA
Encourage water tank insulation and pipe wrap on hot water systems	with high R-value insulation & pipe wrap, GHG potential increases	1	Y	BHE; SMPA
Provide technical assistance for natural gas heating alternatives	In process: develop & expands SMPA Trade Ally program	1	Y	SMPA
Improve the energy efficiency performance of existing buildings		4		
Continue to provide and educate community members on energy efficiency and renewable energy incentives available from SMPA, BHE, and municipalities.	BHE programs; SMPA incentives. ALREADY IN PLACE. CONTINUE.	2	Y	BHE; SMPA
Incentivize refrigeration upgrades	Incentivize yes, by SMPA / Tri-State? Green Grants? use of E-Temp equipment?	2	Y	BHE; SMPA
Incentivize, mandate & educate on "Away" mode technology for second homes when unoccupied	EDUCATE; MAKE MANDATORY;	2	Y	
examples: Property Assessed Clean Energy; CO RENEW; Alpine Bank and other specialized financing mechanisms	Expand outreach beyond EAP programs	2	Y	CO government ; banks
Encourage utilities to implement energy use comparison mechanism in monthly billing.	BHE's program was highly effective at increasing interest in energy assessments. Resulted in identification of gas leaks, inefficient controls & more. SMPA implement O-POWER or similar? Encourage BHE to reinstate their program?	4	Y	BHE; SMPA
Reduce energy consumption in rentals, apartments and multifamily buildings		3		

Support building automation to optimize efficiency and effectiveness	MORE APPLICABILITY W LARGE HOMES & COMMERCIAL BUILDINGS	3	Y	Regional trades expertise
Incentivize energy efficiency upgrades in rental properties	TOWN-SPECIFIC; PRIORITIZE LOW INCOME	2		
Incentivize large employers that provide seasonal housing to deploy large-scale energy efficiency upgrades	MV-specific	2		
Develop renter-specific outreach and education campaigns	MUNICIPAL-SPECIFIC?	1		
Anticipate and mitigate likely expansion of air conditioning use in new & existing buildings	Installation of A/C seems to be dictated by new incoming owners to the region, however improving controls & design to mitigate would help.	2		
Avoid or prolong the need for air conditioning via building design and management. Utilize education & outreach to building trades, owners, and facility and property managers.	EAP Property Manager & Building trade education programs could address this.	3	Y	
Encourage high efficiency air conditioning systems as AC use becomes more prevalent	beyond code requirements? increase SMPA incentive requirements?	2	Y	
Coordinate with efforts to adopt high efficiency electric heating systems (i.e. dual ground/air-source heat pumps)	Overlaps with above; SMPA Trade Ally program w/ ccASHP	2	Y	
Others:				
Encourage continued regular "Cost of Service Studies" by SMPA to incentivize and balance current and future priorities (i.e. EVs, fuel switching, time of use, peak shaving, energy efficiency, DSM).	Include	3	Y	SMPA
Continue to host and expand EcoAction Partners Green business program awarding and highlighting business that achieve energy efficiency and sustainability thresholds	EAP Green Business program CONTINUE	1	Y	Chambers of Commerce; Rotary Club; & other business

Recommendation	EAP Staff Comments	GHG Reduction Potential	Norwood	PARTNER S
OBJECTIVE: Decrease vehicle travel				
Continue Outreach & Education efforts around mass transit options.			Y	SMART; Region 10
Subsidize/make bus passes available to commuting workers	Already being done to some extent. More opportunity to work with other big employers in area, SMART, etc.?	2	Y	TSG; other large employers; SMART
Enable more workforce to live near work or improve transit options	Affordable Housing	4	Y	
Reduce in-community vehicle use by residents and visitors.			Y	
OBJECTIVE: Increase use of Electric Vehicles (EVs)				
Improved tracking & analysis of EV station use	SMPA metering per EV station (& not mixed with infrastructure electricity use) would be helpful.	1	Y	SMPA
Provide free EV charging stations	What locations are free? Other locations needed? Market station locations more broadly.	2	Y	SMPA
Increase # EV charging stations when current EV stations are shown to be at peak capacity.	If there is demand, increase in visible/accessible locations (FUTURE ITEM)	2	Y	SMPA
Electrify fleet vehicles when viable.	SMART has plans. Timeframe?	4	Y	SMART; SMPA

[illegible]

Recommendation	EAP Staff Comments	GHG Reduction Potential	Norwood
OBJECTIVE: Decrease GHG emissions per passenger associated with airline flights serving our region			
Educate, Outreach and Encourage travelers to offset their travel with carbon offset programs, emphasizing locally available options.	- Does TEX already promote / market the Carbon offset program available through PCI to passengers? YES, we have coordinated with Pinhead Institute on various occasions during busy activity in a Carbon Offset program since 2017.	1	Y
Support policies that encourage airlines to increase plane capacity/decrease # of flights.	Market forces / feasibility of influence concerns.		Y
Encourage increased use of biofuel as jet fuels at all regional airports. Support education of passengers about use of biofuels.	Telluride airport initiated use 2021. "TEX will be one of the first Airports that will begin utilizing blended bio and recycled Jet Fuel that meets all aircraft performance standards". More expensive, low supply volume currently. Longer term goal for other regional airports to use. "- Does TEX have a plan to market / communicate with passengers and the broader community TEX's use of biofuel? YES, we are preparing marketing and communication with the help of our fuel supplier AVFUEL. As a means of educating the public & increasing public support? YES - Is TEX using SAF for all of the Jet-A fuel provided at the airport? NO Or just a percentage at this point? At this time our goal is to provide 25% of our fuel sales as SAF. We are balancing costs and availability. We are proud to say that we will be one of the first Airports in Colorado that provide SAF.	4/1	Y

PARTNERS

Regional airports; TEX

Regional airports; TEX

Regional airports; TEX

Regional airports; TEX

Recommendation	EAP Staff Comments	GHG Reduction Potential	Norwood	PARTNERS
OBJECTIVE: Reduce the overall volume of waste transported to landfills. Reduce, Reuse, Recycle, Repurpose and Composting.				
Continue community outreach, education & engagement efforts to reduce waste and improve effective utilization of recycling services and composting options.	Decrease paper consumption; Reduce single-use plastics; & more fall under this broader category	2 Y		Composting businesses or programs, such as Dirty Sturdy's
Require waste haulers to improve available waste volume data.	State-level requirements for WM to provide data? Include in municipal contracts at time of renewal.	2 Y		
Expand Plastic Film Upcycling Program and other recycling programming	EAP Plastic Film program growing.	2 Y		
Continue hazardous waste collection services and increase availability to other communities	SMC annual collection. Ouray County?	2/1 Y		
Decrease festival & event waste through waste reduction, resource recovery & composting. Require contracts for services where appropriate.	Telluride requires for most festivals. Ridgway volunteers manage (improved composting methodology needed).	2 Y		Festival & event owners & managers
Support restaurants and businesses with waste reduction.	Zero Waste checklist: include in EAP Green Business Program. Collaborate with partners for greater outreach	2 Y		
Encourage waste haulers to use clean vehicles.		3 Y		Waste Management; Bruin; 3XM
OBJECTIVE: Increase Composting in the region.	Potential to reduce 65% of landfill waste through composting			
Increase community compost programs and individual residential composters, and encourage participation in composting programs.	FUTURE potential to require composting, but must first increase availability & viability of use	2 Y		

Recommendation	EAP Staff Comments	GHG Reduction Potential	Norwood	PARTNERS
OBJECTIVE: Reduce Water Consumption from Municipal and Industrial Uses				
Continue to track water and wastewater use data, associated energy use, & impacts of conservation / drought measures	SEB annual water data analysis	1	Y	Municipal water departments
Evaluate & implement system methodologies to reduce water-associated energy use		2	Y	
Install water meters	Utilize financial incentive programs. Establish water rate structures based on use. MUNICIPAL-SPECIFIC	1/1		CO state grants
Water usage data improvement	continue making progress to understand water consumption and reduce water system leakage MUNICIPAL-SPECIFIC			
environmentally sound domestic water conservation plans.	What communities do not yet have them?	1	Norwood	
Encourage/incentivize low flow water fixtures	Partially required by building codes & conservation plans	2	Y	CO state government support?
OBJECTIVE: Improve watershed health and security				
Continue development, adoption, implementation and enforcement of municipal drought mitigation plans to reduce water use.	CONTINUE - Outside watering restrictions are effective as seen through water data tracking. ANY MUNICIPALITIES NOT HAVE THEM YET?	1	Y	
Support efforts of organizations (local, regional, and statewide) that focus on water security and watershed ecological health.		1	Y	San Miguel Watershed Coalition; Uncompaghr e Watershed Partnership

[illegible]

Recommendation	EAP Staff Comments	GHG Reduction Potential	Norwood	PARTNERS
OBJECTIVES: Increase the GHG sequestration and water retention capacity of land in the region.	SMC PES component			MANY! Including agricultural producers
Increase yield and health of crops and livestock, through the use of regenerative agricultural and ranching practices.	SMC PES component			
Increase GHG sequestration capacity of trees and plant life in the region.	SMC PES component			
Support San Miguel County in implementing their Payment for EcoSystem Services (PES) Program. https://sanmiguelwc.maps.arcgis.com/apps/MapJournal/index.html?appid=e7b35f74886344afb6931deadea6e4fc	SMC Land Use GHG Inventory - COMPLETE, so list as accomplishment, along with a link to it. PES is SMC program to improve soil health through changes in land management practices. Track benefits through calculations of associated carbon sequestration and other metrics.		Y	
Utilize SMC's Land Use GHG Inventory and PES Program experiences to develop and implement similar land use recommendations for Ouray County	Or implement a similar study specific for Ouray County. FUTURE			
Quantify GHG impacts of carbon sequestration actions and relate them to our GHG emissions inventory.			Y	Comet-Planner? NRCS? SMC PES Program
Increase measures to promote and protect healthy forests.	in their bodies and below the soil surface, protecting certain areas of the forest ensures long term sequestration capacity	2	Y	USFS. Land Trusts. Sheep Mountain Alliance. Citizen groups...
Implement programs, develop incentives and encourage the planting of trees appropriate for specific ecological zones.	Existing initiatives with Extension office, Seas of Trees, & others	3	Y	Extension Office; Seas of Trees; others?
Encourage landscaping according to recommended best practices for local ecological zone	i.e. Ecology Commission guidelines under development; low water use vegetation; etc.	2	Y	Extension Office;

Recommendation	Comments	GHG Reduction	Ophir	PARTNERS
Through continued engagement with community members, elected officials and partner organizations, SEB will advance climate and energy policy to the benefit of the community. Given the dynamic nature of the policy landscape, SEB will continue a formal process for prioritizing and advocating on key issues.				
Continue to participate in regional collaboration of local governments, stakeholders and utilities to drive regional clean energy transition & GHG emissions reduction	Existing through Sneffels Energy Board	4	Y	SEB
Participate in state-level organizations to drive regional clean energy transition & GHG emissions reduction	Continue to participate in CC4CA; & others	1	Y	CC4CA & others
Consider GHG emissions as part of all decision-making processes. Utilize a GHG impact assessment tool, if available, to quantify GHG emission or sequestration impacts.	All governments, organizations, communities use an effective impact assessment tool. Examples topics: Tourist marketing, Affordable housing, new large construction projects, impact of increased flights & tourism... and on the sequestration side: revegetation projects, tree planting, LUC policies, etc.		Y	ICLEI ClearPath Tool
Increase community-level outreach and engagement with implementation of the Climate Action Plan.			Y	WPL, other libraries? Rotary Club? Telluride Institute?
Collaborate between municipalities & organizations on actions when beneficial.			Y	SEB

Recommendation	Comments	GHG Reduction Potential	Ophir	PARTNERS
OBJECTIVE: Increase percentage of electricity provided by renewable energy sources.				
Establish a local renewable energy generation target and implement actions to achieve it.	Do not specify target in CAP.	3	Y	SMPA
Identify and eliminate barriers to local renewable energy generation.	Tri-state cap with SMPA contract; Waive permit fees; Local regulations; Sales Tax Legislation	2	Y	SMPA; WCU
Advance regional grid flexibility to enable a modernize renewable electricity supply.	Include as guidance / input from SEB to SMPA	4	Y	SMPA
Install renewable energy on government facilities.	Examples already exist, what other potential is there?	3	Y	DOLA grants? SMPA
Incentivize, promote & encourage net-metered solar systems on residential & commercial roofs / or ideal pole-mount locations	Encourage RE development consideration in Land Use Codes? Master Plans?	4	Y	SMPA; Solar installers? HOA's?
Encourage community participation in SMPA Totally Green program for electricity not covered by local renewable energy production	Support SMPA in establishing goals & promotion?	4	Y	SMPA; WFE, RCOG, Rotary Club; Telluride Institute; HOA's... Anyone who sends out community newsletters
Work with renewable energy installation businesses to promote RE incentives & financing opportunities.	SMPA; MV; others? CO RENU Loan; Alpine Bank Loan; C-PACE	2	Y	SMPA; Solar installers?

Recommendation	Comments	GHG Reduction Potential	Ophir	PARTNERS
OBJECTIVE: Beneficial Electrification of Buildings				
Transition building mechanical equipment and appliances from fossil fuels to electricity through incentives, outreach and building codes. Include: space and water heating, appliances and other equipment	Focus on New Construction & Retrofits / time of replacement. Existing: SMPA incentives & Trade Ally program	4	Y	SMPA
Encourage transition to / use of geothermal, air source heat pumps, or other available heat exchange technology	Is GSHP applicable in our region? Encourage transition to cold climate air source heat pumps (ccASHP). Expensive?	4	Y	SMPA
Codes for New Construction, Remodels and Additions				
Adopt the 2018 International codes with specific local requirements to exceed minimum standards.	2018 IECC adopted by most jurisdictions (but not yet all). INCLUDE IN ACCOMPLISHMENTS and indicate short-term Municipal-specific actions for those that have not yet adopted.	3	Ophir	
Strengthen existing building efficiency standards and codes to require 10% better than basic code construction, update building energy codes at least every 6 years, and move towards Net Zero Energy buildings. Incentivize Beyond Code construction practices.	Incentivize now, aim toward strengthening codes.	3	Y	
Continue to coordinate regional alignment of energy codes and 'beyond code' preferences	ongoing effort; began 2008... CONTINUE	2	Y	
Facilitate education for contractors, architects and property managers	Ongoing by EAP, could increase in partnership with others	1	Y	Municipal Building Departments
Promote / incentivize optimal control systems and thermostat settings to couple comfort with efficiency	MUNICIPAL-SPECIFIC?	4		BHE; SMPA

Promote / Incentivize building automation systems (such as key card entry activation of electricity in lodging rooms)	Lodging oriented action. MUNICIPAL-SPECIFIC?	?		BHE; SMPA
Natural Gas Efficiency:				
Continue rebate and incentive programs to replace old or inefficient systems/appliances	BHE residential, small business & large commercial programs exist	2	Y	BHE; SMPA
Encourage water tank insulation and pipe wrap on hot water systems	with high R-value insulation & pipe wrap, GHG potential increases	1	Y	BHE; SMPA
Provide technical assistance for natural gas heating alternatives	In process: develop & expands SMPA Trade Ally program	1	Y	SMPA
Improve the energy efficiency performance of existing buildings		4		
Continue to provide and educate community members on energy efficiency and renewable energy incentives available from SMPA, BHE, and municipalities.	BHE programs; SMPA incentives. ALREADY IN PLACE. CONTINUE.	2	Y	BHE; SMPA
Incentivize refrigeration upgrades	Incentivize yes, by SMPA / Tri-State? Green Grants? use of E-Temp equipment?	2	Y	BHE; SMPA
Incentivize, mandate & educate on "Away" mode technology for second homes when unoccupied	EDUCATE; MAKE MANDATORY;	2	Y	
examples: Property Assessed Clean Energy; CO RENEW; Alpine Bank and other specialized financing mechanisms	Expand outreach beyond EAP programs	2	Y	CO government ; banks
Encourage utilities to implement energy use comparison mechanism in monthly billing.	BHE's program was highly effective at increasing interest in energy assessments. Resulted in identification of gas leaks, inefficient controls & more. SMPA implement O-POWER or similar? Encourage BHE to reinstate their program?	4	Y	BHE; SMPA
Reduce energy consumption in rentals, apartments and multifamily buildings		3		

Support building automation to optimize efficiency and effectiveness	MORE APPLICABILITY W LARGE HOMES & COMMERCIAL BUILDINGS	3	Y	Regional trades expertise
Incentivize energy efficiency upgrades in rental properties	TOWN-SPECIFIC; PRIORITIZE LOW INCOME	2		
Incentivize large employers that provide seasonal housing to deploy large-scale energy efficiency upgrades	MV-specific	2		
Develop renter-specific outreach and education campaigns	MUNICIPAL-SPECIFIC?	1		
Anticipate and mitigate likely expansion of air conditioning use in new & existing buildings	Installation of A/C seems to be dictated by new incoming owners to the region, however improving controls & design to mitigate would help.	2		
Avoid or prolong the need for air conditioning via building design and management. Utilize education & outreach to building trades, owners, and facility and property managers.	EAP Property Manager & Building trade education programs could address this.	3	Y	
Encourage high efficiency air conditioning systems as AC use becomes more prevalent	beyond code requirements? increase SMPA incentive requirements?	2	Y	
Coordinate with efforts to adopt high efficiency electric heating systems (i.e. dual ground/air-source heat pumps)	Overlaps with above; SMPA Trade Ally program w/ ccASHP	2	Y	
Others:				
Encourage continued regular "Cost of Service Studies" by SMPA to incentivize and balance current and future priorities (i.e. EVs, fuel switching, time of use, peak shaving, energy efficiency, DSM).	Include	3	Y	SMPA
Continue to host and expand EcoAction Partners Green business program awarding and highlighting business that achieve energy efficiency and sustainability thresholds	EAP Green Business program CONTINUE	1	Y	Chambers of Commerce; Rotary Club; & other business

Recommendation	EAP Staff Comments	GHG Reduction Potential	Ophir	PARTNERS
OBJECTIVE: Decrease vehicle travel				
Continue Outreach & Education efforts around mass transit options.			Y	SMART; Region 10
Subsidize/make bus passes available to commuting workers	Already being done to some extent. More opportunity to work with other big employers in area, SMART, etc.?	2	Y	TSG; other large employers; SMART
Enable more workforce to live near work or improve transit options	Affordable Housing	4	Y	
Reduce in-community vehicle use by residents and visitors.			Y	
OBJECTIVE: Increase use of Electric Vehicles (EVs)				
Improved tracking & analysis of EV station use	SMPA metering per EV station (& not mixed with infrastructure electricity use) would be helpful.	1	Y	SMPA
Provide free EV charging stations	What locations are free? Other locations needed? Market station locations more broadly.	2	Y	SMPA
Increase # EV charging stations when current EV stations are shown to be at peak capacity.	If there is demand, increase in visible/accessible locations (FUTURE ITEM)	2	Y	SMPA
Electrify fleet vehicles when viable.	SMART has plans. Timeframe?	4	Y	SMART; SMPA

Recommendation	EAP Staff Comments	GHG Reduction Potential	Ophir
OBJECTIVE: Decrease GHG emissions per passenger associated with airline flights serving our region			
Educate, Outreach and Encourage travelers to offset their travel with carbon offset programs, emphasizing locally available options.	- Does TEX already promote / market the Carbon offset program available through PCI to passengers? YES, we have coordinated with Pinhead Institute on various occasions during busy activity in a Carbon Offset program since 2017.	1 Y	
Support policies that encourage airlines to increase plane capacity/decrease # of flights.	Market forces / feasibility of influence concerns.		Y
Encourage increased use of biofuel as jet fuels at all regional airports. Support education of passengers about use of biofuels.	Telluride airport initiated use 2021. "TEX will be one of the first Airports that will begin utilizing blended bio and recycled Jet Fuel that meets all aircraft performance standards". More expensive, low supply volume currently. Longer term goal for other regional airports to use. "- Does TEX have a plan to market / communicate with passengers and the broader community TEX's use of biofuel? YES, we are preparing marketing and communication with the help of our fuel supplier AVFUEL. As a means of educating the public & increasing public support? YES - Is TEX using SAF for all of the Jet-A fuel provided at the airport? NO Or just a percentage at this point? At this time our goal is to provide 25% of our fuel sales as SAF. We are balancing costs and availability. We are proud to say that we will be one of the first Airports in Colorado that provide SAF.	4/1 Y	

PARTNERS

Regional airports; TEX

Regional airports; TEX

Regional airports; TEX

Regional airports; TEX

Recommendation	EAP Staff Comments	GHG Reduction Potential	Ophir	PARTNERS
OBJECTIVE: Reduce the overall volume of waste transported to landfills. Reduce, Reuse, Recycle, Repurpose and Composting.				
Continue community outreach, education & engagement efforts to reduce waste and improve effective utilization of recycling services and composting options.	Decrease paper consumption; Reduce single-use plastics; & more fall under this broader category	2 Y		Composting businesses or programs, such as Dirty Sturdy's
Require waste haulers to improve available waste volume data.	State-level requirements for WM to provide data? Include in municipal contracts at time of renewal.	2 Y		
Expand Plastic Film Upcycling Program and other recycling programming	EAP Plastic Film program growing.	2 Y		
Continue hazardous waste collection services and increase availability to other communities	SMC annual collection. Ouray County?	2/1 Y		
Decrease festival & event waste through waste reduction, resource recovery & composting. Require contracts for services where appropriate.	Telluride requires for most festivals. Ridgway volunteers manage (improved composting methodology needed).	2 Y		Festival & event owners & managers
Support restaurants and businesses with waste reduction.	Zero Waste checklist: include in EAP Green Business Program. Collaborate with partners for greater outreach	2 Y		
Encourage waste haulers to use clean vehicles.		3 Y		Waste Management; Bruin; 3XM
OBJECTIVE: Increase Composting in the region.	Potential to reduce 65% of landfill waste through composting			
Increase community compost programs and individual residential composters, and encourage participation in composting programs.	FUTURE potential to require composting, but must first increase availability & viability of use	2 Y		

Recommendation	EAP Staff Comments	GHG Reduction Potential	Ophir	PARTNERS
OBJECTIVE: Reduce Water Consumption from Municipal and Industrial Uses				
Continue to track water and wastewater use data, associated energy use, & impacts of conservation / drought measures	SEB annual water data analysis	1	Y	Municipal water departments
Evaluate & implement system methodologies to reduce water-associated energy use		2	Y	
Install water meters	Utilize financial incentive programs. Establish water rate structures based on use. MUNICIPAL-SPECIFIC	1/1	Ophir	CO state grants
Water usage data improvement	continue making progress to understand water consumption and reduce water system leakage MUNICIPAL-SPECIFIC			
environmentally sound domestic water conservation plans.	What communities do not yet have them?	1	Ophir	
Encourage/incentivize low flow water fixtures	Partially required by building codes & conservation plans	2	Y	CO state government support?
OBJECTIVE: Improve watershed health and security				
Continue development, adoption, implementation and enforcement of municipal drought mitigation plans to reduce water use.	CONTINUE - Outside watering restrictions are effective as seen through water data tracking. ANY MUNICIPALITIES NOT HAVE THEM YET?	1	Y	
Support efforts of organizations (local, regional, and statewide) that focus on water security and watershed ecological health.		1	Y	San Miguel Watershed Coalition; Uncompaghr e Watershed Partnership

[illegible]

Recommendation	EAP Staff Comments	GHG Reduction Potential	Ophir	PARTNERS
OBJECTIVES: Increase the GHG sequestration and water retention capacity of land in the region.	SMC PES component			MANY! Including agricultural producers
Increase yield and health of crops and livestock, through the use of regenerative agricultural and ranching practices.	SMC PES component			
Increase GHG sequestration capacity of trees and plant life in the region.	SMC PES component			
Support San Miguel County in implementing their Payment for EcoSystem Services (PES) Program. https://sanmiguelwc.maps.arcgis.com/apps/MapJournal/index.html?appid=e7b35f74886344afb6931deadea6e4fc	SMC Land Use GHG Inventory - COMPLETE, so list as accomplishment, along with a link to it. PES is SMC program to improve soil health through changes in land management practices. Track benefits through calculations of associated carbon sequestration and other metrics.		Y	
Utilize SMC's Land Use GHG Inventory and PES Program experiences to develop and implement similar land use recommendations for Ouray County	Or implement a similar study specific for Ouray County. FUTURE			
Quantify GHG impacts of carbon sequestration actions and relate them to our GHG emissions inventory.			Y	Comet-Planner? NRCS? SMC PES Program
Increase measures to promote and protect healthy forests.	in their bodies and below the soil surface, protecting certain areas of the forest ensures long term sequestration capacity	2	Y	USFS. Land Trusts. Sheep Mountain Alliance. Citizen groups...
Implement programs, develop incentives and encourage the planting of trees appropriate for specific ecological zones.	Existing initiatives with Extension office, Seas of Trees, & others	3	Y	Extension Office; Seas of Trees; others?
Encourage landscaping according to recommended best practices for local ecological zone	i.e. Ecology Commission guidelines under development; low water use vegetation; etc.	2	Y	Extension Office;

Recommendation	Comments	GHG Reduction	Ouray County	PARTNERS
Through continued engagement with community members, elected officials and partner organizations, SEB will advance climate and energy policy to the benefit of the community. Given the dynamic nature of the policy landscape, SEB will continue a formal process for prioritizing and advocating on key issues.				
Continue to participate in regional collaboration of local governments, stakeholders and utilities to drive regional clean energy transition & GHG emissions reduction	Existing through Sneffels Energy Board	4	Y	SEB
Participate in state-level organizations to drive regional clean energy transition & GHG emissions reduction	Continue to participate in CC4CA; & others	1	Y	CC4CA & others
Consider GHG emissions as part of all decision-making processes. Utilize a GHG impact assessment tool, if available, to quantify GHG emission or sequestration impacts.	All governments, organizations, communities use an effective impact assessment tool. Examples topics: Tourist marketing, Affordable housing, new large construction projects, impact of increased flights & tourism... and on the sequestration side: revegetation projects, tree planting, LUC policies, etc.		Y	ICLEI ClearPath Tool
Increase community-level outreach and engagement with implementation of the Climate Action Plan.			Y	WPL, other libraries? Rotary Club? Telluride Institute?
Collaborate between municipalities & organizations on actions when beneficial.			Y	SEB

Recommendation	Comments	GHG Reduction Potential	Ouray County	PARTNERS
OBJECTIVE: Increase percentage of electricity provided by renewable energy sources.				
Establish a local renewable energy generation target and implement actions to achieve it.	Do not specify target in CAP.	3	Y	SMPA
Identify and eliminate barriers to local renewable energy generation.	Tri-state cap with SMPA contract; Waive permit fees; Local regulations; Sales Tax Legislation	2	Y	SMPA; WCU
Advance regional grid flexibility to enable a modernize renewable electricity supply.	Include as guidance / input from SEB to SMPA	4	Y	SMPA
Install renewable energy on government facilities.	Examples already exist, what other potential is there?	3	Y	DOLA grants? SMPA
Incentivize, promote & encourage net-metered solar systems on residential & commercial roofs / or ideal pole-mount locations	Encourage RE development consideration in Land Use Codes? Master Plans?	4	Y	SMPA; Solar installers? HOA's?
Encourage community participation in SMPA Totally Green program for electricity not covered by local renewable energy production	Support SMPA in establishing goals & promotion?	4	Y	SMPA; WFE, RCOG, Rotary Club; Telluride Institute; HOA's... Anyone who sends out community newsletters
Work with renewable energy installation businesses to promote RE incentives & financing opportunities.	SMPA; MV; others? CO RENU Loan; Alpine Bank Loan; C-PACE	2	Y	SMPA; Solar installers?

Recommendation	Comments	GHG Reduction Potential	Ouray County	PARTNERS
OBJECTIVE: Beneficial Electrification of Buildings				
Transition building mechanical equipment and appliances from fossil fuels to electricity through incentives, outreach and building codes. Include: space and water heating, appliances and other equipment	Focus on New Construction & Retrofits / time of replacement. Existing: SMPA incentives & Trade Ally program	4	Y	SMPA
Encourage transition to / use of geothermal, air source heat pumps, or other available heat exchange technology	Is GSHP applicable in our region? Encourage transition to cold climate air source heat pumps (ccASHP). Expensive?	4	Y	SMPA
Codes for New Construction, Remodels and Additions				
Adopt the 2018 International codes with specific local requirements to exceed minimum standards.	2018 IECC adopted by most jurisdictions (but not yet all). INCLUDE IN ACCOMPLISHMENTS and indicate short-term Municipal-specific actions for those that have not yet adopted.	3		
Strengthen existing building efficiency standards and codes to require 10% better than basic code construction, update building energy codes at least every 6 years, and move towards Net Zero Energy buildings. Incentivize Beyond Code construction practices.	Incentivize now, aim toward strengthening codes.	3	Y	
Continue to coordinate regional alignment of energy codes and 'beyond code' preferences	ongoing effort; began 2008... CONTINUE	2	Y	
Facilitate education for contractors, architects and property managers	Ongoing by EAP, could increase in partnership with others	1	Y	Municipal Building Departments
Promote / incentivize optimal control systems and thermostat settings to couple comfort with efficiency	MUNICIPAL-SPECIFIC?	4		BHE; SMPA

Promote / Incentivize building automation systems (such as key card entry activation of electricity in lodging rooms)	Lodging oriented action. MUNICIPAL-SPECIFIC?	?		BHE; SMPA
Natural Gas Efficiency:				
Continue rebate and incentive programs to replace old or inefficient systems/appliances	BHE residential, small business & large commercial programs exist	2	Y	BHE; SMPA
Encourage water tank insulation and pipe wrap on hot water systems	with high R-value insulation & pipe wrap, GHG potential increases	1	Y	BHE; SMPA
Provide technical assistance for natural gas heating alternatives	In process: develop & expands SMPA Trade Ally program	1	Y	SMPA
Improve the energy efficiency performance of existing buildings		4		
Continue to provide and educate community members on energy efficiency and renewable energy incentives available from SMPA, BHE, and municipalities.	BHE programs; SMPA incentives. ALREADY IN PLACE. CONTINUE.	2	Y	BHE; SMPA
Incentivize refrigeration upgrades	Incentivize yes, by SMPA / Tri-State? Green Grants? use of E-Temp equipment?	2	Y	BHE; SMPA
Incentivize, mandate & educate on "Away" mode technology for second homes when unoccupied	EDUCATE; MAKE MANDATORY;	2	Y	
examples: Property Assessed Clean Energy; CO RENEW; Alpine Bank and other specialized financing mechanisms	Expand outreach beyond EAP programs	2	Y	CO government ; banks
Encourage utilities to implement energy use comparison mechanism in monthly billing.	BHE's program was highly effective at increasing interest in energy assessments. Resulted in identification of gas leaks, inefficient controls & more. SMPA implement O-POWER or similar? Encourage BHE to reinstate their program?	4	Y	BHE; SMPA
Reduce energy consumption in rentals, apartments and multifamily buildings		3		

Support building automation to optimize efficiency and effectiveness	MORE APPLICABILITY W LARGE HOMES & COMMERCIAL BUILDINGS	3	Y	Regional trades expertise
Incentivize energy efficiency upgrades in rental properties	TOWN-SPECIFIC; PRIORITIZE LOW INCOME	2		
Incentivize large employers that provide seasonal housing to deploy large-scale energy efficiency upgrades	MV-specific	2		
Develop renter-specific outreach and education campaigns	MUNICIPAL-SPECIFIC?	1		
Anticipate and mitigate likely expansion of air conditioning use in new & existing buildings	Installation of A/C seems to be dictated by new incoming owners to the region, however improving controls & design to mitigate would help.	2		
Avoid or prolong the need for air conditioning via building design and management. Utilize education & outreach to building trades, owners, and facility and property managers.	EAP Property Manager & Building trade education programs could address this.	3	Y	
Encourage high efficiency air conditioning systems as AC use becomes more prevalent	beyond code requirements? increase SMPA incentive requirements?	2	Y	
Coordinate with efforts to adopt high efficiency electric heating systems (i.e. dual ground/air-source heat pumps)	Overlaps with above; SMPA Trade Ally program w/ ccASHP	2	Y	
Others:				
Encourage continued regular "Cost of Service Studies" by SMPA to incentivize and balance current and future priorities (i.e. EVs, fuel switching, time of use, peak shaving, energy efficiency, DSM).	Include	3	Y	SMPA
Continue to host and expand EcoAction Partners Green business program awarding and highlighting business that achieve energy efficiency and sustainability thresholds	EAP Green Business program CONTINUE	1	Y	Chambers of Commerce; Rotary Club; & other business

Recommendation	EAP Staff Comments	GHG Reduction Potential	Ouray County	PARTNERS
OBJECTIVE: Decrease vehicle travel				
Continue Outreach & Education efforts around mass transit options.			Y	SMART; Region 10
Subsidize/make bus passes available to commuting workers	Already being done to some extent. More opportunity to work with other big employers in area, SMART, etc.?	2	Y	TSG; other large employers; SMART
Enable more workforce to live near work or improve transit options	Affordable Housing	4	Y	
Reduce in-community vehicle use by residents and visitors.			Y	
OBJECTIVE: Increase use of Electric Vehicles (EVs)				
Improved tracking & analysis of EV station use	SMPA metering per EV station (& not mixed with infrastructure electricity use) would be helpful.	1	Y	SMPA
Provide free EV charging stations	What locations are free? Other locations needed? Market station locations more broadly.	2	Y	SMPA
Increase # EV charging stations when current EV stations are shown to be at peak capacity.	If there is demand, increase in visible/accessible locations (FUTURE ITEM)	2	Y	SMPA
Electrify fleet vehicles when viable.	SMART has plans. Timeframe?	4	Y	SMART; SMPA

[illegible]

Recommendation	EAP Staff Comments	GHG Reduction Potential	Ouray County
OBJECTIVE: Decrease GHG emissions per passenger associated with airline flights serving our region			
Educate, Outreach and Encourage travelers to offset their travel with carbon offset programs, emphasizing locally available options.	- Does TEX already promote / market the Carbon offset program available through PCI to passengers? YES, we have coordinated with Pinhead Institute on various occasions during busy activity in a Carbon Offset program since 2017.	1 Y	
Support policies that encourage airlines to increase plane capacity/decrease # of flights.	Market forces / feasibility of influence concerns.		Y
Encourage increased use of biofuel as jet fuels at all regional airports. Support education of passengers about use of biofuels.	Telluride airport initiated use 2021. "TEX will be one of the first Airports that will begin utilizing blended bio and recycled Jet Fuel that meets all aircraft performance standards". More expensive, low supply volume currently. Longer term goal for other regional airports to use. "- Does TEX have a plan to market / communicate with passengers and the broader community TEX's use of biofuel? YES, we are preparing marketing and communication with the help of our fuel supplier AVFUEL. As a means of educating the public & increasing public support? YES - Is TEX using SAF for all of the Jet-A fuel provided at the airport? NO Or just a percentage at this point? At this time our goal is to provide 25% of our fuel sales as SAF. We are balancing costs and availability. We are proud to say that we will be one of the first Airports in Colorado that provide SAF.	4/1	Y

PARTNERS

Regional airports; TEX

Regional airports; TEX

Regional airports; TEX

Regional airports; TEX

Recommendation	EAP Staff Comments	GHG Reduction Potential	Ouray County	PARTNERS
OBJECTIVE: Reduce the overall volume of waste transported to landfills. Reduce, Reuse, Recycle, Repurpose and Composting.				
Continue community outreach, education & engagement efforts to reduce waste and improve effective utilization of recycling services and composting options.	Decrease paper consumption; Reduce single-use plastics; & more fall under this broader category	2 Y		Composting businesses or programs, such as Dirty Sturdy's
Require waste haulers to improve available waste volume data.	State-level requirements for WM to provide data? Include in municipal contracts at time of renewal.	2 Y		
Expand Plastic Film Upcycling Program and other recycling programming	EAP Plastic Film program growing.	2 Y		
Continue hazardous waste collection services and increase availability to other communities	SMC annual collection. Ouray County?	2/1 Y		
Decrease festival & event waste through waste reduction, resource recovery & composting. Require contracts for services where appropriate.	Telluride requires for most festivals. Ridgway volunteers manage (improved composting methodology needed).	2 Y		Festival & event owners & managers
Support restaurants and businesses with waste reduction.	Zero Waste checklist: include in EAP Green Business Program. Collaborate with partners for greater outreach	2 Y		
Encourage waste haulers to use clean vehicles.		3 Y		Waste Management; Bruin; 3XM
OBJECTIVE: Increase Composting in the region.	Potential to reduce 65% of landfill waste through composting			
Increase community compost programs and individual residential composters, and encourage participation in composting programs.	FUTURE potential to require composting, but must first increase availability & viability of use	2 Y		

Recommendation	EAP Staff Comments	GHG Reduction Potential	Ouray County	PARTNERS
OBJECTIVE: Reduce Water Consumption from Municipal and Industrial Uses				
Continue to track water and wastewater use data, associated energy use, & impacts of conservation / drought measures	SEB annual water data analysis	1	Y	Municipal water departments
Evaluate & implement system methodologies to reduce water-associated energy use		2	Y	
Install water meters	Utilize financial incentive programs. Establish water rate structures based on use. MUNICIPAL-SPECIFIC	1/1		CO state grants
Water usage data improvement	continue making progress to understand water consumption and reduce water system leakage MUNICIPAL-SPECIFIC			
environmentally sound domestic water conservation plans.	What communities do not yet have them?	1	N/A	
Encourage/incentivize low flow water fixtures	Partially required by building codes & conservation plans	2	Y	CO state government support?
OBJECTIVE: Improve watershed health and security				
Continue development, adoption, implementation and enforcement of municipal drought mitigation plans to reduce water use.	CONTINUE - Outside watering restrictions are effective as seen through water data tracking. ANY MUNICIPALITIES NOT HAVE THEM YET?	1	Y	
Support efforts of organizations (local, regional, and statewide) that focus on water security and watershed ecological health.		1	Y	San Miguel Watershed Coalition; Uncompaghr e Watershed Partnership

[illegible]

Recommendation	EAP Staff Comments	GHG Reduction Potential	Ouray County	PARTNERS
OBJECTIVES: Increase the GHG sequestration and water retention capacity of land in the region.	SMC PES component			MANY! Including agricultural producers
Increase yield and health of crops and livestock, through the use of regenerative agricultural and ranching practices.	SMC PES component			
Increase GHG sequestration capacity of trees and plant life in the region.	SMC PES component			
Support San Miguel County in implementing their Payment for EcoSystem Services (PES) Program. https://sanmiguelwc.maps.arcgis.com/apps/MapJournal/index.html?appid=e7b35f74886344afb6931deadea6e4fc	SMC Land Use GHG Inventory - COMPLETE, so list as accomplishment, along with a link to it. PES is SMC program to improve soil health through changes in land management practices. Track benefits through calculations of associated carbon sequestration and other metrics.		Y	
Utilize SMC's Land Use GHG Inventory and PES Program experiences to develop and implement similar land use recommendations for Ouray County	Or implement a similar study specific for Ouray County. FUTURE		OURAY COUNTY - FUTURE	
Quantify GHG impacts of carbon sequestration actions and relate them to our GHG emissions inventory.			Y	Comet-Planner? NRCS? SMC PES Program
Increase measures to promote and protect healthy forests.	in their bodies and below the soil surface, protecting certain areas of the forest ensures long term sequestration capacity	2	Y	USFS. Land Trusts. Sheep Mountain Alliance. Citizen groups...
Implement programs, develop incentives and encourage the planting of trees appropriate for specific ecological zones.	Existing initiatives with Extension office, Seas of Trees, & others	3	Y	Extension Office; Seas of Trees; others?
Encourage landscaping according to recommended best practices for local ecological zone	i.e. Ecology Commission guidelines under development; low water use vegetation; etc.	2	Y	Extension Office;

Recommendation	Comments	GHG Reduction	Ouray County	PARTNERS
Through continued engagement with community members, elected officials and partner organizations, SEB will advance climate and energy policy to the benefit of the community. Given the dynamic nature of the policy landscape, SEB will continue a formal process for prioritizing and advocating on key issues.				
Continue to participate in regional collaboration of local governments, stakeholders and utilities to drive regional clean energy transition & GHG emissions reduction	Existing through Sneffels Energy Board	4	Y	SEB
Participate in state-level organizations to drive regional clean energy transition & GHG emissions reduction	Continue to participate in CC4CA; & others	1	Y	CC4CA & others
Consider GHG emissions as part of all decision-making processes. Utilize a GHG impact assessment tool, if available, to quantify GHG emission or sequestration impacts.	All governments, organizations, communities use an effective impact assessment tool. Examples topics: Tourist marketing, Affordable housing, new large construction projects, impact of increased flights & tourism... and on the sequestration side: revegetation projects, tree planting, LUC policies, etc.		Y	ICLEI ClearPath Tool
Increase community-level outreach and engagement with implementation of the Climate Action Plan.			Y	WPL, other libraries? Rotary Club? Telluride Institute?
Collaborate between municipalities & organizations on actions when beneficial.			Y	SEB

Recommendation	Comments	GHG Reduction Potential	Ouray County	PARTNERS
OBJECTIVE: Increase percentage of electricity provided by renewable energy sources.				
Establish a local renewable energy generation target and implement actions to achieve it.	Do not specify target in CAP.	3	Y	SMPA
Identify and eliminate barriers to local renewable energy generation.	Tri-state cap with SMPA contract; Waive permit fees; Local regulations; Sales Tax Legislation	2	Y	SMPA; WCU
Advance regional grid flexibility to enable a modernize renewable electricity supply.	Include as guidance / input from SEB to SMPA	4	Y	SMPA
Install renewable energy on government facilities.	Examples already exist, what other potential is there?	3	Y	DOLA grants? SMPA
Incentivize, promote & encourage net-metered solar systems on residential & commercial roofs / or ideal pole-mount locations	Encourage RE development consideration in Land Use Codes? Master Plans?	4	Y	SMPA; Solar installers? HOA's?
Encourage community participation in SMPA Totally Green program for electricity not covered by local renewable energy production	Support SMPA in establishing goals & promotion?	4	Y	SMPA; WFE, RCOG, Rotary Club; Telluride Institute; HOA's... Anyone who sends out community newsletters
Work with renewable energy installation businesses to promote RE incentives & financing opportunities.	SMPA; MV; others? CO RENU Loan; Alpine Bank Loan; C-PACE	2	Y	SMPA; Solar installers?

Recommendation	Comments	GHG Reduction Potential	Ouray County	PARTNERS
OBJECTIVE: Beneficial Electrification of Buildings				
Transition building mechanical equipment and appliances from fossil fuels to electricity through incentives, outreach and building codes. Include: space and water heating, appliances and other equipment	Focus on New Construction & Retrofits / time of replacement. Existing: SMPA incentives & Trade Ally program	4	Y	SMPA
Encourage transition to / use of geothermal, air source heat pumps, or other available heat exchange technology	Is GSHP applicable in our region? Encourage transition to cold climate air source heat pumps (ccASHP). Expensive?	4	Y	SMPA
Codes for New Construction, Remodels and Additions				
Adopt the 2018 International codes with specific local requirements to exceed minimum standards.	2018 IECC adopted by most jurisdictions (but not yet all). INCLUDE IN ACCOMPLISHMENTS and indicate short-term Municipal-specific actions for those that have not yet adopted.	3		
Strengthen existing building efficiency standards and codes to require 10% better than basic code construction, update building energy codes at least every 6 years, and move towards Net Zero Energy buildings. Incentivize Beyond Code construction practices.	Incentivize now, aim toward strengthening codes.	3	Y	
Continue to coordinate regional alignment of energy codes and 'beyond code' preferences	ongoing effort; began 2008... CONTINUE	2	Y	
Facilitate education for contractors, architects and property managers	Ongoing by EAP, could increase in partnership with others	1	Y	Municipal Building Departments
Promote / incentivize optimal control systems and thermostat settings to couple comfort with efficiency	MUNICIPAL-SPECIFIC?	4		BHE; SMPA

Promote / Incentivize building automation systems (such as key card entry activation of electricity in lodging rooms)	Lodging oriented action. MUNICIPAL-SPECIFIC?	?		BHE; SMPA
Natural Gas Efficiency:				
Continue rebate and incentive programs to replace old or inefficient systems/appliances	BHE residential, small business & large commercial programs exist	2	Y	BHE; SMPA
Encourage water tank insulation and pipe wrap on hot water systems	with high R-value insulation & pipe wrap, GHG potential increases	1	Y	BHE; SMPA
Provide technical assistance for natural gas heating alternatives	In process: develop & expands SMPA Trade Ally program	1	Y	SMPA
Improve the energy efficiency performance of existing buildings		4		
Continue to provide and educate community members on energy efficiency and renewable energy incentives available from SMPA, BHE, and municipalities.	BHE programs; SMPA incentives. ALREADY IN PLACE. CONTINUE.	2	Y	BHE; SMPA
Incentivize refrigeration upgrades	Incentivize yes, by SMPA / Tri-State? Green Grants? use of E-Temp equipment?	2	Y	BHE; SMPA
Incentivize, mandate & educate on "Away" mode technology for second homes when unoccupied	EDUCATE; MAKE MANDATORY;	2	Y	
examples: Property Assessed Clean Energy; CO RENEW; Alpine Bank and other specialized financing mechanisms	Expand outreach beyond EAP programs	2	Y	CO government ; banks
Encourage utilities to implement energy use comparison mechanism in monthly billing.	BHE's program was highly effective at increasing interest in energy assessments. Resulted in identification of gas leaks, inefficient controls & more. SMPA implement O-POWER or similar? Encourage BHE to reinstate their program?	4	Y	BHE; SMPA
Reduce energy consumption in rentals, apartments and multifamily buildings		3		

Support building automation to optimize efficiency and effectiveness	MORE APPLICABILITY W LARGE HOMES & COMMERCIAL BUILDINGS	3	Y	Regional trades expertise
Incentivize energy efficiency upgrades in rental properties	TOWN-SPECIFIC; PRIORITIZE LOW INCOME	2		
Incentivize large employers that provide seasonal housing to deploy large-scale energy efficiency upgrades	MV-specific	2		
Develop renter-specific outreach and education campaigns	MUNICIPAL-SPECIFIC?	1		
Anticipate and mitigate likely expansion of air conditioning use in new & existing buildings	Installation of A/C seems to be dictated by new incoming owners to the region, however improving controls & design to mitigate would help.	2		
Avoid or prolong the need for air conditioning via building design and management. Utilize education & outreach to building trades, owners, and facility and property managers.	EAP Property Manager & Building trade education programs could address this.	3	Y	
Encourage high efficiency air conditioning systems as AC use becomes more prevalent	beyond code requirements? increase SMPA incentive requirements?	2	Y	
Coordinate with efforts to adopt high efficiency electric heating systems (i.e. dual ground/air-source heat pumps)	Overlaps with above; SMPA Trade Ally program w/ ccASHP	2	Y	
Others:				
Encourage continued regular "Cost of Service Studies" by SMPA to incentivize and balance current and future priorities (i.e. EVs, fuel switching, time of use, peak shaving, energy efficiency, DSM).	Include	3	Y	SMPA
Continue to host and expand EcoAction Partners Green business program awarding and highlighting business that achieve energy efficiency and sustainability thresholds	EAP Green Business program CONTINUE	1	Y	Chambers of Commerce; Rotary Club; & other business

Recommendation	EAP Staff Comments	GHG Reduction Potential	Ouray County	PARTNERS
OBJECTIVE: Decrease vehicle travel				
Continue Outreach & Education efforts around mass transit options.			Y	SMART; Region 10
Subsidize/make bus passes available to commuting workers	Already being done to some extent. More opportunity to work with other big employers in area, SMART, etc.?	2	Y	TSG; other large employers; SMART
Enable more workforce to live near work or improve transit options	Affordable Housing	4	Y	
Reduce in-community vehicle use by residents and visitors.			Y	
OBJECTIVE: Increase use of Electric Vehicles (EVs)				
Improved tracking & analysis of EV station use	SMPA metering per EV station (& not mixed with infrastructure electricity use) would be helpful.	1	Y	SMPA
Provide free EV charging stations	What locations are free? Other locations needed? Market station locations more broadly.	2	Y	SMPA
Increase # EV charging stations when current EV stations are shown to be at peak capacity.	If there is demand, increase in visible/accessible locations (FUTURE ITEM)	2	Y	SMPA
Electrify fleet vehicles when viable.	SMART has plans. Timeframe?	4	Y	SMART; SMPA

Recommendation	EAP Staff Comments	GHG Reduction Potential	Ouray County
OBJECTIVE: Decrease GHG emissions per passenger associated with airline flights serving our region			
Educate, Outreach and Encourage travelers to offset their travel with carbon offset programs, emphasizing locally available options.	- Does TEX already promote / market the Carbon offset program available through PCI to passengers? YES, we have coordinated with Pinhead Institute on various occasions during busy activity in a Carbon Offset program since 2017.	1	Y
Support policies that encourage airlines to increase plane capacity/decrease # of flights.	Market forces / feasibility of influence concerns.		Y
Encourage increased use of biofuel as jet fuels at all regional airports. Support education of passengers about use of biofuels.	Telluride airport initiated use 2021. "TEX will be one of the first Airports that will begin utilizing blended bio and recycled Jet Fuel that meets all aircraft performance standards". More expensive, low supply volume currently. Longer term goal for other regional airports to use. "- Does TEX have a plan to market / communicate with passengers and the broader community TEX's use of biofuel? YES, we are preparing marketing and communication with the help of our fuel supplier AVFUEL. As a means of educating the public & increasing public support? YES - Is TEX using SAF for all of the Jet-A fuel provided at the airport? NO Or just a percentage at this point? At this time our goal is to provide 25% of our fuel sales as SAF. We are balancing costs and availability. We are proud to say that we will be one of the first Airports in Colorado that provide SAF.	4/1	Y

PARTNERS

Regional airports; TEX

Regional airports; TEX

Regional airports; TEX

Regional airports; TEX

Recommendation	EAP Staff Comments	GHG Reduction Potential	Ouray County	PARTNERS
OBJECTIVE: Reduce the overall volume of waste transported to landfills. Reduce, Reuse, Recycle, Repurpose and Composting.				
Continue community outreach, education & engagement efforts to reduce waste and improve effective utilization of recycling services and composting options.	Decrease paper consumption; Reduce single-use plastics; & more fall under this broader category	2 Y		Composting businesses or programs, such as Dirty Sturdy's
Require waste haulers to improve available waste volume data.	State-level requirements for WM to provide data? Include in municipal contracts at time of renewal.	2 Y		
Expand Plastic Film Upcycling Program and other recycling programming	EAP Plastic Film program growing.	2 Y		
Continue hazardous waste collection services and increase availability to other communities	SMC annual collection. Ouray County?	2/1 Y		
Decrease festival & event waste through waste reduction, resource recovery & composting. Require contracts for services where appropriate.	Telluride requires for most festivals. Ridgway volunteers manage (improved composting methodology needed).	2 Y		Festival & event owners & managers
Support restaurants and businesses with waste reduction.	Zero Waste checklist: include in EAP Green Business Program. Collaborate with partners for greater outreach	2 Y		
Encourage waste haulers to use clean vehicles.		3 Y		Waste Management; Bruin; 3XM
OBJECTIVE: Increase Composting in the region.	Potential to reduce 65% of landfill waste through composting			
Increase community compost programs and individual residential composters, and encourage participation in composting programs.	FUTURE potential to require composting, but must first increase availability & viability of use	2 Y		

Recommendation	EAP Staff Comments	GHG Reduction Potential	Ouray County	PARTNERS
OBJECTIVE: Reduce Water Consumption from Municipal and Industrial Uses				
Continue to track water and wastewater use data, associated energy use, & impacts of conservation / drought measures	SEB annual water data analysis	1	Y	Municipal water departments
Evaluate & implement system methodologies to reduce water-associated energy use		2	Y	
Install water meters	Utilize financial incentive programs. Establish water rate structures based on use. MUNICIPAL-SPECIFIC	1/1		CO state grants
Water usage data improvement	continue making progress to understand water consumption and reduce water system leakage MUNICIPAL-SPECIFIC			
environmentally sound domestic water conservation plans.	What communities do not yet have them?	1	N/A	
Encourage/incentivize low flow water fixtures	Partially required by building codes & conservation plans	2	Y	CO state government support?
OBJECTIVE: Improve watershed health and security				
Continue development, adoption, implementation and enforcement of municipal drought mitigation plans to reduce water use.	CONTINUE - Outside watering restrictions are effective as seen through water data tracking. ANY MUNICIPALITIES NOT HAVE THEM YET?	1	Y	
Support efforts of organizations (local, regional, and statewide) that focus on water security and watershed ecological health.		1	Y	San Miguel Watershed Coalition; Uncompaghr e Watershed Partnership

[illegible]

Recommendation	EAP Staff Comments	GHG Reduction Potential	Ouray County	PARTNERS
OBJECTIVES: Increase the GHG sequestration and water retention capacity of land in the region.	SMC PES component			MANY! Including agricultural producers
Increase yield and health of crops and livestock, through the use of regenerative agricultural and ranching practices.	SMC PES component			
Increase GHG sequestration capacity of trees and plant life in the region.	SMC PES component			
Support San Miguel County in implementing their Payment for EcoSystem Services (PES) Program. https://sanmiguelwc.maps.arcgis.com/apps/MapJournal/index.html?appid=e7b35f74886344afb6931deadea6e4fc	SMC Land Use GHG Inventory - COMPLETE, so list as accomplishment, along with a link to it. PES is SMC program to improve soil health through changes in land management practices. Track benefits through calculations of associated carbon sequestration and other metrics.		Y	
Utilize SMC's Land Use GHG Inventory and PES Program experiences to develop and implement similar land use recommendations for Ouray County	Or implement a similar study specific for Ouray County. FUTURE		OURAY COUNTY - FUTURE	
Quantify GHG impacts of carbon sequestration actions and relate them to our GHG emissions inventory.			Y	Comet-Planner? NRCS? SMC PES Program
Increase measures to promote and protect healthy forests.	in their bodies and below the soil surface, protecting certain areas of the forest ensures long term sequestration capacity	2	Y	USFS. Land Trusts. Sheep Mountain Alliance. Citizen groups...
Implement programs, develop incentives and encourage the planting of trees appropriate for specific ecological zones.	Existing initiatives with Extension office, Seas of Trees, & others	3	Y	Extension Office; Seas of Trees; others?
Encourage landscaping according to recommended best practices for local ecological zone	i.e. Ecology Commission guidelines under development; low water use vegetation; etc.	2	Y	Extension Office;

[illegible]

Recommendation	Comments	GHG Reduction	Ridgway	PARTNERS
Through continued engagement with community members, elected officials and partner organizations, SEB will advance climate and energy policy to the benefit of the community. Given the dynamic nature of the policy landscape, SEB will continue a formal process for prioritizing and advocating on key issues.				
Continue to participate in regional collaboration of local governments, stakeholders and utilities to drive regional clean energy transition & GHG emissions reduction	Existing through Sneffels Energy Board	4	Y	SEB
Participate in state-level organizations to drive regional clean energy transition & GHG emissions reduction	Continue to participate in CC4CA; & others	1	Y	CC4CA & others
Consider GHG emissions as part of all decision-making processes. Utilize a GHG impact assessment tool, if available, to quantify GHG emission or sequestration impacts.	All governments, organizations, communities use an effective impact assessment tool. Examples topics: Tourist marketing, Affordable housing, new large construction projects, impact of increased flights & tourism... and on the sequestration side: revegetation projects, tree planting, LUC policies, etc.		Y	ICLEI ClearPath Tool
Increase community-level outreach and engagement with implementation of the Climate Action Plan.			Y	WPL, other libraries? Rotary Club? Telluride Institute?
Collaborate between municipalities & organizations on actions when beneficial.			Y	SEB

Recommendation	Comments	GHG Reduction Potential	Ridgway	PARTNERS
OBJECTIVE: Increase percentage of electricity provided by renewable energy sources.				
Establish a local renewable energy generation target and implement actions to achieve it.	Do not specify target in CAP.	3	Y	SMPA
Identify and eliminate barriers to local renewable energy generation.	Tri-state cap with SMPA contract; Waive permit fees; Local regulations; Sales Tax Legislation	2	Y	SMPA; WCU
Advance regional grid flexibility to enable a modernize renewable electricity supply.	Include as guidance / input from SEB to SMPA	4	Y	SMPA
Install renewable energy on government facilities.	Examples already exist, what other potential is there?	3	Y	DOLA grants? SMPA
Incentivize, promote & encourage net-metered solar systems on residential & commercial roofs / or ideal pole-mount locations	Encourage RE development consideration in Land Use Codes? Master Plans?	4	Y	SMPA; Solar installers? HOA's?
Encourage community participation in SMPA Totally Green program for electricity not covered by local renewable energy production	Support SMPA in establishing goals & promotion?	4	Y	SMPA; WFE, RCOG, Rotary Club; Telluride Institute; HOA's... Anyone who sends out community newsletters
Work with renewable energy installation businesses to promote RE incentives & financing opportunities.	SMPA; MV; others? CO RENU Loan; Alpine Bank Loan; C-PACE	2	Y	SMPA; Solar installers?

Recommendation	Comments	GHG Reduction Potential	Ridgway	PARTNERS
OBJECTIVE: Beneficial Electrification of Buildings				
Transition building mechanical equipment and appliances from fossil fuels to electricity through incentives, outreach and building codes. Include: space and water heating, appliances and other equipment	Focus on New Construction & Retrofits / time of replacement. Existing: SMPA incentives & Trade Ally program	4	Y	SMPA
Encourage transition to / use of geothermal, air source heat pumps, or other available heat exchange technology	Is GSHP applicable in our region? Encourage transition to cold climate air source heat pumps (ccASHP). Expensive?	4	Y	SMPA
Codes for New Construction, Remodels and Additions				
Adopt the 2018 International codes with specific local requirements to exceed minimum standards.	2018 IECC adopted by most jurisdictions (but not yet all). INCLUDE IN ACCOMPLISHMENTS and indicate short-term Municipal-specific actions for those that have not yet adopted.	3		
Strengthen existing building efficiency standards and codes to require 10% better than basic code construction, update building energy codes at least every 6 years, and move towards Net Zero Energy buildings. Incentivize Beyond Code construction practices.	Incentivize now, aim toward strengthening codes.	3	Y	
Continue to coordinate regional alignment of energy codes and 'beyond code' preferences	ongoing effort; began 2008... CONTINUE	2	Y	
Facilitate education for contractors, architects and property managers	Ongoing by EAP, could increase in partnership with others	1	Y	Municipal Building Departments
Promote / incentivize optimal control systems and thermostat settings to couple comfort with efficiency	MUNICIPAL-SPECIFIC?	4	Ridgway?	BHE; SMPA

Promote / Incentivize building automation systems (such as key card entry activation of electricity in lodging rooms)	Lodging oriented action. MUNICIPAL-SPECIFIC?	?	Ridgway?	BHE; SMPA
Natural Gas Efficiency:				
Continue rebate and incentive programs to replace old or inefficient systems/appliances	BHE residential, small business & large commercial programs exist	2	Y	BHE; SMPA
Encourage water tank insulation and pipe wrap on hot water systems	with high R-value insulation & pipe wrap, GHG potential increases	1	Y	BHE; SMPA
Provide technical assistance for natural gas heating alternatives	In process: develop & expands SMPA Trade Ally program	1	Y	SMPA
Improve the energy efficiency performance of existing buildings		4		
Continue to provide and educate community members on energy efficiency and renewable energy incentives available from SMPA, BHE, and municipalities.	BHE programs; SMPA incentives. ALREADY IN PLACE. CONTINUE.	2	Y	BHE; SMPA
Incentivize refrigeration upgrades	Incentivize yes, by SMPA / Tri-State? Green Grants? use of E-Temp equipment?	2	Y	BHE; SMPA
Incentivize, mandate & educate on "Away" mode technology for second homes when unoccupied	EDUCATE; MAKE MANDATORY;	2	Y	
examples: Property Assessed Clean Energy; CO RENEW; Alpine Bank and other specialized financing mechanisms	Expand outreach beyond EAP programs	2	Y	CO government ; banks
Encourage utilities to implement energy use comparison mechanism in monthly billing.	BHE's program was highly effective at increasing interest in energy assessments. Resulted in identification of gas leaks, inefficient controls & more. SMPA implement O-POWER or similar? Encourage BHE to reinstate their program?	4	Y	BHE; SMPA
Reduce energy consumption in rentals, apartments and multifamily buildings		3		

Support building automation to optimize efficiency and effectiveness	MORE APPLICABILITY W LARGE HOMES & COMMERCIAL BUILDINGS	3	Y	Regional trades expertise
Incentivize energy efficiency upgrades in rental properties	TOWN-SPECIFIC; PRIORITIZE LOW INCOME	2	Ridgway?	
Incentivize large employers that provide seasonal housing to deploy large-scale energy efficiency upgrades	MV-specific	2		
Develop renter-specific outreach and education campaigns	MUNICIPAL-SPECIFIC?	1	Ridgway?	
Anticipate and mitigate likely expansion of air conditioning use in new & existing buildings	Installation of A/C seems to be dictated by new incoming owners to the region, however improving controls & design to mitigate would help.	2		
Avoid or prolong the need for air conditioning via building design and management. Utilize education & outreach to building trades, owners, and facility and property managers.	EAP Property Manager & Building trade education programs could address this.	3	Y	
Encourage high efficiency air conditioning systems as AC use becomes more prevalent	beyond code requirements? increase SMPA incentive requirements?	2	Y	
Coordinate with efforts to adopt high efficiency electric heating systems (i.e. dual ground/air-source heat pumps)	Overlaps with above; SMPA Trade Ally program w/ ccASHP	2	Y	
Others:				
Encourage continued regular "Cost of Service Studies" by SMPA to incentivize and balance current and future priorities (i.e. EVs, fuel switching, time of use, peak shaving, energy efficiency, DSM).	Include	3	Y	SMPA
Continue to host and expand EcoAction Partners Green business program awarding and highlighting business that achieve energy efficiency and sustainability thresholds	EAP Green Business program CONTINUE	1	Y	Chambers of Commerce; Rotary Club; & other business

Recommendation	EAP Staff Comments	GHG Reduction Potential	Ridgway	PARTNERS
OBJECTIVE: Decrease vehicle travel				
Continue Outreach & Education efforts around mass transit options.			Y	SMART; Region 10
Subsidize/make bus passes available to commuting workers	Already being done to some extent. More opportunity to work with other big employers in area, SMART, etc.?	2	Y	TSG; other large employers; SMART
Enable more workforce to live near work or improve transit options	Affordable Housing	4	Y	
Reduce in-community vehicle use by residents and visitors.			Y	
OBJECTIVE: Increase use of Electric Vehicles (EVs)				
Improved tracking & analysis of EV station use	SMPA metering per EV station (& not mixed with infrastructure electricity use) would be helpful.	1	Y	SMPA
Provide free EV charging stations	What locations are free? Other locations needed? Market station locations more broadly.	2	Y	SMPA
Increase # EV charging stations when current EV stations are shown to be at peak capacity.	If there is demand, increase in visible/accessible locations (FUTURE ITEM)	2	Y	SMPA
Electrify fleet vehicles when viable.	SMART has plans. Timeframe?	4	Y	SMART; SMPA

[illegible]

Recommendation	EAP Staff Comments	GHG Reduction Potential	Ridgway
OBJECTIVE: Decrease GHG emissions per passenger associated with airline flights serving our region			
Educate, Outreach and Encourage travelers to offset their travel with carbon offset programs, emphasizing locally available options.	- Does TEX already promote / market the Carbon offset program available through PCI to passengers? YES, we have coordinated with Pinhead Institute on various occasions during busy activity in a Carbon Offset program since 2017.	1	Y
Support policies that encourage airlines to increase plane capacity/decrease # of flights.	Market forces / feasibility of influence concerns.		Y
Encourage increased use of biofuel as jet fuels at all regional airports. Support education of passengers about use of biofuels.	Telluride airport initiated use 2021. "TEX will be one of the first Airports that will begin utilizing blended bio and recycled Jet Fuel that meets all aircraft performance standards". More expensive, low supply volume currently. Longer term goal for other regional airports to use. "- Does TEX have a plan to market / communicate with passengers and the broader community TEX's use of biofuel? YES, we are preparing marketing and communication with the help of our fuel supplier AVFUEL. As a means of educating the public & increasing public support? YES - Is TEX using SAF for all of the Jet-A fuel provided at the airport? NO Or just a percentage at this point? At this time our goal is to provide 25% of our fuel sales as SAF. We are balancing costs and availability. We are proud to say that we will be one of the first Airports in Colorado that provide SAF.	4/1	Y

PARTNERS

Regional airports; TEX

Regional airports; TEX

Regional airports; TEX

Regional airports; TEX

Recommendation	EAP Staff Comments	GHG Reduction Potential	Ridgway	PARTNERS
OBJECTIVE: Reduce the overall volume of waste transported to landfills. Reduce, Reuse, Recycle, Repurpose and Composting.				
Continue community outreach, education & engagement efforts to reduce waste and improve effective utilization of recycling services and composting options.	Decrease paper consumption; Reduce single-use plastics; & more fall under this broader category	2 Y		Composting businesses or programs, such as Dirty Sturdy's
Require waste haulers to improve available waste volume data.	State-level requirements for WM to provide data? Include in municipal contracts at time of renewal.	2 Y		
Expand Plastic Film Upcycling Program and other recycling programming	EAP Plastic Film program growing.	2 Y		
Continue hazardous waste collection services and increase availability to other communities	SMC annual collection. Ouray County?	2/1 Y		
Decrease festival & event waste through waste reduction, resource recovery & composting. Require contracts for services where appropriate.	Telluride requires for most festivals. Ridgway volunteers manage (improved composting methodology needed).	2 Y		Festival & event owners & managers
Support restaurants and businesses with waste reduction.	Zero Waste checklist: include in EAP Green Business Program. Collaborate with partners for greater outreach	2 Y		
Encourage waste haulers to use clean vehicles.		3 Y		Waste Management; Bruin; 3XM
OBJECTIVE: Increase Composting in the region.	Potential to reduce 65% of landfill waste through composting			
Increase community compost programs and individual residential composters, and encourage participation in composting programs.	FUTURE potential to require composting, but must first increase availability & viability of use	2 Y		

Recommendation	EAP Staff Comments	GHG Reduction Potential	Ridgway	PARTNERS
OBJECTIVE: Reduce Water Consumption from Municipal and Industrial Uses				
Continue to track water and wastewater use data, associated energy use, & impacts of conservation / drought measures	SEB annual water data analysis	1	Y	Municipal water departments
Evaluate & implement system methodologies to reduce water-associated energy use		2	Y	
Install water meters	Utilize financial incentive programs. Establish water rate structures based on use. MUNICIPAL-SPECIFIC	1/1		CO state grants
Water usage data improvement	continue making progress to understand water consumption and reduce water system leakage MUNICIPAL-SPECIFIC			
environmentally sound domestic water conservation plans.	What communities do not yet have them?	1	Existing	
Encourage/incentivize low flow water fixtures	Partially required by building codes & conservation plans	2	Y	CO state government support?
OBJECTIVE: Improve watershed health and security				
Continue development, adoption, implementation and enforcement of municipal drought mitigation plans to reduce water use.	CONTINUE - Outside watering restrictions are effective as seen through water data tracking. ANY MUNICIPALITIES NOT HAVE THEM YET?	1	Y	
Support efforts of organizations (local, regional, and statewide) that focus on water security and watershed ecological health.		1	Y	San Miguel Watershed Coalition; Uncompaghr e Watershed Partnership

[illegible]

Recommendation	EAP Staff Comments	GHG Reduction Potential	Ridgway	PARTNERS
OBJECTIVES: Increase the GHG sequestration and water retention capacity of land in the region.	SMC PES component			MANY! Including agricultural producers
Increase yield and health of crops and livestock, through the use of regenerative agricultural and ranching practices.	SMC PES component			
Increase GHG sequestration capacity of trees and plant life in the region.	SMC PES component			
Support San Miguel County in implementing their Payment for EcoSystem Services (PES) Program. https://sanmiguelwc.maps.arcgis.com/apps/MapJournal/index.html?appid=e7b35f74886344afb6931deadea6e4fc	SMC Land Use GHG Inventory - COMPLETE, so list as accomplishment, along with a link to it. PES is SMC program to improve soil health through changes in land management practices. Track benefits through calculations of associated carbon sequestration and other metrics.		Y	
Utilize SMC's Land Use GHG Inventory and PES Program experiences to develop and implement similar land use recommendations for Ouray County	Or implement a similar study specific for Ouray County. FUTURE			
Quantify GHG impacts of carbon sequestration actions and relate them to our GHG emissions inventory.			Y	Comet-Planner? NRCS? SMC PES Program
Increase measures to promote and protect healthy forests.	in their bodies and below the soil surface, protecting certain areas of the forest ensures long term sequestration capacity	2	Y	USFS. Land Trusts. Sheep Mountain Alliance. Citizen groups...
Implement programs, develop incentives and encourage the planting of trees appropriate for specific ecological zones.	Existing initiatives with Extension office, Seas of Trees, & others	3	Y	Extension Office; Seas of Trees; others?
Encourage landscaping according to recommended best practices for local ecological zone	i.e. Ecology Commission guidelines under development; low water use vegetation; etc.	2	Y	Extension Office;

[illegible]

Recommendation	Comments	GHG Reduction	Telluride	PARTNERS
Through continued engagement with community members, elected officials and partner organizations, SEB will advance climate and energy policy to the benefit of the community. Given the dynamic nature of the policy landscape, SEB will continue a formal process for prioritizing and advocating on key issues.				
Continue to participate in regional collaboration of local governments, stakeholders and utilities to drive regional clean energy transition & GHG emissions reduction	Existing through Sneffels Energy Board	4	Y	SEB
Participate in state-level organizations to drive regional clean energy transition & GHG emissions reduction	Continue to participate in CC4CA; & others	1	Y	CC4CA & others
Consider GHG emissions as part of all decision-making processes. Utilize a GHG impact assessment tool, if available, to quantify GHG emission or sequestration impacts.	All governments, organizations, communities use an effective impact assessment tool. Examples topics: Tourist marketing, Affordable housing, new large construction projects, impact of increased flights & tourism... and on the sequestration side: revegetation projects, tree planting, LUC policies, etc.		Y	ICLEI ClearPath Tool
Increase community-level outreach and engagement with implementation of the Climate Action Plan.			Y	WPL, other libraries? Rotary Club? Telluride Institute?
Collaborate between municipalities & organizations on actions when beneficial.			Y	SEB

Recommendation	Comments	GHG Reduction Potential	Telluride	PARTNERS
OBJECTIVE: Increase percentage of electricity provided by renewable energy sources.				
Establish a local renewable energy generation target and implement actions to achieve it.	Do not specify target in CAP.	3	Y	SMPA
Identify and eliminate barriers to local renewable energy generation.	Tri-state cap with SMPA contract; Waive permit fees; Local regulations; Sales Tax Legislation	2	Y	SMPA; WCU
Advance regional grid flexibility to enable a modernize renewable electricity supply.	Include as guidance / input from SEB to SMPA	4	Y	SMPA
Install renewable energy on government facilities.	Examples already exist, what other potential is there?	3	Y	DOLA grants? SMPA
Incentivize, promote & encourage net-metered solar systems on residential & commercial roofs / or ideal pole-mount locations	Encourage RE development consideration in Land Use Codes? Master Plans?	4	Y	SMPA; Solar installers? HOA's?
Encourage community participation in SMPA Totally Green program for electricity not covered by local renewable energy production	Support SMPA in establishing goals & promotion?	4	Y	SMPA; WFE, RCOG, Rotary Club; Telluride Institute; HOA's... Anyone who sends out community newsletters
Work with renewable energy installation businesses to promote RE incentives & financing opportunities.	SMPA; MV; others? CO RENU Loan; Alpine Bank Loan; C-PACE	2	Y	SMPA; Solar installers?

Recommendation	Comments	GHG Reduction Potential	Telluride	PARTNERS
OBJECTIVE: Beneficial Electrification of Buildings				
Transition building mechanical equipment and appliances from fossil fuels to electricity through incentives, outreach and building codes. Include: space and water heating, appliances and other equipment	Focus on New Construction & Retrofits / time of replacement. Existing: SMPA incentives & Trade Ally program	4	Y	SMPA
Encourage transition to / use of geothermal, air source heat pumps, or other available heat exchange technology	Is GSHP applicable in our region? Encourage transition to cold climate air source heat pumps (ccASHP). Expensive?	4	Y	SMPA
Codes for New Construction, Remodels and Additions				
Adopt the 2018 International codes with specific local requirements to exceed minimum standards.	2018 IECC adopted by most jurisdictions (but not yet all). INCLUDE IN ACCOMPLISHMENTS and indicate short-term Municipal-specific actions for those that have not yet adopted.	3		
Strengthen existing building efficiency standards and codes to require 10% better than basic code construction, update building energy codes at least every 6 years, and move towards Net Zero Energy buildings. Incentivize Beyond Code construction practices.	Incentivize now, aim toward strengthening codes.	3	Y	
Continue to coordinate regional alignment of energy codes and 'beyond code' preferences	ongoing effort; began 2008... CONTINUE	2	Y	
Facilitate education for contractors, architects and property managers	Ongoing by EAP, could increase in partnership with others	1	Y	Municipal Building Departments
Promote / incentivize optimal control systems and thermostat settings to couple comfort with efficiency	MUNICIPAL-SPECIFIC?	4	TELLURIDE ?	BHE; SMPA

Promote / Incentivize building automation systems (such as key card entry activation of electricity in lodging rooms)	Lodging oriented action. MUNICIPAL-SPECIFIC?	?	TELLURIDE ?	BHE; SMPA
Natural Gas Efficiency:				
Continue rebate and incentive programs to replace old or inefficient systems/appliances	BHE residential, small business & large commercial programs exist	2 Y		BHE; SMPA
Encourage water tank insulation and pipe wrap on hot water systems	with high R-value insulation & pipe wrap, GHG potential increases	1 Y		BHE; SMPA
Provide technical assistance for natural gas heating alternatives	In process: develop & expands SMPA Trade Ally program	1 Y		SMPA
Improve the energy efficiency performance of existing buildings		4		
Continue to provide and educate community members on energy efficiency and renewable energy incentives available from SMPA, BHE, and municipalities.	BHE programs; SMPA incentives. ALREADY IN PLACE. CONTINUE.	2 Y		BHE; SMPA
Incentivize refrigeration upgrades	Incentivize yes, by SMPA / Tri-State? Green Grants? use of E-Temp equipment?	2 Y		BHE; SMPA
Incentivize, mandate & educate on "Away" mode technology for second homes when unoccupied	EDUCATE; MAKE MANDATORY;	2 Y		
examples: Property Assessed Clean Energy; CO RENEW; Alpine Bank and other specialized financing mechanisms	Expand outreach beyond EAP programs	2 Y		CO government ; banks
Encourage utilities to implement energy use comparison mechanism in monthly billing.	BHE's program was highly effective at increasing interest in energy assessments. Resulted in identification of gas leaks, inefficient controls & more. SMPA implement O-POWER or similar? Encourage BHE to reinstate their program?	4 Y		BHE; SMPA
Reduce energy consumption in rentals, apartments and multifamily buildings		3		

Support building automation to optimize efficiency and effectiveness	MORE APPLICABILITY W LARGE HOMES & COMMERCIAL BUILDINGS	3	Y	Regional trades expertise
Incentivize energy efficiency upgrades in rental properties	TOWN-SPECIFIC; PRIORITIZE LOW INCOME	2	Telluride?	
Incentivize large employers that provide seasonal housing to deploy large-scale energy efficiency upgrades	MV-specific	2		
Develop renter-specific outreach and education campaigns	MUNICIPAL-SPECIFIC?	1	Telluride?	
Anticipate and mitigate likely expansion of air conditioning use in new & existing buildings	Installation of A/C seems to be dictated by new incoming owners to the region, however improving controls & design to mitigate would help.	2		
Avoid or prolong the need for air conditioning via building design and management. Utilize education & outreach to building trades, owners, and facility and property managers.	EAP Property Manager & Building trade education programs could address this.	3	Y	
Encourage high efficiency air conditioning systems as AC use becomes more prevalent	beyond code requirements? increase SMPA incentive requirements?	2	Y	
Coordinate with efforts to adopt high efficiency electric heating systems (i.e. dual ground/air-source heat pumps)	Overlaps with above; SMPA Trade Ally program w/ ccASHP	2	Y	
Others:				
Encourage continued regular "Cost of Service Studies" by SMPA to incentivize and balance current and future priorities (i.e. EVs, fuel switching, time of use, peak shaving, energy efficiency, DSM).	Include	3	Y	SMPA
Continue to host and expand EcoAction Partners Green business program awarding and highlighting business that achieve energy efficiency and sustainability thresholds	EAP Green Business program CONTINUE	1	Y	Chambers of Commerce; Rotary Club; & other business

Recommendation	EAP Staff Comments	GHG Reduction Potential	Telluride	PARTNERS
OBJECTIVE: Decrease vehicle travel				
Continue Outreach & Education efforts around mass transit options.			Y	SMART; Region 10
Subsidize/make bus passes available to commuting workers	Already being done to some extent. More opportunity to work with other big employers in area, SMART, etc.?	2	Y	TSG; other large employers; SMART
Enable more workforce to live near work or improve transit options	Affordable Housing	4	Y	
Reduce in-community vehicle use by residents and visitors.			Y	
OBJECTIVE: Increase use of Electric Vehicles (EVs)				
Improved tracking & analysis of EV station use	SMPA metering per EV station (& not mixed with infrastructure electricity use) would be helpful.	1	Y	SMPA
Provide free EV charging stations	What locations are free? Other locations needed? Market station locations more broadly.	2	Y	SMPA
Increase # EV charging stations when current EV stations are shown to be at peak capacity.	If there is demand, increase in visible/accessible locations (FUTURE ITEM)	2	Y	SMPA
Electrify fleet vehicles when viable.	SMART has plans. Timeframe?	4	Y	SMART; SMPA

[illegible]

Recommendation	EAP Staff Comments	GHG Reduction Potential	Telluride
OBJECTIVE: Decrease GHG emissions per passenger associated with airline flights serving our region			
Educate, Outreach and Encourage travelers to offset their travel with carbon offset programs, emphasizing locally available options.	- Does TEX already promote / market the Carbon offset program available through PCI to passengers? YES, we have coordinated with Pinhead Institute on various occasions during busy activity in a Carbon Offset program since 2017.	1	Y
Support policies that encourage airlines to increase plane capacity/decrease # of flights.	Market forces / feasibility of influence concerns.		Y
Encourage increased use of biofuel as jet fuels at all regional airports. Support education of passengers about use of biofuels.	Telluride airport initiated use 2021. "TEX will be one of the first Airports that will begin utilizing blended bio and recycled Jet Fuel that meets all aircraft performance standards". More expensive, low supply volume currently. Longer term goal for other regional airports to use. "- Does TEX have a plan to market / communicate with passengers and the broader community TEX's use of biofuel? YES, we are preparing marketing and communication with the help of our fuel supplier AVFUEL. As a means of educating the public & increasing public support? YES - Is TEX using SAF for all of the Jet-A fuel provided at the airport? NO Or just a percentage at this point? At this time our goal is to provide 25% of our fuel sales as SAF. We are balancing costs and availability. We are proud to say that we will be one of the first Airports in Colorado that provide SAF.	4/1	Y

PARTNERS

Regional airports; TEX

Regional airports; TEX

Regional airports; TEX

Regional airports; TEX

Recommendation	EAP Staff Comments	GHG Reduction Potential	Telluride	PARTNERS
OBJECTIVE: Reduce the overall volume of waste transported to landfills. Reduce, Reuse, Recycle, Repurpose and Composting.				
Continue community outreach, education & engagement efforts to reduce waste and improve effective utilization of recycling services and composting options.	Decrease paper consumption; Reduce single-use plastics; & more fall under this broader category	2 Y		Composting businesses or programs, such as Dirty Sturdy's
Require waste haulers to improve available waste volume data.	State-level requirements for WM to provide data? Include in municipal contracts at time of renewal.	2 Y		
Expand Plastic Film Upcycling Program and other recycling programming	EAP Plastic Film program growing.	2 Y		
Continue hazardous waste collection services and increase availability to other communities	SMC annual collection. Ouray County?	2/1 Y		
Decrease festival & event waste through waste reduction, resource recovery & composting. Require contracts for services where appropriate.	Telluride requires for most festivals. Ridgway volunteers manage (improved composting methodology needed).	2 Y		Festival & event owners & managers
Support restaurants and businesses with waste reduction.	Zero Waste checklist: include in EAP Green Business Program. Collaborate with partners for greater outreach	2 Y		
Encourage waste haulers to use clean vehicles.		3 Y		Waste Management; Bruin; 3XM
OBJECTIVE: Increase Composting in the region.	Potential to reduce 65% of landfill waste through composting			
Increase community compost programs and individual residential composters, and encourage participation in composting programs.	FUTURE potential to require composting, but must first increase availability & viability of use	2 Y		

Recommendation	EAP Staff Comments	GHG Reduction Potential	Telluride	PARTNERS
OBJECTIVE: Reduce Water Consumption from Municipal and Industrial Uses				
Continue to track water and wastewater use data, associated energy use, & impacts of conservation / drought measures	SEB annual water data analysis	1	Y	Municipal water departments
Evaluate & implement system methodologies to reduce water-associated energy use		2	Y	
Install water meters	Utilize financial incentive programs. Establish water rate structures based on use. MUNICIPAL-SPECIFIC	1/1		CO state grants
Water usage data improvement	continue making progress to understand water consumption and reduce water system leakage MUNICIPAL-SPECIFIC			
environmentally sound domestic water conservation plans.	What communities do not yet have them?	1	Existing	
Encourage/incentivize low flow water fixtures	Partially required by building codes & conservation plans	2	Y	CO state government support?
OBJECTIVE: Improve watershed health and security				
Continue development, adoption, implementation and enforcement of municipal drought mitigation plans to reduce water use.	CONTINUE - Outside watering restrictions are effective as seen through water data tracking. ANY MUNICIPALITIES NOT HAVE THEM YET?	1	Y	
Support efforts of organizations (local, regional, and statewide) that focus on water security and watershed ecological health.		1	Y	San Miguel Watershed Coalition; Uncompaghr e Watershed Partnership

[illegible]

Recommendation	EAP Staff Comments	GHG Reduction Potential	Telluride	PARTNERS
OBJECTIVES: Increase the GHG sequestration and water retention capacity of land in the region.	SMC PES component			MANY! Including agricultural producers
Increase yield and health of crops and livestock, through the use of regenerative agricultural and ranching practices.	SMC PES component			
Increase GHG sequestration capacity of trees and plant life in the region.	SMC PES component			
Support San Miguel County in implementing their Payment for EcoSystem Services (PES) Program. https://sanmiguelwc.maps.arcgis.com/apps/MapJournal/index.html?appid=e7b35f74886344afb6931deadea6e4fc	SMC Land Use GHG Inventory - COMPLETE, so list as accomplishment, along with a link to it. PES is SMC program to improve soil health through changes in land management practices. Track benefits through calculations of associated carbon sequestration and other metrics.		Y	
Utilize SMC's Land Use GHG Inventory and PES Program experiences to develop and implement similar land use recommendations for Ouray County	Or implement a similar study specific for Ouray County. FUTURE			
Quantify GHG impacts of carbon sequestration actions and relate them to our GHG emissions inventory.			Y	Comet-Planner? NRCS? SMC PES Program
Increase measures to promote and protect healthy forests.	in their bodies and below the soil surface, protecting certain areas of the forest ensures long term sequestration capacity	2	Y	USFS. Land Trusts. Sheep Mountain Alliance. Citizen groups...
Implement programs, develop incentives and encourage the planting of trees appropriate for specific ecological zones.	Existing initiatives with Extension office, Seas of Trees, & others	3	Y	Extension Office; Seas of Trees; others?
Encourage landscaping according to recommended best practices for local ecological zone	i.e. Ecology Commission guidelines under development; low water use vegetation; etc.	2	Ecology Commission	Extension Office;



AGENDA ITEM - 5.d.

TITLE:

11:10 am Presentation of the Good Samaritan legislation.

Presented by: Ty Churchwell, Trout Unlimited

Time needed: 20 mins

PREPARED BY:

RECOMMENDED ACTION/MOTION:

INTRODUCTION/BACKGROUND:

----- Forwarded message -----

From: **Ty Churchwell** <Ty.Churchwell@tu.org>

Date: Wed, Mar 3, 2021 at 11:11 AM

Subject: To engage on Good Samaritan legislation

To: lancew@sanmiguelcountyco.gov <lancew@sanmiguelcountyco.gov>

Cc: mikeb@sanmiguelcountyco.gov <mikeb@sanmiguelcountyco.gov>

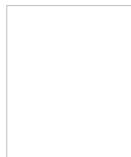
Hello, Commissioner Waring.

I'm reaching out to you today to engage you and the San Miguel BOCC on an important issue; Good Samaritan legislation. I'm sorry we've not met, but in previous years, I had worked quite extensively on this subject with commissioners May and Goodtimes. In their absence, Ouray commissioner Padgett suggested I speak with you. As an introduction, I am on staff for Trout Unlimited out of our Durango office and work exclusively on federal mining policy. As an example, on behalf of the citizens of the Animas River watershed, I am leading the Superfund cleanup of the abandoned mines in our river's headwaters.

Simply, I seek your guidance on how best to engage your BOCC on this subject. Ultimately, I will be asking San Miguel County to re-up your formal support for Good Sam legislation as a concept. Please note, a copy of your county's last letter is attached for reference. Also attached is a bit of a primer on the subject, just to get you thinking about it.

I would be happy to do a quick presentation to your board as a function of requesting a letter. With a new administration and Congress in-place in D.C., there is a renewed push to finally get this important legislation across the finish line. I welcome any direction you have on the proper procedure for such a request to your county.

Thank you,



Ty Churchwell / Mining Coordinator
Trout Unlimited / Angler Conservation Program
ty.churchwell@tu.org / Cell: 970-903-3010
1309 E. 3rd Ave., Suite 109, Durango, CO 81301
www.tu.org

FISCAL IMPACT:

Contract Number:	Date Executed	End Date	Department(s)
YYYY-###			Board of County Commissioner Staff
Description:			

ATTACHMENTS:

Description	Upload Date
Copy of Previous Support letter	3/4/2021
Good Samaritan Legislation	3/4/2021

SAN MIGUEL COUNTY

BOARD OF COMMISSIONERS

ELAINE FISCHER

ART GOODTIMES

JOAN MAY

June 17, 2015

Honorable Michael F. Bennet
261 Russell SOB
Washington, DC 20510
Fax: 202-228-5097

Honorable Cory Gardner
354 Russell SOB
Washington, DC 20510
Fax: 202-224-6524

Honorable Scott Tipton
218 Cannon HOB
Washington, DC 20515
Fax: 202-226-9669

Dear US Senators Bennet and Gardner and US Representative Tipton:

The purpose of this letter is to communicate the support of the San Miguel County Board of Commissioners for legislation to clean up abandoned hardrock mines in the San Juan Mountains. The "Good Samaritan Cleanup of Abandoned Hardrock Mines" (S 1443) was a good legislation prototype. We would like to see this bill reduced in scope to provide for a pilot test within Colorado.

As you know, Southwest Colorado, and San Miguel County in particular, is dotted with hundreds of abandoned mines, many of which are sources of heavy metal pollution and acidity in the headwaters of our rivers. Current laws and regulations make it difficult, if not impossible, for well-intended, non-responsible parties to perform much needed mine remediation for fear of long-term liability.

Good Samaritan legislation would help assure well-qualified and capable citizens and organizations to perform liability-free mine remediation work in our county.

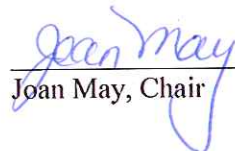
The San Miguel County Board of Commissioners supports efforts to make Good Samaritan legislation a priority. You have our strong support.

This common sense legislation will encourage improved water quality for our region while creating jobs and improving our quality of life in San Miguel County.

Please do not hesitate to contact us if we can be of assistance in advancing this important legislation. We greatly appreciate your leadership on this very important issue.

Sincerely,

SAN MIGUEL COUNTY, COLORADO
BOARD OF COUNTY COMMISSIONERS


Joan May, Chair

Cc: John Whitney
Darlene Marcus
Ty Churchwell

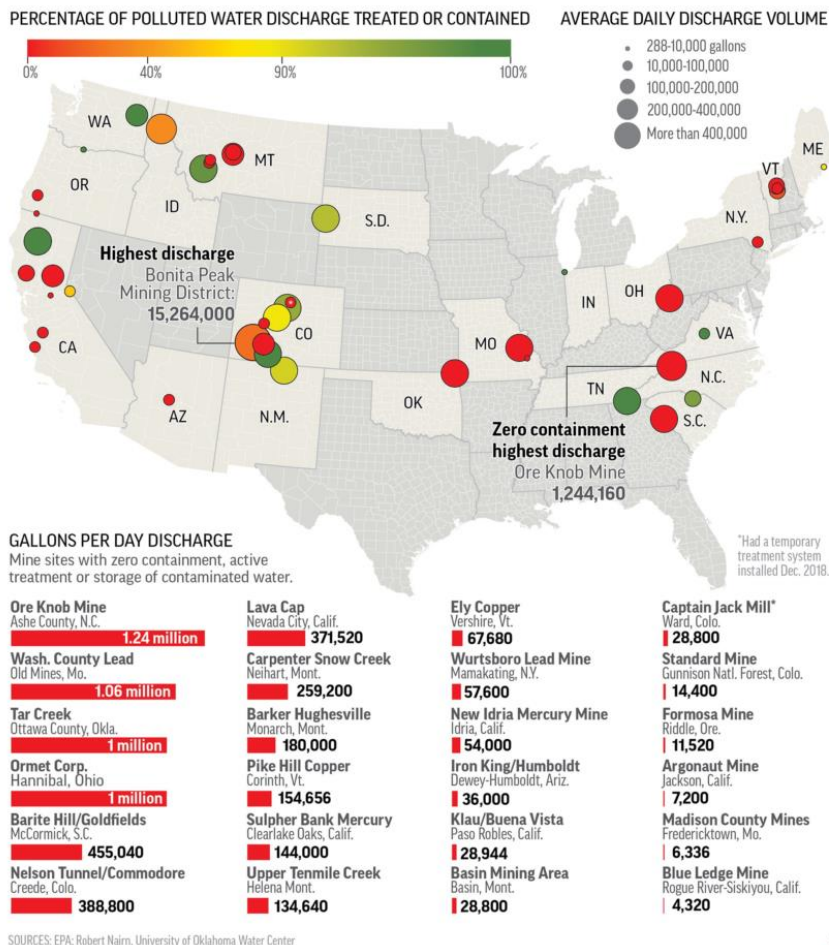


Understanding Good Samaritan Legislation: Authorizing third-party toxic mine cleanups June 2020

Trout Unlimited seeks to pass legislation to improve and strengthen federal law allowing Good Samaritans to proceed with cleaning up abandoned mines which are polluting our nation's landscapes and watersheds.

US mining sites discharging polluted water daily

Polluted water is being discharged at 43 mines and mine complexes overseen by the EPA. At some sites the pollution is treated and captured. At others it flows into nearby waterways, poisoning aquatic life and tainting water supplies.



Abandoned mine pollution is widespread and perpetual:

- Approximately 110,000 miles of streams are listed by the Environmental Protection Agency (EPA) as impaired for heavy metals or acidity in the United States and abandoned mines are a major source of these impairments.
- The EPA's current estimates abandoned hardrock mines are impairing water quality in [40 percent](#) of headwater streams in the western U.S., 52 percent of which are [drinking water supplies](#).
- An estimated [33,000](#) abandoned mine sites have degraded the environment and are impacting water quality through acid mine [drainage](#).
- In eastern states abandoned coal mines have a similar impact on water quality, contaminating streams and impacting local water

supplies. The state of [Pennsylvania](#) has passed state-level Good Samaritan legislation to facilitate coal mine cleanups. Trout Unlimited helped lead the effort to pass the legislation and has employed its protections to [great success](#).

A mission to conserve, protect, & restore North America's coldwater fisheries and their watersheds.

National Headquarters : 1777 N. Kent Street, Suite 100, Arlington, VA 22209

Contact : Ty Churchwell | ty.churchwell@tu.org | www.tu.org

The people and mine operators who caused this pollution at legacy mines are long-gone and there is no one to hold responsible for the cleanup of these toxic wastelands. Therefore, these abandoned mines continue to leak toxic chemical pollutants, day after day, decade after decade.

This problem is too big for the federal government to tackle alone: The EPA estimates that cleaning up abandoned mines could cost taxpayers [tens of billions of dollars](#). Independent of the cost, the only current legal mechanism to address these mines is a federal Superfund cleanup. However, a federal Superfund cleanup only addresses the worst cases and is not well-suited for smaller discharges. Thousands of these smaller mines bleed toxic lead, arsenic, zinc and mercury every single day without a legal mechanism authorizing state agencies and private organizations to add to federal cleanup capacity and take-on smaller remediation projects.

Current law prevents mine cleanups: Under the Clean Water Act (CWA), a mine discharging polluted water is considered 'point-source' pollution, meaning it is a contaminant that enters the environment from an easily identified and confined place (EPA). As such, the mine operator is required to obtain a discharge permit under the National Pollutant Discharge Elimination System (NPDES). The terms of the permit require the operator to remove the pollutants via active water treatment before discharging the water back into the watershed for downstream use, such as municipal water sources or agricultural. Whether a point-source pollution is created by a factory, a municipal sewer system or a mine, as long as the operator creates a pollution source, they are required to maintain the permit and meet the conditions of the CWA. This is an effective system except when there's an abandoned mine with no entity legally responsible for the cleanup.

Why can't Good Samaritans help with this clean up? In short, current laws treat those who want to clean up abandoned mines as if they are polluters themselves. Conservation organizations, watershed groups and state agencies want to help clean up abandoned mines but are dissuaded from doing so by regulations and immense liability risks. In most cases, cost-effective Good Samaritan cleanups would improve water quality, but fully-meeting EPA standards may not be feasible. This would leave Good Samaritans in violation of the CWA and on the hook for any remaining pollution, even though they did not create the pollution in the first place and have made successful improvements to water quality. Additionally, Good Samaritans are not well-suited to hold discharge permits in perpetuity – a draining mine will never stop draining.

What is Good Sam legislation? Trout Unlimited is working with stakeholders and members of Congress to draft legislation that would create a pilot program to facilitate Good Samaritan cleanups. The program would designate a new discharge permit under the NPDES with special terms appropriate for an abandoned mine site. As long as the Good Samaritan improves water quality to the terms of that site's permit, over a specified amount of time, the Good Samaritan cleanup would be considered a success and the permit terminated.

- ***A Good Samaritan permit is not a free pass from oversight:*** Permits issued for Good Sam cleanups would include terms and conditions that the Good Samaritan must meet. This would include proper engineering, safety and emergency plans, sufficient project funding and bonding and long-term monitoring. Moreover, only those activities authorized by the permit will be subject to liability protections. In the unlikely event of an accident or worsening water quality, the Good Samaritan would still be liable for those failures.
- ***The Issuance of a permit would be a public process:*** Before a permit is issued, the proposal would be available for public comment and review. The EPA would ultimately be responsible for issuing Good Samaritan permits under the proposed program.

- ***Good Samaritan projects are low risk:*** The current proposed legislation would authorize 15 pilot projects to prove-up the concept and identify any shortcomings in the permitting program. The most cost-effective way to treat acid mine drainage is with passive treatment systems after the mine water leaves the mine. So, an unlikely failure would simply mean that water quality would return to baseline conditions.
- ***Good Samaritan legislation will not create a Clean Water Act loophole:*** Good Samaritan legislation would formally define what sites would be eligible for pilot projects and who qualify as Good Samaritans. Only bona fide Good Samaritans - third-parties who are in no way responsible for the pollution - could receive Good Samaritan permits, and only those sites that are truly abandoned would be eligible. Current mining operations and responsible parties at closed mining facilities are still going to remain liable for the pollution they have created.
- ***Good Samaritan legislation will strengthen the Clean Water Act:*** Good Samaritan legislation doesn't weaken the CWA; it improves it so that we are able to clean-up sources of pollution and create more clean water. The objective of the CWA is to restore and maintain the integrity of our nation's waters – Good Samaritan legislation moves us closer to that objective.

How Can You Help?

Proponents of Good Samaritan legislation believe any improvement to water quality is better than none at all. Outside of a Superfund cleanup – for which most abandoned mine sites would not qualify - the current laws create a 'none at all' environment. We can and must do better.

To find out how you can help solve this problem go to



AGENDA ITEM - 5.e.

TITLE:

Consideration of approving the Steincrusher LLC independent contractor agreement with Road & Bridge for gravel crushing./MOTION

Presented by:

Time needed:

PREPARED BY:

Road and Bridge Dept

RECOMMENDED ACTION/MOTION:

To approve as presented.

INTRODUCTION/BACKGROUND:

FISCAL IMPACT:

Contract Number:	Date Executed	End Date	Department(s)
YYYY-###			Board of County Commissioner Staff
Description:			

ATTACHMENTS:

Description
Steincrusher Agreement

Upload Date
3/5/2021

AGREEMENT FOR SERVICES

Independent Contractor

PROJECT: 2021-2022 Gravel Crushing

CONTRACTOR NAME: Steincrusher LLC

LOCATION: San Miguel County: Klondike, Norwood, Pathfinder & Zadra Gravel Pits

San Miguel County (the "County") wishes to engage the services of an independent contractor. The undersigned contractor ("Contractor") has agreed to provide such services, as an independent contractor, in return for the compensation stated herein. Contractor has read and agrees to the terms and conditions stated herein.

BE IT AGREED AS FOLLOWS:

1. **CONTRACT DOCUMENTS.** The "Contract Documents" shall consist of the following:
 - a) This Agreement;
 - b) Invitation to Bid; Exhibit A;
 - c) SMC Road Department 2021 Gradation Specifications; Exhibit B;
 - d) Steincrusher LLC's pricing proposal; 2021 Crushed Gravel Requirements Bid Form as Exhibit C;
 - e) CDPHE Construction Permit as Exhibit D;
 - f) Certificate of Liability Insurance as Exhibit E;
 - g) Workman's Compensation Insurance Exhibit F;
 - h) Contractor's W-9 as Exhibit G.
1. **DESCRIPTION OF SERVICES.** Contractor warrants that it is fully qualified to perform the below-described Services and shall perform the Services following generally recognized professional practices and standards of Contractor's profession, to the reasonable satisfaction of the County, and in strict accordance with the provisions of the Contract Documents. No adjustment or modification of the Contract Documents shall be allowed for any misunderstanding of the Services or of the terms and provisions contained in the Contract Documents. Contractor agrees to perform the following services for San Miguel County: Crush gravel in all four of San Miguel County's Pits for unit cost in the attached bid form.

Pathfinder Pit, 15,000 cy ¾" Class 6 @ 6.30 & 5,000 cy 3" Class 2 @ 6.30 = \$ 126,000
Klondike Pit, 15,000 cy ¾" Class 6 @ 6.30 & 5,000 cy 3" Class 2 @ 6.30 = \$126,000
Norwood Pit 15,000 cy ¾" Class 6 @ 6.30 = \$94,500
Zadra Pit 10,000 cy ¾" Class 6 @ 8.10 = \$81,000
2. **COMPENSATION.** San Miguel County agrees to pay \$283,500 in 2021 and \$144,000 in 2022. Total amount is not to exceed \$427,500.

Invoices must be submitted to and approved by the County Representative, Ryan Righetti, Road Superintendent, designated in the "Authorized Representative" paragraph herein and delivered to the San Miguel County Finance Office. Approved invoices that are received by the Finance Office before the 1st day of the month will be paid on the tenth day of the month; invoices received in the Finance Office the 2nd through the 10th day of the month will be paid on the 20th day of the month; invoices received on the 11th through the 20th day of the month will be paid on the last working day of the month. Payment of invoices does not constitute final acceptance of work, nor shall it be construed as a waiver by the County of any of its rights as may be provided by law.

Contractor represents and warrants that the prices, charges, or fees outlined in this Agreement (on the whole) are at least as favorable as the prices, charges, or fees Contractor charges (on the whole) to other of its customers/clients for the same or substantially similar services provided under the same or similar circumstances, terms, and conditions. If Contractor agrees or contracts with other customers/clients similarly

situated during the term of this Agreement, and offers or agrees to a financial term more favorable than those set forth herein (on the whole), Contractor agrees that it will reduce the prices, charges, or fees charged to the County concerning the products/services hereunder to the most favorable rates received by those other customers/clients.

3. **TERM OF AGREEMENT.** The term of this Agreement expires **December 31, 2022.**
4. **AUTHORIZED REPRESENTATIVES.** The County designates **Ryan Righetti, Road Superintendent**, as the County Representative under this Agreement. Contractor designates **Daniel Eckstine** as the Contractor Representative. Said Representatives shall have the authority to bind the parties concerning the Services. The County Representative shall be present at the worksite and/or review Contractor's work as necessary to assure the Contractor's satisfactory performance under this Agreement. The Contractor Representative shall also be responsible for advising the County Representative of the status of the Services and agrees to take direction only from the County Representative and to comply promptly and fully with the reasonable requests and directives issued by the County Representative from time to time. The County may change its representative at any time by giving Notice to Contractor as set forth herein. Contractor shall not replace the Contractor Representative unless: (a) the County requests a replacement or (b) Contractor terminates the employment of the Contractor Representative and provides a satisfactory substitute. The County must approve the substitute Contractor Representative, and, if no substitute is acceptable, the County may terminate this Agreement.
5. **APPROVAL & ACCEPTANCE OF SERVICES.** The County Representative shall be the sole judge of the acceptability of the Services by the Contractor and the sufficiency of any supporting data submitted by the Contractor. If at the sole discretion of the County conferences with Contractor are necessary or desirable to explain or correct Services, Contractor shall make no additional charge for time or costs for attendance as such conference or for making the required explanations or corrections.
6. **INDEPENDENT CONTRACTOR.** The parties agree that the relationship created by this Agreement is that of employer-independent contractor. Contractor is not an employee of San Miguel County and is not entitled to any benefits provided by San Miguel County to its employees. Unless otherwise specified in writing, Contractor shall furnish all supervision, labor, materials, equipment, supplies, and other incidentals to complete the requirements of the job. Contractor has the authority to control and direct the details of the work; the County is interested only in the results. Contractor agrees to comply with all state and federal requirements pertaining to workers' compensation, general liability and employment liability insurance relating to the performance and completion of this Agreement. The Services as defined herein, are subject to San Miguel County's right of inspection and approval. Contractor may practice their profession for others during periods when not performing work under this Agreement for San Miguel County. The County may, during the term of this Agreement, engage other independent contractors to perform the same or similar work that the Contractor performs.
7. **WORK PERFORMED AT CONTRACTOR'S RISK.** Contractor warrants that it is fully qualified to perform the Services as set forth herein and shall perform the Services following the professional standards of the industry and in strict accordance with the provisions of the Contract Documents. Contractor shall take all precautions necessary and shall be responsible for the safe performance of the services described herein. All work shall be done at Contractor's risk. Contractor shall be responsible for any damage or loss to San Miguel County property used or held for use in connection with the work performed.
8. **INSURANCE & LICENSURE.** Contractor and any subcontractors shall procure and maintain until all of their obligations under this Agreement have been discharged, including any warranty periods, insurance against claims for injury to persons or damages to property which may arise from, or in connection with the performance of work hereunder by the Contractor, its agents, representatives, employees, or subcontractors. The County shall be endorsed as an additional insured on any policy of Commercial General Liability insurance ("CGL") that the Contractor has obtained, as evidenced by a current certificate of liability insurance which the

Contractor shall provide to the County upon execution of this Agreement. The insurance requirements herein are minimum requirements for this Agreement and in no way limit the Contractor's indemnity obligations to the County as set forth herein. The County in no way warrants that the minimum limits of insurance specified herein are sufficient to protect the Contractor from liabilities that may arise out of the performance of the work under this Agreement by Contractor. The minimum Scope and Limits of insurance coverages that the Contractor is to maintain in effect and to which the County shall be endorsed as an additional insured, shall be: General Aggregate - \$1,000,000; Products/Completed Operation Aggregate - \$1,000,000; Each Occurrence Limit - \$1,000,000; Personal Advertising Injury - \$1,000,000; Automobile Liability (if applicable) Bodily Injury/Property Damage - \$350,000 (each person)/\$1,000,000 (each occurrence); Workers' Compensation and Employers' Liability – Coverage A (Workers' Compensation) – statutory; Coverage B (Employers' Liability) - \$100,000/\$500,000, or such higher coverage limits as the Contractor's insurance coverage provides. Contractor shall provide a copy of their valid professional license/certification and professional liability insurance coverage prior to commencing the Services under this Agreement and during the term of this Agreement shall provide the County written evidence of continuing insurance coverage within three (3) business days upon request from the County. Certificates of insurance shall name San Miguel County as an additional insured. The County shall also be endorsed as a party on said policy and, if requested by the County, Contractor shall provide proof of the endorsement to the insurance policy for this Agreement

9. **GOVERNMENTAL IMMUNITY.** The County does not intend to waive, by any provision of this Agreement, any rights, immunities, and protections provided by the Colorado Governmental Immunity Act, C.R.S. §24-10-101, *et seq*, as currently in effect and as it may be subsequently amended. This indemnity continues beyond the termination of this Agreement for the acts or omissions which occurred during the Agreement Term.
10. **INDEMNIFICATION.** Contractor shall indemnify, release, save, hold harmless and defend San Miguel County, its officials, employees and agents from and against all liabilities, claims, actions, damages, losses, and expenses, including without limitation reasonable attorneys' fee and costs (hereinafter referred to collectively as "claims") for bodily injury or personal injury, including death, or loss or damage to tangible or intangible property caused, or alleged to be caused, in whole or in part, by the negligent or willful acts or omissions of the Contractor or any of its owners, officers, directors, agents, employees, or subcontractors. The indemnity includes any claim or amount arising out of or recovered under the Workers' Compensation Law or arising out of the failure of such Contractor to conform to any federal, state, or local law, statute, ordinance, rule, regulation or court decree. It is the specific intention of the parties that the County shall, in all instances, except for claims arising solely from the negligent or willful acts or omissions of the County, be indemnified by Contractor from and against any and all claims. It is agreed that Contractor will be responsible for primary loss investigation, defense, and judgment costs where this indemnification is applicable. In consideration of the award of this Agreement, the Contractor agrees to waive all rights of subrogation against the County, its officials, agents, and employees for losses arising from the work performed by the Contractor for the County according to this Agreement. Notwithstanding any other provision of the Contract Documents, Contractor acknowledges that the County, as a governmental entity, is not legally permitted to and does not agree to indemnify Contractor.
11. **APPROPRIATION OF FUNDS.** Time is of the essence in Contractor's performance of its obligations under this Agreement. San Miguel County's expenditure of any funds under this Agreement beyond the current County fiscal year shall be expressly subject to and contingent upon the County's budgeting and appropriating funds for such purposes according to the Colorado Local Government Budget Law and C.R.S. §29-1-110. Should such funds not be budgeted and appropriated for the County's obligations under this Agreement for future fiscal years, this Agreement shall terminate at the end of the fiscal year for which such funding has been lawfully budgeted and appropriated, and the County shall provide the contractor with prior written notice of such termination.
12. **SUSPENSION & TERMINATION.** Without terminating this Agreement, the County may suspend Contractor's Services following a five (5) day written Notice to Contractor. In the event of suspension, Contractor shall incur no additional expenses and shall perform no further services for the County under this Agreement after the date of receipt of the notice of suspension unless otherwise specified by the County. If resumption of Contractor's

Services requires any waiver or change in this Agreement, the parties must mutually agree to such waiver or change, in writing, and the writing must be attached as an addendum to this Agreement. Additionally, the County reserves the right to terminate this Agreement, in whole or in part, with or without cause by the giving of a fifteen (15) day written Notice to Contractor. In the event of termination, Contractor shall incur no additional expenses and shall perform no further services for the County under this Agreement after the date of receipt of the notice of termination, unless otherwise specified by the County. Upon termination for any reason, the County shall be entitled to a prorated refund for the remainder of the current term. In the event the County terminates this Agreement for cause, the provisions of the paragraph titled "Damages" shall apply.

13. **DAMAGES.** If Contractor fails to comply with any material provision of the Agreement, Contractor shall be liable for any and all damages, including with limitation, the cost of procuring similar supplies or services and all other costs and expenses incurred by the County because of such failure. All time limits stated in the Agreement are of the essence. Contractor's failure to substantially complete the services in conformance with the Agreement shall result in damages suffered by the County, including, without limitation, the County's cost to complete the services together with any other expenses incurred, as determined by the County. The County may offset any amounts owed to it as damages against any monies due and owing to Contractor under this Agreement. In addition, the County shall be entitled to any other rights and remedies available to it in law or equity.
14. **DATA SECURITY.** Any data or documentation Contractor receives from the County under this Agreement is the property of the County and shall be returned at the expiration of the Agreement. The data and documentation may contain confidential information and/or personal identifying information. As such, Contractor shall use reasonable care to ensure said information is secure.

Contractor will take adequate steps and security precautions to prevent unauthorized disclosure of information which is County property including, but not limited to: (a) instructing employees that have access to such information not to copy or duplicate the same or any part thereof; (b) to withhold disclosure or access or reference thereto from unauthorized third parties, and; (c) maintaining proper control of passwords and security procedures to prevent unauthorized access to Contractor's computer systems.

Contractor shall notify the County of any actual or suspected data security incident as soon as practicable, but no later than 24 hours after it becomes aware of it, to include but not limited to: (a) access, use or disclosure of a County's confidential information not permitted by this Agreement; (b) breach of a County's unsecured confidential information; (c) security breach or intrusion or; (d) use or disclosure of a County's confidential information in violation of any applicable federal or state laws or regulations.

If applicable, all data shall be encrypted at rest and in transmission. Contractor's collection, access, use, storage, disposal, and disclosure of data under this Agreement shall comply with all applicable data protection laws, as well as all other applicable regulations and directives.

Upon termination of this Agreement for any reason, Contractor will provide access to all County data for a transition period for up to three (3) months. Once all of the data has been moved and the three (3) month period has expired, Contractor's obligations to maintain the stored data will end. County will also have access to search, playback, and download features. County data will include all associated metadata. Contractor will provide assistance to move County data in a timely and organized manner to another provider at no additional cost during the transition period.

15. **NONDISCRIMINATION.** Contractor agrees to comply with the letter and spirit of the Colorado Anti-Discrimination Act, C.R.S. §24-34-401, et seq., as amended and all applicable local, state, and federal laws regarding discrimination and unfair employment practices. Contractor shall not refuse to hire, discharge, promote or demote, or discriminate in matters of compensation against any person otherwise qualified solely because of race, color, creed, religion, gender, gender identity, national origin or ancestry, disability, age, sex, sexual orientation, socio-economic status, marital status, veteran status, or any other basis prohibited by federal, state or local law.

16. **COLORADO LABOR PREFERENCE.** The provisions of C.R.S. sections 8-17-101 and 102 may apply to this Agreement. If this Agreement includes federal funds, this paragraph does not apply. If the work to be performed under this Agreement falls within the definition of “public works project,” then the Colorado Labor Preference applies. Colorado labor must be employed to perform the work to the extent of not less than eighty percent (80%) of each type or class of labor in the several classifications of skilled and common labor employed on the project. “Colorado labor” means any person who is a resident of the State of Colorado at the time of the public works project, without discrimination as to race, color, creed, sex, age or religion except when sex or age is a bona fide occupation qualification. A resident of the State of Colorado is a person who can provide a valid Colorado driver’s license, a valid Colorado state-issued photo identification or documentation that they have resided in Colorado for the last thirty (30) days.

17. **COMPLIANCE WITH PUBLIC CONTRACTS FOR SERVICES REQUIREMENTS - UNDOCUMENTED WORKERS.**

Contractor certifies that, at the time of the certification, and before its execution of this Agreement, that it does not knowingly employ or contract with an illegal alien who will perform work under this Agreement or enter into a contract with a subcontractor that fails to certify to the Contractor that the subcontractor shall not knowingly employ or contract with an illegal alien to perform work under this Contract. Contractor represents, warrants, and agrees that it: (a) has confirmed or attempted to confirm the employment eligibility of all employees who are newly hired for employment in the United States through participation in the e-verify program or through the Colorado Department of Labor and Employment (“CDLE”) and; (b) otherwise will comply with the requirements of C.R.S. §8-17.5-101(2)(b). Contractor is prohibited from using either the e-verify program or CDLE program procedures to undertake pre-employment screening of job applications while Services are being performed under this Agreement. If Contractor obtains actual knowledge that a subcontractor performing work under this Agreement knowingly employs or contracts with an illegal alien, Contractor shall notify the subcontractor and San Miguel County within three days that Contractor has actual knowledge that the subcontractor is employing or contracting with an illegal alien and terminate the subcontract with the subcontractor if within three (3) days of receiving the notice the subcontractor does not stop employing or contracting with the illegal alien; except that Contractor shall not terminate the contract with the subcontractor if during such 3 days the subcontractor provides information to establish that the subcontractor has not knowingly employed or contracted with an illegal alien. Contractor shall comply with any reasonable request CDLE made in the course of an investigation that CDLE is undertaking according to the authority established in C.R.S. §8-17.5-102. If Contractor fails to comply with any requirement of this provision or C.R.S. §8-17.5-101 et seq., the County may terminate this Agreement for a breach and Contractor shall be liable for actual and consequential damages to the County.

If Contractor is a natural person over eighteen years of age and a sole-proprietor, a condition precedent to the County’s execution of this Agreement is that the County has verified that contractor is lawfully present in the United States in accordance with H.B. 06 -1023, C.R.S., Title 24, Article 76.5, Restrictions on Public Benefits and that the contractor has executed the statutorily required affidavit regarding their lawful presence in the United States. Contractor shall provide a copy of their valid legal presence affidavit before commencing the Services under this Agreement.

18. **COLORADO OPEN RECORDS ACT.** The parties acknowledge that San Miguel County is a governmental entity formed according to Colorado law, and as such, is subject to the Colorado Open Records Act, C.R.S. § 24-72-200 et seq. (“CORA”). In the event the County receives a request under CORA that would require production of records related to Contractor, the County will inform Contractor of such request and provide Contractor with a copy of any such written request. Contractor shall promptly notify the County if: (a) production of the requested record would disclose Contractor’s trade secrets, privileged information, and/or confidential commercial or financial data pursuant to C.R.S. § 24-72-204(3)a(IV) or; (b) Contractor desires to pursue a legal action to prevent disclosure of such documents. The County shall determine whether to deny the request. If the County’s denial of a request is challenged, the County will notify Contractor of such challenge and provide the Company with a written copy of any such challenge. Contractor shall indemnify and hold the County harmless from any claim or

judgment as well as any costs and attorney's fees incurred in denying such request or otherwise assisting Contractor in response to a denial and/or legal challenge to the denial.

19. **GOVERNING LAW, JURISDICTION & VENUE.** This Agreement will be governed by and construed in accordance with the laws of Colorado. Should there be a dispute between the parties, jurisdiction and venue shall lie in the 7th Judicial District of San Miguel County, Colorado.
20. **WARRANTY.** Contractor represents that the Services pursuant to the Contract Documents will be performed in accordance with industry standards in all material respects.
21. **NOTICE.** Notice under this Agreement shall be given in writing and shall be deemed received if given by: (a) confirmed electronic transmission (as defined below) when transmitted, if transmitted on a business day and during the normal business hours of the recipient, and otherwise on the next business day following transmission; (b) certified mail, return receipt requested, postage prepaid, three (3) business days after being deposited in the United States mail; or (c) overnight carrier service or personal delivery when received. Notice shall be given to the parties at the following addresses:

San Miguel County Representative:

Name Ryan Righetti
Title: Road Superintendent
Mailing Address PO Box 426
Phone: (970) 327-4835
Email: ryanr@sanmiguelcountyco.gov

Contractor Representative:

Name: Daniel Eckstine
Title: Steincrusher LLC
Mailing Address: 5083 Hwy 348, Delta CO 81424
Phone (970) 250-2910
Email: steincrsheer2017@gmail.com

Copy to: San Miguel County Attorney

Attn.: Amy Markwell
PO Box 1170 (mailing)
333 W. Colorado Ave. (physical)
Telluride, CO 81435
970-728-3879
attorney@sanmiguelcountyco.gov

"Electronic Transmission" means any form of communication not directly involving the physical transmission of paper that creates a record that may be retained, retrieved, and reviewed by a recipient thereof, and that may be directly reproduced in paper form by such a recipient through an automated process, but specifically excluding facsimile transmissions and texts. The parties agree that: (a) any notice or communication transmitted by electronic transmission shall be treated in all manner and respects as an original written document; (b) any such notice or communication shall be considered to have the same binding and legal effect as an original document, and; (c) at the request of either party, any such notice or communication shall be re-delivered or re-executed, as appropriate, by the party in its original form.

22. **MISCELLANEOUS.**

- a) Assignability. Contractor shall not assign its rights or delegate its obligations under this Agreement without the County's prior written consent.
- b) Severability. Should a court of competent jurisdiction determine that any provision or term of this Agreement be legally void or otherwise legally unenforceable, such provision or term shall be deemed severable from the remainder of this Agreement, which shall remain in full force and effect.
- c) Officials Not to Benefit. No elected or employed member of the County government shall be paid or receive, directly or indirectly, any share or part of this Agreement or any benefit that may arise therefrom.

d) Conflict of Interest. Contractor shall not knowingly perform any act that would conflict in any manner with the performance of services under this Agreement. Contractor certifies that it is not engaged in any current project or business transaction, directly or indirectly, nor has any interest, direct or indirect, with any person or business that might result in a conflict of interest in the performance of services.

e) Records Retention. Contractor shall maintain all records, including working papers, notes, and financial records, and make them available for County inspection and audit which they may require for any purpose authorized by law.

f) Entire Agreement. This Agreement, together with any attached exhibits, represents the complete, integrated, and merged understanding of the parties with regard to the subject matter of this Agreement, and any prior or contemporaneous provision, term, condition, promise, representation, or understanding, shall be of no legal force or effect unless embodied herein in writing, or in a written amendment to this Agreement mutually agreed to and executed by the parties. A party's waiver of a specific right set forth herein shall not be deemed to be a waiver by that party of any other of its rights contained in this Agreement. In the event of a conflict between an Exhibit to this Agreement and the body of this Agreement, the Agreement will govern resolution of the conflict.

g) Execution by Counterparts; Electronic Signatures. This Agreement may be executed in two or more counterparts, each of which shall be deemed an original, but all of which shall constitute one and the same instrument. The parties approve the use of electronic signatures for execution of this Agreement. All use of electronic signatures shall be governed by the Uniform Electronic Transactions Act, C.R.S. §24-71.3-101 et seq.

IN WITNESS WHEREOF, the parties have executed and entered into this Agreement as of the latter day and year indicated below.

San Miguel County, Colorado

Date signed _____

By _____

Name: **Ryan Righetti**

Title: **Road Superintendent**

Contractor Name: Steincrusher LLC

Date signed _____

By _____

Name: **Daniel Eckstine**

Title: **Contractor**

Reviewed by the County Attorney for form and content.

Amy T. Markwell

Date

EXHIBIT “A”



ROAD & BRIDGE DEPARTMENT

RYAN RIGHIETTI, ROAD SUPERINTENDENT

INVITATION TO BID

San Miguel County will receive sealed bids at the Road & Bridge Office, in the Glockson Building, 1120 Summit St, PO Box 426, Norwood, CO 81423 until 9:00 a.m. on Friday, January 29, 2021, at which time all bids will be publicly opened and read aloud for the 2021 crushed gravel requirements of San Miguel County. In an effort to comply with the recent restrictions regarding the Coronavirus epidemic, travel between communities is not recommended and distancing between individuals is strongly encouraged. For this reason, Road & Bridge is making available a secure email link that will not be opened until the official bid opening. Please review and ensure your bid is complete as we will not be reviewing or opening this account until the deadline posted. We ask that bids be submitted using this link. We will still accept sealed bids mailed or delivered to our office. We will set up a conference call for those who would like to listen in on the live opening and reading of the received bids. The number to call in is 1-862-799-9015. Thank you all for your patience and please feel free to call with any questions or concerns regarding the process. The secure email address for bidding is (roadandbridgesealedbid@sanmiguelcountyco.gov)

No bid shall be withdrawn after the opening of bids without the consent of the Board of County Commissioners for a period of 30 days after the scheduled time of opening bids.

Bid Packages may be obtained by calling (970) 327-4835, emailing phylliss@sanmiguelcountyco.gov or visit San Miguel County's Website (www.sanmiguelcountyco.gov)

All bids must be submitted on the form provided and signed by the bidder, or his duly authorized agent and all bids **must include proof of (MSHA) registration and training according to CFR Part 46 of the Mine Safety Health Administration regulations and proof that an Air Pollution Permit has been obtained from the Colorado Department of Public Health & Environment.**

The Board of County Commissioners reserves the right to reject any or all bids, and waive any, or all, irregularities.


Ryan Righetti, Director

Publishing instructions and distribution:

Norwood Post – Please publish on January 6 & 13, 2021 (total 2 ads)

Telluride Daily Planet – Please publish on January 8 & 15, 2021 (total 2 ads)

Montrose Daily Press – Please publish on January 8 & 15, 2021 (total 2 ads)

San Miguel County's website – www.sanmiguelcountyco.gov

3B Enterprises
ARY Corp
Anson Excavating
Black Canyon Aggregates
C & J Gravel Products, Inc.
Colorado Crushing

Crowley Construction
Dillon Construction
Elk Creek Sand & Gravel
J E Sutherland Construction
Mountain View Enterprises
Overlook Mine

Rocky Mountain Aggregates
Steincrusher LLC
Stone Sand & Gravel
Western Gravel Constructors
Williams Construction

EXHIBIT “B”

**SAN MIGUEL COUNTY ROAD DEPARTMENT
2021 GRADATION SPECIFICATIONS**

Base Course – CDOT Class 6	
Passing $\frac{3}{4}$" Sieve	100%
Passing #4 Sieve	30-65%
Passing #8 Sieve	25-55%
Passing #200 Sieve	3-12%

Base Course – CDOT Class 2	
Passing 4" Screen	100%
Passing 3" Screen	95-100%

EXHIBIT “C”



9:00 A.M.

CONTRACTOR'S PROPOSAL
2021 CRUSHED GRAVEL REQUIREMENTS BID FORM

San Miguel County Road Department
PO Box 426
Norwood, CO 81423

Gentlemen:

The undersigned, having familiarized himself/themselves with the local conditions and specifications affecting the cost of work, hereby proposes to furnish all the labor (including equipment to push or haul raw material to the crushing area from the extraction site), materials, necessary tools, expendable equipment and all utility and transportation services necessary to perform and furnish all of the following material for San Miguel County, all in accordance with the specifications, for the sums set forth in the following Bidding Schedule.

Bidding Schedule						
Year	Unit	Description	Location	Quantity	Unit Cost	Total Cost
2021	1	CDOT Class 6 Road Base	Pathfinder Pit	12,000 cy	6.30	75,600
2021	2	CDOT Class 2 Road Base	Pathfinder Pit	3,000 cy	6.30	18,900
2021	3	CDOT Class 6 Road Base	Klondike Pit	12,000 cy	6.30	75,600
2021	4	CDOT Class 2 Road Base	Klondike Pit	3,000 cy	6.30	18,900
2022	5	CDOT Class 6 Road Base	Norwood Pit	10,000 cy	6.30	63,000
2022	6	CDOT Class 6 Road Base	Zadra Pit	5,000 cy	8.10	40,500
Total of Bid						292,500

If awarded this contract, the undersigned agrees to complete the work in accordance with the attached Gradation Specifications and also according to the following schedule. San Miguel County reserves the right to reasonably adjust the schedule as necessary to accommodate the County work plans.

The successful bidder must comply with the Pathfinder Pit hours of operation, from 7:00 am to 6:00 pm, including no activity on weekends or holidays. Crushing cannot begin until May 1st at the Klondike Pit.

The successful bidder agrees to extract material in accordance with San Miguel County's approved mining plan at each location, and to comply with Mine Safety & Health Administration (MSHA) Regulations 30 CFR Part 46.

Quantities or line items may be adjusted, added or removed depending on Unit Cost provided by bidder. San Miguel County will require the successful bidder to enter into the attached Agreement for Services.

In submitting this bid, it is understood that the right is reserved by the County to reject any and all bids.

Steincrusher LLC
Name of Firm


Signature

5083 Hwy 348
Address

970-250-2910
Telephone

Delta, CO. 81416
City, State & Zip Code

Jan 25, 2021
Date

Steincrusher2017@gmail.com
Email Address

U.S. Department of Labor

Mine Safety and Health Administration
Educational Field and Small Mine Services
1301 Airport Road
Beaver, West Virginia 25813-9426
Telephone: (304) 256-3223
Fax Number: (304) 256-3319



EDUCATIONAL FIELD and SMALL MINE SERVICES

November 2, 2020

Mr. Daniel Eckstine
Steincrusher LLC
5083 Hwy 348
Delta, CO 81416

Re: Part 46 Training Plan
Mine ID 05-04546

Dear Mr. Eckstine:

Thank you for the Part 46 training plan you submitted to this office. We have reviewed your plan, and it satisfies the requirements outlined in 30 CFR Part 46.

Future revisions to this plan will be considered approved as long as they meet the requirements of Part 46, or they may be submitted to this office for approval.

If you have any further questions, or need additional assistance implementing your plan, please call the Educational Field and Small Mine Services office at (202) 693-9570.

Sincerely,

John Poe for Kevin Deel

Kevin Deel
Manager
Educational Field and Small Mine Services
Enclosure

EXHIBIT “D”



COLORADO

Air Pollution Control Division

Department of Public Health & Environment

CONSTRUCTION PERMIT

Permit number: **18PO0126**

Issuance: **1**

Date issued: April 4, 2018

Issued to: **Stein Crusher LLC**

Facility Name: SteinCrusher #1
Plant AIRS ID: 777/4368/001
Physical Location: Homebased at 3001 North Townsend Avenue, Montrose
County: Montrose
General Description: Portable rock/stone processing facility

Equipment or activity subject to this permit:

Facility Equipment ID	AIRS Point	Description
Unit #6 Screen Deck	001	Portable Aggregate Screen Make: Cedarapids, Model: 6x20 Screen Deck, Serial: #34K0487 Design rated at 150 tons per hour Controlled with water spray bars

THIS PERMIT IS GRANTED SUBJECT TO ALL RULES AND REGULATIONS OF THE COLORADO AIR QUALITY CONTROL COMMISSION AND THE COLORADO AIR POLLUTION PREVENTION AND CONTROL ACT C.R.S. (25-7-101 et seq), TO THOSE GENERAL TERMS AND CONDITIONS INCLUDED IN THIS DOCUMENT AND THE FOLLOWING SPECIFIC TERMS AND CONDITIONS:

REQUIREMENTS TO SELF-CERTIFY FOR FINAL APPROVAL

1. Point 001: YOU MUST notify the Air Pollution Control Division (Division) no later than fifteen days after commencement of operation under this permit by submitting a Notice of Startup (NOS) form to the Division. The Notice of Startup (NOS) form may be downloaded online at <https://www.colorado.gov/pacific/cdphe/other-air-permitting-notice>. Failure to notify the Division of startup of the permitted source is a violation of AQCC Regulation Number 3, Part B, III.G.1 and can result in the revocation of the permit.
2. Within one hundred and eighty days (180) after issuance of this permit compliance with the conditions contained on this permit must be demonstrated to the Division. It is the permittee's responsibility to self certify compliance with the conditions. Failure to demonstrate compliance within 180 days may result in revocation of the permit or enforcement action by the Division.



COLORADO

Air Pollution Control Division

Information on how to certify compliance was mailed with the permit or can be obtained from the Division's website at <https://www.colorado.gov/pacific/cdphe/air-permit-self-certification>. (Reference: Regulation Number 3, Part B, III.G.2).

3. This permit will expire if the owner or operator of the source for which this permit was issued: (i) does not commence construction/modification or operation of this source within 18 months after either, the date of issuance of this construction permit or the date on which such construction or activity was scheduled to commence as set forth in the permit application associated with this permit; (ii) discontinues construction for a period of eighteen months or more; (iii) does not complete construction within a reasonable time of the estimated completion date. The Division may grant extensions of the deadline per Regulation Number 3, Part B, III.F.4.b. (Reference: Regulation Number 3, Part B, III.F.4.)
4. Within one hundred and eighty days (180) after issuance of this permit the operator must complete all initial compliance testing and sampling as required in this permit and submit the results to the Division as part of the self-certification process. (Reference: Regulation Number 3, Part B, III.G.2.)
5. Within thirty (30) days after issuance of this permit the permit number must be marked on the subject equipment for ease of identification. (Reference: Regulation Number 3, Part B, III.E.) (State only enforceable)

EMISSION LIMITATIONS AND RECORDS

6. Emissions of air pollutants must not exceed the following limitations. Annual records of the actual emission rates must be maintained by the applicant and made available to the Division for inspection upon request. (Reference: Regulation Number 3, Part B, II.A.4.)

Annual Limits:

Facility Equipment ID	AIRS Point	Tons per Year							Emission Type
		PM	PM ₁₀	PM _{2.5}	NO _x	SO ₂	VOC	CO	
Unit #6 Screen Deck	001	0.3	-	-	-	-	-	-	Point

See "Notes to Permit Holder" for information on emission factors and methods used to calculate limits.

PROCESS LIMITATIONS AND RECORDS

7. This source must be limited to the following maximum consumption, processing and/or operational rates as listed below. Annual records of the actual process rate must be maintained by the applicant and made available to the Division for inspection upon request. (Reference: Regulation Number 3, Part B, II.A.4)

Process/Consumption Limits

Facility Equipment ID	AIRS Point	Process Parameter	Annual Limit
Unit #6 Screen Deck	001	Throughput of screened material	250,000 tons/yr

STATE AND FEDERAL REGULATORY REQUIREMENTS

8. Visible emissions must not exceed twenty percent (20%) opacity during normal operation of the source. During periods of startup, process modification, or adjustment of control equipment visible emissions must not exceed 30% opacity for more than six minutes in any sixty consecutive minutes. Opacity must be determined using EPA Method 9. (Reference: Regulation Number 1, II.A.1. & 4.)
9. The owner or operator must use the equipment listed in the table below to control particulate matter emissions as needed to meet the applicable opacity limits if material moisture content alone is insufficient. The emission control devices must be inspected, monitored, maintained / renewed, and operated as per the manufacturers' recommendations, or maintained in accordance with good air pollution control practices to ensure the satisfactory performance of the devices. (Reference: Regulation Number 3, Part B, III.E.)

Facility Equipment ID	AIRS Point	Control Device	Controlled Pollutants
Unit #6 Screen Deck	001	Spray bars	PM, PM ₁₀ , PM _{2.5}

10. This source will be subject to the New Source Performance Standards requirements of Regulation number 6, Subpart 000 *whenever* there is primary crushing capacity greater than 150 tons per hour (portable equipment) or 25 tons per hour (fixed equipment) at this location as follows:

[The requirements below reflect the rule language of 40 CFR Part 60 Subpart 000 published in the Federal Register on 4/28/2009. However, if revisions to this Subpart are published at a later date, the owner or operator is subject to the requirements contained in the revised version of 40 CFR Part 60, Subpart 000.]

- a. Visible emissions from each screen and transfer point shall not exceed seven percent (7%) opacity.

In addition, the following requirements of Regulation Number 6, Part A, Subpart A, General Provisions, apply.

- b. At all times, including periods of start-up, shutdown, and malfunction, the facility and control equipment shall, to the extent practicable, be maintained and operated in a manner consistent with good air pollution control practices for minimizing emissions. Determination of whether or not acceptable operating and maintenance procedures are being used will be based on information available to the Division, which may include, but is not limited to, monitoring results, opacity observations, review of operating and maintenance procedures, and inspection of the source. (Reference: Regulation 6, Part A. General Provisions from 40CFR60.11)
- c. No article, machine, equipment or process shall be used to conceal an emission which would otherwise constitute a violation of an applicable standard. Such concealment includes, but is not limited to, the use of gaseous diluents to achieve compliance with an opacity standard or with a standard which is based on the concentration of a pollutant in the gases discharged to the atmosphere. (§ 60.12)
- d. Written notification of construction and initial startup dates shall be submitted to the Division as required under § 60.7.

- e. Records of startups, shutdowns, and malfunctions shall be maintained, as required under § 60.7.
- f. Written notification of opacity observation or monitor demonstrations shall be submitted to the Division as required under § 60.7.
- g. Compliance with opacity standards shall be demonstrated according to § 60.11.

REGULATORY REQUIREMENTS SPECIFIC TO PORTABLE SOURCES

11. When relocating this equipment the owner or operator must (Reference: Regulation Number 3, Part A, II.C.1.f and Part B, III.E.):
 - a. Submit a Relocation Notice each time this equipment is moved to a new location. The Relocation Notice must be received by the Division at least ten (10) days prior to the change in location.

The Relocation Notice must include a facility emission inventory that includes all emission units at the new location. An ambient air quality impact analysis for the site must be submitted with the Relocation Notice for this equipment if so requested by the Division.
 - b. Maintain records of compliance with all additional requirements that are triggered by the relocation. Such requirements may include, but are not limited to:
 - (1) State or Federal New Source Performance Standards (NSPS), National Emission Standards for Hazardous Air Pollutants (NESHAP), Maximum Achievable Control Technology (MACT), and Generally Available Control Technology (GACT) requirements; and
 - (2) Major source requirements, including Title V Operating Permit, Nonattainment Area New Source Review (NANSR) and Prevention of Significant Deterioration (PSD) program requirements; and
 - (3) Permitting requirements for sources no longer permit exempt due to the relocation of this unit to the site (i.e. previously Air Pollutant Emission Notice (APEN) required, permit exempt sources).
 - c. Keep a record of all relocation notices submitted to the Division.
12. This unit must not remain at any one site for more than two (2) years. Permittee must keep records of time spent at each site (Reference: Regulation Number 3, Part A, I.B.36.). If this unit remains at a site for two years then the permittee must submit a revised Air Pollutant Emission Notice (APEN) requesting a permit as a non-portable stationary source.
13. If this source relocates to a site causing the facility to become Title V Operating Permit major (see Regulation Number 3, Part A, I.B.25.) or relocates to an existing Title V Permitted source then this source is subject to the provisions of Regulation Number 3, Part C, Operating Permits (Title V of the 1990 Federal Clean Air Act Amendments). The application for the Operating Permit, or modification for inclusion in the existing Operating Permit, is due within one year of the date of commencement of operation at the site.

OPERATING & MAINTENANCE REQUIREMENTS



COLORADO
Air Pollution Control Division
1000 14th Street, Suite 1000, Denver, CO 80202

14. The owner or operator must follow good air pollution control practices for minimizing emissions. During operating months, the owner or operator must also conduct monthly inspections and maintenance of the water spray systems and maintain a record of inspection dates, findings, and any maintenance that is performed on that system. See **Attachment A** for an example recordkeeping format. This source is not required to submit an operating and maintenance plan for Division review and approval.

COMPLIANCE TESTING AND SAMPLING

Initial Testing Requirements

15. Within 180 days of startup, the owner or operator must demonstrate compliance with Conditions 8 and 10, using EPA Method 9 to measure opacity from the screen.

NSPS Subpart 000:

If the equipment included in this permit is located at a facility that has primary crushing capacity greater than 150 tons per hour (portable equipment) or 25 tons per hour (fixed equipment):

For screens and transfer points (except for the transfer to a stockpile) this measurement must consist of consecutive readings taken at fifteen second intervals over a 30 minute period (five 6-minute averages). Compliance with the applicable opacity limits must be based on the average of the five 6-minute averages (Reference: §60.675(c)(3)).

If the equipment included in this permit is NOT located at a facility that has primary crushing capacity greater than 150 tons per hour (portable equipment) or 25 tons per hour (fixed equipment):

For screens and transfer points this measurement must consist of a minimum twenty-four consecutive readings taken at fifteen second intervals over a six minute period. (Reference: Regulation Number 1, II.A.1 & 4)

ADDITIONAL REQUIREMENTS

16. The permit number must be marked on the subject equipment for ease of identification. (Reference: Regulation Number 3, Part B, III.E.) (State only enforceable)
17. A Revised Air Pollutant Emission Notice (APEN) must be filed: (Reference: Regulation Number 3, Part A, II.C.)
 - a. By April 30 of the year following a significant increase in emissions. A significant increase in emissions is defined as follows:

For any criteria pollutant:

For sources emitting **less than 100 tons per year**, a change in actual emissions of five tons per year or more, above the level reported on the last APEN submitted; or

For volatile organic compounds (VOC) and nitrogen oxide (NOx) sources in an ozone non-attainment area emitting **less than 100 tons of VOC or nitrogen oxide per year**, a change in actual emissions of one ton per year or more or five percent, whichever is greater, above the level reported on the last APEN submitted; or



For sources emitting **100 tons per year or more of a criteria pollutant**, a change in actual emissions of five percent or 50 tons per year or more, whichever is less, above the level reported on the last APEN submitted; or

For sources emitting **any amount of lead**, a change in actual emissions, above the level reported on the last APEN submitted, of fifty (50) pounds of lead

For any non-criteria reportable pollutant:

If the emissions increase by 50% or five (5) tons per year, whichever is less, above the level reported on the last APEN submitted to the Division.

- b. Whenever there is a change in the owner or operator of any facility, process, or activity; or
- c. Whenever new control equipment is installed, or whenever a different type of control equipment replaces an existing type of control equipment; or
- d. Whenever a permit limitation must be modified; or
- e. No later than 30 days before the existing APEN expires.

GENERAL TERMS AND CONDITIONS:

- 18. This permit and any attachments must be retained and made available for inspection upon request. The permit may be reissued to a new owner by the Division as provided in Regulation Number 3, Part B, II.B upon a request for transfer of ownership and the submittal of a revised APEN and the required fee.
- 19. If this permit specifically states that final approval has been granted, then the remainder of this condition is not applicable. Otherwise, the issuance of this construction permit is considered initial approval and does not provide "final" approval for this activity or operation of this source. Final approval of the permit must be secured from the APCD in writing in accordance with the provisions of 25-7-114.5(12)(a) C.R.S. and AQCC Regulation Number 3, Part B, III.G. Final approval cannot be granted until the operation or activity commences and has been verified by the APCD as conforming in all respects with the conditions of the permit. Once self-certification of all points has been reviewed and approved by the Division, it will provide written documentation of such final approval. **Details for obtaining final approval to operate are located in the Requirements to Self-Certify for Final Approval section of this permit.** The operator must retain the permit final approval letter issued by the Division after completion of self-certification with the most current construction permit.



20. This permit is issued in reliance upon the accuracy and completeness of information supplied by the applicant and is conditioned upon conduct of the activity, or construction, installation and operation of the source, in accordance with this information and with representations made by the applicant or applicant's agents. It is valid only for the equipment and operations or activity(ies) specifically identified in this permit. If subsequent operations or testing at the source indicate the information supplied to obtain this permit and relied upon in the creation and issuance of this permit is inaccurate, the source must submit an application to modify the permit to address the inaccuracy(ies). (Reference: Regulation Number 3, Part B III.E.)

By: Aaron Moseley
Aaron Moseley
Permit Engineer

Permit History

Issuance	Date	Description
Issuance #1	This Issuance	Initial Approval issued to Stein Crusher LLC.

Notes to Permit Holder (as of date of permit issuance):

- 1) The production or raw material processing limits and emission limits contained in this permit are based on the production/processing rates requested in the permit application. These limits may be revised upon request of the permittee providing there is no exceedence of any specific emission control regulation or any ambient air quality standard. A revised air pollutant emission notice (APEN) and application form must be submitted with a request for a permit revision. (Reference: Regulation Number 3, Part B II.A.4.)
- 2) This source is subject to the Common Provisions Regulation Part II, Subpart E, Affirmative Defense Provision for Excess Emissions During Malfunctions. The permittee must notify the Division of any malfunction condition which causes a violation of any emission limit or limits stated in this permit as soon as possible, but no later than noon of the next working day, followed by written notice to the Division addressing all of the criteria set forth in Part II.E.1. of the Common Provisions Regulation. See: <https://www.colorado.gov/pacific/cdphe/aqcc-regs>.
- 3) The emission levels contained in this permit are based on the following emission factors:

Point 001:
Screens:

Pollutant	Uncontrolled	Emission Factors (lbs/ton)	
		Controlled	Source
PM	0.025	0.0022	AP-42 Table 11.19.2-2
PM10	0.0087	0.00074	AP-42 Table 11.19.2-2
PM2.5	0.0013	0.00011	15% of PM10

- 4) In accordance with C.R.S. 25-7-114.1, each Air Pollutant Emission Notice (APEN) associated with this permit is valid for a term of five years from the date it was received by the Division. A revised APEN must be submitted no later than 30 days before the five-year term expires. Please refer to the most recent annual fee invoice to determine the APEN expiration date for

each emissions point associated with this permit. For any questions regarding a specific expiration date call the Division at (303)-692-3150.

- 5) This facility is classified as follows:

Applicable Requirement	Status
Operating Permit	Minor Source PM, PM ₁₀ , PM _{2.5}
PSD	Minor Source PM, PM ₁₀ , PM _{2.5}
NANSR	N/A

- 6) Full text of the Title 40, Protection of Environment Electronic Code of Federal Regulations can be found at the website listed below:

http://www.ecfr.gov/cgi-bin/text-idx?gp=&SID=2a3f8ebe8f5c2f47006ad49ae4b4c080&mc=true&tpl=/ecfrbrowse/Title40/40tab_02.tpl

Part 60: Standards of Performance for New Stationary Sources		
NSPS	60.670 - 60.676	Subpart 000

- 7) The permit holder is required to pay fees for the processing time for this permit. An invoice for these fees will be issued after the permit is issued. Failure to pay the invoice will result in revocation of this permit. The permit holder must pay the invoice within 30 days of receipt of the invoice (Reference: Regulation Number 3, Part A, VI.B.).
- 8) Unless specifically stated otherwise, the general and specific conditions contained in this permit have been determined by the Division to be necessary to assure compliance with the provisions of Section 25-7-114.5(7)(a), C.R.S.
- 9) Each and every condition of this permit is a material part hereof and is not severable. Any challenge to or appeal of a condition hereof must constitute a rejection of the entire permit and upon such occurrence, this permit must be deemed denied *ab initio*. This permit may be revoked at any time prior to self-certification and final authorization by the Division on grounds set forth in the Colorado Air Pollution Prevention and Control Act and regulations of the AQCC including failure to meet any express term or condition of the permit. If the Division denies a permit, conditions imposed upon a permit are contested by the applicant, or the Division revokes a permit, the applicant or owner or operator of a source may request a hearing before the AQCC for review of the Division's action. (Reference: Regulation Number 3, Part B III.F.)
- 10) Section 25-7-114.7(2)(a), C.R.S. requires that all sources required to file an Air Pollutant Emission Notice (APEN) must **pay an annual emission fee**. If a source or activity is to be discontinued, the owner must notify the Division in writing requesting a cancellation of the permit. Upon notification, annual fee billing will terminate.
- 11) Violation of the terms of a permit or of the provisions of the Colorado Air Pollution Prevention and Control Act or the regulations of the AQCC may result in administrative, civil or criminal enforcement actions under Sections 25-7-115 (enforcement), -121 (injunctions), -122 (civil penalties), -122.1 (criminal penalties), C.R.S.

Monthly Inspection & Maintenance Log for Dust Suppression Systems

[illegible]

COLORADO

PL 101-508, 101-509, 101-510, 101-511, 101-512, 101-513, 101-514, 101-515, 101-516, 101-517, 101-518, 101-519, 101-520, 101-521, 101-522, 101-523, 101-524, 101-525, 101-526, 101-527, 101-528, 101-529, 101-530, 101-531, 101-532, 101-533, 101-534, 101-535, 101-536, 101-537, 101-538, 101-539, 101-540, 101-541, 101-542, 101-543, 101-544, 101-545, 101-546, 101-547, 101-548, 101-549, 101-550, 101-551, 101-552, 101-553, 101-554, 101-555, 101-556, 101-557, 101-558, 101-559, 101-560, 101-561, 101-562, 101-563, 101-564, 101-565, 101-566, 101-567, 101-568, 101-569, 101-570, 101-571, 101-572, 101-573, 101-574, 101-575, 101-576, 101-577, 101-578, 101-579, 101-580, 101-581, 101-582, 101-583, 101-584, 101-585, 101-586, 101-587, 101-588, 101-589, 101-590, 101-591, 101-592, 101-593, 101-594, 101-595, 101-596, 101-597, 101-598, 101-599, 101-600, 101-601, 101-602, 101-603, 101-604, 101-605, 101-606, 101-607, 101-608, 101-609, 101-610, 101-611, 101-612, 101-613, 101-614, 101-615, 101-616, 101-617, 101-618, 101-619, 101-620, 101-621, 101-622, 101-623, 101-624, 101-625, 101-626, 101-627, 101-628, 101-629, 101-630, 101-631, 101-632, 101-633, 101-634, 101-635, 101-636, 101-637, 101-638, 101-639, 101-640, 101-641, 101-642, 101-643, 101-644, 101-645, 101-646, 101-647, 101-648, 101-649, 101-650, 101-651, 101-652, 101-653, 101-654, 101-655, 101-656, 101-657, 101-658, 101-659, 101-660, 101-661, 101-662, 101-663, 101-664, 101-665, 101-666, 101-667, 101-668, 101-669, 101-670, 101-671, 101-672, 101-673, 101-674, 101-675, 101-676, 101-677, 101-678, 101-679, 101-680, 101-681, 101-682, 101-683, 101-684, 101-685, 101-686, 101-687, 101-688, 101-689, 101-690, 101-691, 101-692, 101-693, 101-694, 101-695, 101-696, 101-697, 101-698, 101-699, 101-700, 101-701, 101-702, 101-703, 101-704, 101-705, 101-706, 101-707, 101-708, 101-709, 101-710, 101-711, 101-712, 101-713, 101-714, 101-715, 101-716, 101-717, 101-718, 101-719, 101-720, 101-721, 101-722, 101-723, 101-724, 101-725, 101-726, 101-727, 101-728, 101-729, 101-730, 101-731, 101-732, 101-733, 101-734, 101-735, 101-736, 101-737, 101-738, 101-739, 101-740, 101-741, 101-742, 101-743, 101-744, 101-745, 101-746, 101-747, 101-748, 101-749, 101-750, 101-751, 101-752, 101-753, 101-754, 101-755, 101-756, 101-757, 101-758, 101-759, 101-760, 101-761, 101-762, 101-763, 101-764, 101-765, 101-766, 101-767, 101-768, 101-769, 101-770, 101-771, 101-772, 101-773, 101-774, 101-775, 101-776, 101-777, 101-778, 101-779, 101-780, 101-781, 101-782, 101-783, 101-784, 101-785, 101-786, 101-787, 101-788, 101-789, 101-790, 101-791, 101-792, 101-793, 101-794, 101-795, 101-796, 101-797, 101-798, 101-799, 101-800, 101-801, 101-802, 101-803, 101-804, 101-805, 101-806, 101-807, 101-808, 101-809, 101-810, 101-811, 101-812, 101-813, 101-814, 101-815, 101-816, 101-817, 101-818, 101-819, 101-820, 101-821, 101-822, 101-823, 101-824, 101-825, 101-826, 101-827, 101-828, 101-829, 101-830, 101-831, 101-832, 101-833, 101-834, 101-835, 101-836, 101-837, 101-838, 101-839, 101-840, 101-841, 101-842, 101-843, 101-844, 101-845, 101-846, 101-847, 101-848, 101-849, 101-850, 101-851, 101-852, 101-853, 101-854, 101-855, 101-856, 101-857, 101-858, 101-859, 101-860, 101-861, 101-862, 101-863, 101-864, 101-865, 101-866, 101-867, 101-868, 101-869, 101-870, 101-871, 101-872, 101-873, 101-874, 101-875, 101-876, 101-877, 101-878, 101-879, 101-880, 101-881, 101-882, 101-883, 101-884, 101-885, 101-886, 101-887, 101-888, 101-889, 101-890, 101-891, 101-892, 101-893, 101-894, 101-895, 101-896, 101-897, 101-898, 101-899, 101-900, 101-901, 101-902, 101-903, 101-904, 101-905, 101-906, 101-907, 101-908, 101-909, 101-910, 101-911, 101-912, 101-913, 101-914, 101-915, 101-916, 101-917, 101-918, 101-919, 101-920, 101-921, 101-922, 101-923, 101-924, 101-925, 101-926, 101-927, 101-928, 101-929, 101-930, 101-931, 101-932, 101-933, 101-934, 101-935, 101-936, 101-937, 101-938, 101-939, 101-940, 101-941, 101-942, 101-943, 101-944, 101-945, 101-946, 101-947, 101-948, 101-949, 101-950, 101-951, 101-952, 101-953, 101-954, 101-955, 101-956, 101-957, 101-958, 101-959, 101-960, 101-961, 101-96

EXHIBIT “E”



STEIN-3

OP ID: SL

CERTIFICATE OF LIABILITY INSURANCE

DATE (MM/DD/YYYY)

03/02/2021

THIS CERTIFICATE IS ISSUED AS A MATTER OF INFORMATION ONLY AND CONFERS NO RIGHTS UPON THE CERTIFICATE HOLDER. THIS CERTIFICATE DOES NOT AFFIRMATIVELY OR NEGATIVELY AMEND, EXTEND OR ALTER THE COVERAGE AFFORDED BY THE POLICIES BELOW. THIS CERTIFICATE OF INSURANCE DOES NOT CONSTITUTE A CONTRACT BETWEEN THE ISSUING INSURER(S), AUTHORIZED REPRESENTATIVE OR PRODUCER, AND THE CERTIFICATE HOLDER.

IMPORTANT: If the certificate holder is an ADDITIONAL INSURED, the policy(ies) must have ADDITIONAL INSURED provisions or be endorsed. If SUBROGATION IS WAIVED, subject to the terms and conditions of the policy, certain policies may require an endorsement. A statement on this certificate does not confer rights to the certificate holder in lieu of such endorsement(s).

PRODUCER
Western Group Inc - Delta
254 Main
PO Box 79
Delta, CO 81416
Rodney Stevens

970-874-4455

CONTACT NAME: Rodney Stevens

PHONE (A/C, No, Ext): 970-874-4455

FAX (A/C, No): 970-874-0931

E-MAIL ADDRESS:

INSURER(S) AFFORDING COVERAGE

NAIC #

INSURER A: Liberty Mutual Insurance

23043

INSURER B: Pinnacol Assurance

41190

INSURER C:

INSURER D:

INSURER E:

INSURER F:

INSURED
Steincrusher LLC
Dan Eckstine
5083 Highway 348
Delta, CO 81416

COVERAGES

CERTIFICATE NUMBER:

REVISION NUMBER:

THIS IS TO CERTIFY THAT THE POLICIES OF INSURANCE LISTED BELOW HAVE BEEN ISSUED TO THE INSURED NAMED ABOVE FOR THE POLICY PERIOD INDICATED. NOTWITHSTANDING ANY REQUIREMENT, TERM OR CONDITION OF ANY CONTRACT OR OTHER DOCUMENT WITH RESPECT TO WHICH THIS CERTIFICATE MAY BE ISSUED OR MAY PERTAIN, THE INSURANCE AFFORDED BY THE POLICIES DESCRIBED HEREIN IS SUBJECT TO ALL THE TERMS, EXCLUSIONS AND CONDITIONS OF SUCH POLICIES. LIMITS SHOWN MAY HAVE BEEN REDUCED BY PAID CLAIMS.

INSR LTR	TYPE OF INSURANCE	ADDL SUBR INSD WVD	POLICY NUMBER	POLICY EFF (MM/DD/YYYY)	POLICY EXP (MM/DD/YYYY)	LIMITS
A	<input checked="" type="checkbox"/> COMMERCIAL GENERAL LIABILITY					
	CLAIMS-MADE <input checked="" type="checkbox"/> OCCUR		BKS62116036	10/01/2020	10/01/2021	EACH OCCURRENCE \$ 1,000,000
						DAMAGE TO RENTED PREMISES (Ea occurrence) \$ 300,000
						MED EXP (Any one person) \$ 15,000
						PERSONAL & ADV INJURY \$ 1,000,000
						GENERAL AGGREGATE \$ 2,000,000
						PRODUCTS - COMP/OP AGG \$ 2,000,000
	AUTOMOBILE LIABILITY					COMBINED SINGLE LIMIT (Ea accident) \$
	ANY AUTO OWNED AUTOS ONLY	SCHEDULED AUTOS				BODILY INJURY (Per person) \$
	HIRED AUTOS ONLY	NON-OWNED AUTOS ONLY				BODILY INJURY (Per accident) \$
						PROPERTY DAMAGE (Per accident) \$
	UMBRELLA LIAB	OCCUR				EACH OCCURRENCE \$
	EXCESS LIAB	CLAIMS-MADE				AGGREGATE \$
	DED	RETENTION \$				
B	WORKERS COMPENSATION AND EMPLOYERS' LIABILITY					PER STATUTE OTH-ER
	ANY PROPRIETOR/PARTNER/EXECUTIVE OFFICER/MEMBER EXCLUDED? (Mandatory in NH)	Y/N	4226124	09/17/2020	10/01/2021	E.L. EACH ACCIDENT \$ 100,000
	If yes, describe under DESCRIPTION OF OPERATIONS below	N/A				E.L. DISEASE - EA EMPLOYEE \$ 100,000
						E.L. DISEASE - POLICY LIMIT \$ 500,000

DESCRIPTION OF OPERATIONS / LOCATIONS / VEHICLES (ACORD 101, Additional Remarks Schedule, may be attached if more space is required)

STONE CRUSHING

CERTIFICATE HOLDER

CANCELLATION

San Miguel Road and Bridge
Department
P.O Box 426
Norwood, CO 81423

SHOULD ANY OF THE ABOVE DESCRIBED POLICIES BE CANCELLED BEFORE THE EXPIRATION DATE THEREOF, NOTICE WILL BE DELIVERED IN ACCORDANCE WITH THE POLICY PROVISIONS.

AUTHORIZED REPRESENTATIVE
Rodney Stevens

EXHIBIT “F”

September 16, 2020
Policy #: 4226124

ITEM 1. INSURED

Steincrusher LLC
5083 Highway 348
Delta, CO 81416-9442

Western Group, Inc - Delta
PO Box 79
Delta, CO 81416
(970) 874-4455

ITEM 2. POLICY PERIOD: FROM: 09/17/2020 TO 10/01/2021
12:01 A.M. MOUNTAIN STANDARD TIME

Legacy/4.00

ITEM 3. A. Workers' Compensation Insurance: Part One of the policy applies to the workers' compensation law of the states listed here:

COLORADO

B. Employers Liability Insurance: Part Two of the policy applies to work in each state listed in Item 3 A. The limits of our liability under part two are:

BODILY INJURY BY ACCIDENT	\$100,000	EACH ACCIDENT
BODILY INJURY BY DISEASE	\$100,000	EACH EMPLOYEE
BODILY INJURY BY DISEASE	\$500,000	POLICY LIMIT

C. Other States Insurance: Part Three of the policy applies to the states, if any, listed here:

NONE

(Please contact Pinnacol Assurance for information on coverage outside the state of Colorado)

D. This policy includes the attached endorsements and schedules:

337	Exclude From Coverage
414	Notification of Change in Ownership Endorsement
511	Other State Endorsement
CAT09	Catastrophe (Other than Certified Acts of Terrorism)
TRPRA	Terrorism Risk Insurance Program Reauthorization Act of 2015

ITEM 4. We will determine the premium for this policy by our manuals of rules, classifications, rates and rating plans. All information required below is subject to verification and change by audit. The statements of estimated advanced premium are also a part of this policy.



U.S. Department of Labor

Mine Safety and Health Administration
Educational Field and Small Mine Services
1301 Airport Road
Beaver, West Virginia 25813-9426
Telephone: (304) 256-3223
Fax Number: (304) 256-3319



EDUCATIONAL FIELD and SMALL MINE SERVICES

November 2, 2020

Mr. Daniel Eckstine
Steincrusher LLC
5083 Hwy 348
Delta, CO 81416

Re: Part 46 Training Plan
Mine ID 05-04546

Dear Mr. Eckstine:

Thank you for the Part 46 training plan you submitted to this office. We have reviewed your plan, and it satisfies the requirements outlined in 30 CFR Part 46.

Future revisions to this plan will be considered approved as long as they meet the requirements of Part 46, or they may be submitted to this office for approval.

If you have any further questions, or need additional assistance implementing your plan, please call the Educational Field and Small Mine Services office at (202) 693-9570.

Sincerely,

John Poe for Kevin Deel

Kevin Deel
Manager
Educational Field and Small Mine Services
Enclosure

EXHIBIT “G”

Request for Taxpayer Identification Number and Certification

► Go to www.irs.gov/FormW9 for instructions and the latest information.

Give Form to the
requester. Do not
send to the IRS.

Print or type.
See Specific Instructions on page 3.

1 Name (as shown on your income tax return). Name is required on this line; do not leave this line blank. Steinerasher LLC	
2 Business name/disregarded entity name, if different from above	
3 Check appropriate box for federal tax classification of the person whose name is entered on line 1. Check only one of the following seven boxes. <input type="checkbox"/> Individual/sole proprietor or single-member LLC <input type="checkbox"/> C Corporation <input type="checkbox"/> S Corporation <input type="checkbox"/> Partnership <input type="checkbox"/> Trust/estate <input checked="" type="checkbox"/> Limited liability company. Enter the tax classification (C=C corporation, S=S corporation, P=Partnership) ► C Note: Check the appropriate box in the line above for the tax classification of the single-member owner. Do not check LLC if the LLC is classified as a single-member LLC that is disregarded from the owner unless the owner of the LLC is another LLC that is not disregarded from the owner for U.S. federal tax purposes. Otherwise, a single-member LLC that is disregarded from the owner should check the appropriate box for the tax classification of its owner. <input type="checkbox"/> Other (see instructions) ►	
4 Exemptions (codes apply only to certain entities, not individuals; see instructions on page 3): Exempt payee code (if any) _____ Exemption from FATCA reporting code (if any) _____ <small>(Applies to accounts maintained outside the U.S.)</small>	
5 Address (number, street, and apt. or suite no.) See instructions. 5083 Hwy 348	Requester's name and address (optional)
6 City, state, and ZIP code Delta CO 81416	
7 List account number(s) here (optional)	

Part I Taxpayer Identification Number (TIN)

Enter your TIN in the appropriate box. The TIN provided must match the name given on line 1 to avoid backup withholding. For individuals, this is generally your social security number (SSN). However, for a resident alien, sole proprietor, or disregarded entity, see the instructions for Part I, later. For other entities, it is your employer identification number (EIN). If you do not have a number, see *How to get a TIN*, later.

Note: If the account is in more than one name, see the instructions for line 1. Also see *What Name and Number To Give the Requester* for guidelines on whose number to enter.

Social security number								
				-				
or								
Employer identification number								
4	6	-	2	6	2	2	0	3
6								6

Part II Certification

Under penalties of perjury, I certify that:

1. The number shown on this form is my correct taxpayer identification number (or I am waiting for a number to be issued to me); and
2. I am not subject to backup withholding because: (a) I am exempt from backup withholding, or (b) I have not been notified by the Internal Revenue Service (IRS) that I am subject to backup withholding as a result of a failure to report all interest or dividends, or (c) the IRS has notified me that I am no longer subject to backup withholding; and
3. I am a U.S. citizen or other U.S. person (defined below); and
4. The FATCA code(s) entered on this form (if any) indicating that I am exempt from FATCA reporting is correct.

Certification instructions. You must cross out item 2 above if you have been notified by the IRS that you are currently subject to backup withholding because you have failed to report all interest and dividends on your tax return. For real estate transactions, item 2 does not apply. For mortgage interest paid, acquisition or abandonment of secured property, cancellation of debt, contributions to an individual retirement arrangement (IRA), and generally, payments other than interest and dividends, you are not required to sign the certification, but you must provide your correct TIN. See the instructions for Part II, later.

Sign Here	Signature of U.S. person ► Judy Delmonico	Date ► March 3, 2021
-----------	--------------------------------------------------	-----------------------------

General Instructions

Section references are to the Internal Revenue Code unless otherwise noted.

Future developments. For the latest information about developments related to Form W-9 and its instructions, such as legislation enacted after they were published, go to www.irs.gov/FormW9.

Purpose of Form

An individual or entity (Form W-9 requester) who is required to file an information return with the IRS must obtain your correct taxpayer identification number (TIN) which may be your social security number (SSN), individual taxpayer identification number (ITIN), adoption taxpayer identification number (ATIN), or employer identification number (EIN), to report on an information return the amount paid to you, or other amount reportable on an information return. Examples of information returns include, but are not limited to, the following.

- Form 1099-INT (interest earned or paid)

- Form 1099-DIV (dividends, including those from stocks or mutual funds)
- Form 1099-MISC (various types of income, prizes, awards, or gross proceeds)
- Form 1099-B (stock or mutual fund sales and certain other transactions by brokers)
- Form 1099-S (proceeds from real estate transactions)
- Form 1099-K (merchant card and third party network transactions)
- Form 1098 (home mortgage interest), 1098-E (student loan interest), 1098-T (tuition)
- Form 1099-C (canceled debt)
- Form 1099-A (acquisition or abandonment of secured property)

Use Form W-9 only if you are a U.S. person (including a resident alien), to provide your correct TIN.

If you do not return Form W-9 to the requester with a TIN, you might be subject to backup withholding. See What is backup withholding, later.



AGENDA ITEM - 7.a.

TITLE:

12:45 pm Update on the fiscal impacts of COVID for San Miguel County.

Presented by: Mike Bordogna, County Manager and Ramona Rummel, Director of Finance

Time needed: 10 mins

PREPARED BY:

RECOMMENDED ACTION/MOTION:

INTRODUCTION/BACKGROUND:

FISCAL IMPACT:

Contract Number:	Date Executed	End Date	Department(s)
YYYY-###			Board of County Commissioner Staff
Description:			



AGENDA ITEM - 7.b.

TITLE:

1:00 pm Discussion and update with the San Miguel County Stakeholders concerning the COVID 19 outbreak.

Presented by: Grace Franklin, Public Health Director

Time needed: 75 mins

PREPARED BY:

RECOMMENDED ACTION/MOTION:

INTRODUCTION/BACKGROUND:

FISCAL IMPACT:

Contract Number:	Date Executed	End Date	Department(s)
YYYY-###			Board of County Commissioner Staff
Description:			



AGENDA ITEM - 7.c.

TITLE:

Potential Executive Session: Concerning Public Health, Meeting with an Attorney, citation (4)(b).

Presented by:

Time needed:

PREPARED BY:

RECOMMENDED ACTION/MOTION:

INTRODUCTION/BACKGROUND:

FISCAL IMPACT:

Contract Number:	Date Executed	End Date	Department(s)
YYYY-###			Board of County Commissioner Staff
Description:			